

PROPOSED TYPICAL SECTION



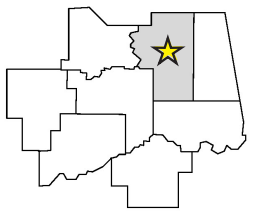
PROJECT INFORMATION SUMMARY

- Right-of-Way & Utility Relocation programmed to start in: **2021**
- Construction programmed to start in: **2023**
- Current Annual Average Daily Traffic (AADT) in year 2019: **5,712 Vehicles a day**
- Future Estimated AADT by year 2039: **7,956 Vehicles a day**
- Highway will remain open to traffic at all times during construction

*Totals DO NOT include Toll Roads

DIVISION 1 ENGINEER: CHRIS WALLACE, P.E.

Total Road Miles*: 1,109.50	Total Interstate Miles*: 97.27	Total Bridges: 706
Counties: Adair, Cherokee, Haskell, McIntosh, Muskogee, Okmulgee, Sequoyah, Wagoner		



PLEASE PROVIDE YOUR COMMENTS BY SEPTEMBER 3, 2019

For more information about the project

Tim Vermillion
NEPA Project Manager
ODOT - EPD
(405) 521-2676
tvermillion@odot.org

For more information about Public Participation

Jenny Droscher
Public Involvement Officer
ODOT - EPD
(405) 325-3269
jdroscher@odot.org



AUGUST 20, 2019
5:00 p.m. to 7:00 p.m.

Hulbert Community Public Library | 210 N. Broadway | Hulbert, OK, 74441

SH-51 • Cherokee County, OK • 30553(04)
Presentation of Proposed Improvements & Solicitation of Public Input

Purpose of Open House

The purpose of the Open House meeting is to inform the public of the proposed improvements, solicit input, and answer questions regarding construction activities, sequencing, and scheduling.

Project Background

The Oklahoma Department of Transportation (ODOT), in cooperation with the Federal Highway Administration (FHWA), proposes to make safety improvements to SH-51 from Hulbert, extending east approximately 8 miles to Tahlequah in Cherokee County, Oklahoma. This segment of SH-51 is a two-lane, open section, minor arterial facility with 12-foot wide driving lanes and 4-foot shoulders. Current traffic volumes are estimated at 5,712 vehicles per day (VPD) and are projected to increase to 7,956 VPD by 2039. This portion of SH-51 has steep slopes, a substandard horizontal curve, limited sight distances, poor pavement, and narrow shoulders. Due to safety concerns, ODOT proposes to lessen the slopes, upgrade the substandard curve, reconfigure driveways and entrances, improve driving surfaces, and widen the shoulders. The purpose of the proposed improvements is to correct roadway deficiencies, enhance safety, and efficiently accommodate traffic.

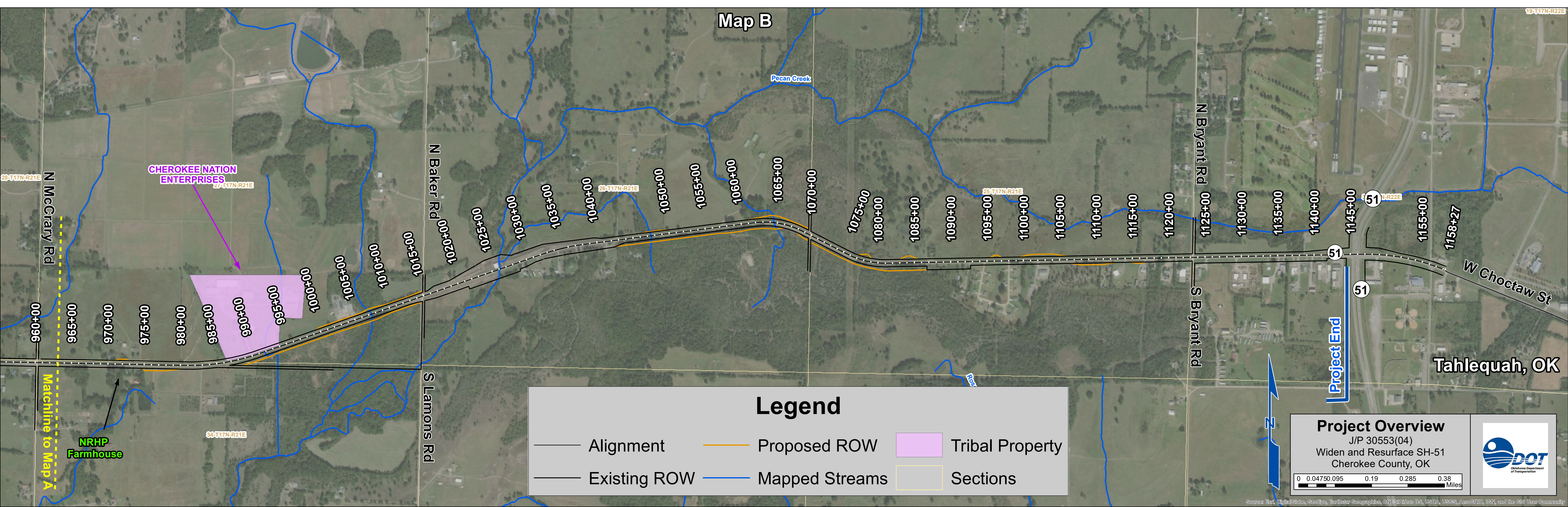
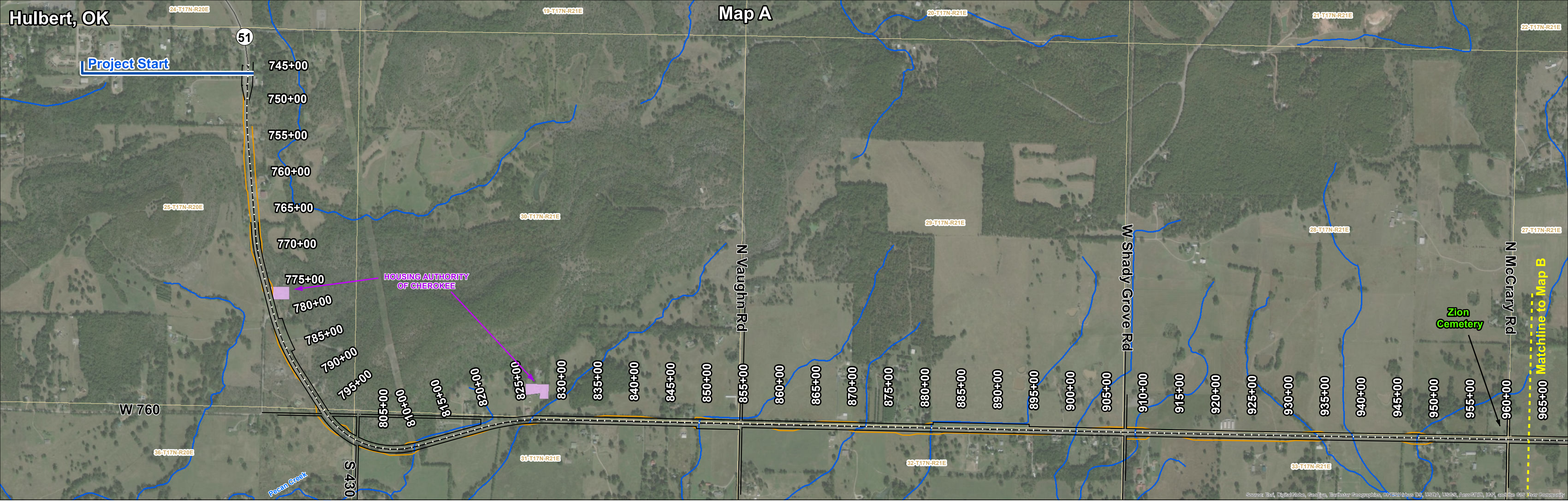
Project Description

ODOT is developing design plans for improving this segment of SH-51 while taking into consideration the cost of construction, right-of-way and utilities impacts, and environmental constraints. The proposed improvements include widening and resurfacing the highway to create two, 12-foot wide, paved driving lanes with 8-foot wide shoulders on existing alignment.

Highway access would remain open during construction, and access to residences would be maintained throughout the project duration.

<http://www.odot.org/publicmeetings>





Legend

- Alignment
- Existing ROW
- Proposed ROW
- Mapped Streams
- Tribal Property
- Sections

Project Overview

J/P 30553(04)
Widen and Resurface SH-51
Cherokee County, OK

Source: Esri, DigitalGlobe, GeoEye, Earthstar Geographics, CNES/Airbus DS, USDA, USGS, AeroGRID, IGN, and the GIS User Community