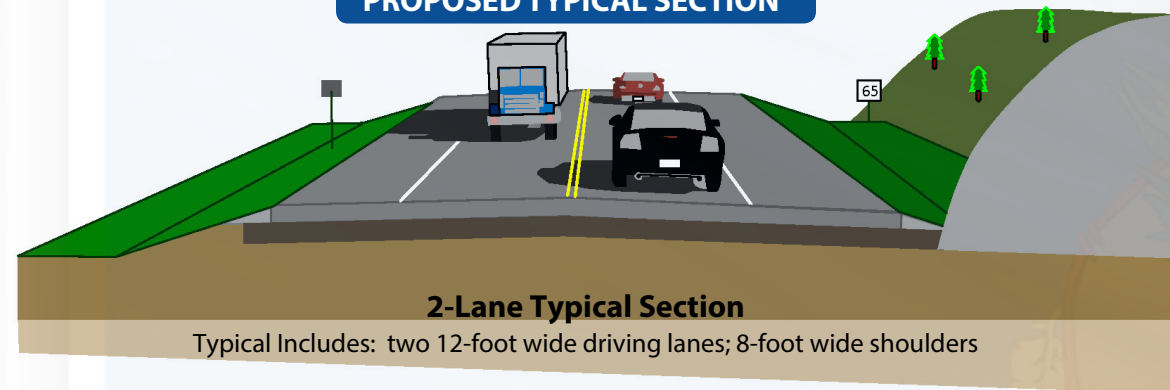


**PROPOSED TYPICAL SECTION**



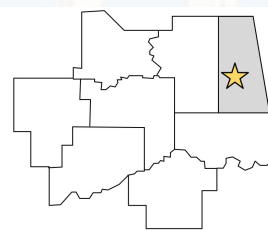
**PROJECT INFORMATION SUMMARY**

- Right-of-Way & Utility Relocation programmed to start in: **2021**
- Construction programmed to start in: **2023**
- Current Annual Average Daily Traffic (AADT) in year 2019: **3,500 Vehicles a day**
- Future Estimated AADT by year 2038: **5,000 Vehicles a day**
- Highway will remain open to traffic at all times during construction

\*Totals DO NOT include Toll Roads

**DIVISION 1 ENGINEER: CHRIS WALLACE, P.E.**

**Total Road Miles\*:** 1,109.50      **Total Interstate Miles\*:** 97.27      **Total Bridges:** 706  
**Counties:** Adair, Cherokee, Haskell, McIntosh, Muskogee, Okmulgee, Sequoyah, Wagoner



**PLEASE PROVIDE YOUR COMMENTS BY SEPTEMBER 12, 2019**

**For more information about the project**

**Tim Vermillion**  
 NEPA Project Manager  
 ODOT - EPD  
 (405) 521-2676

**For more information about Public Participation**

**Jenny Droscher**  
 Public Involvement Officer  
 ODOT - EPD  
 (405) 325-3269



**August 29, 2019**  
**5:00 p.m. - 7:00 p.m.**  
 Stilwell Public Library | 5 North 6th St. | Stilwell, OK 74960

**SH-100 • Adair County • 32098(04)**  
**Presentation of Proposed Improvements & Solicitation of Public Input**

**Purpose of Open House**

The purpose of the Open House meeting is to inform the public of the alternatives being considered for the proposed improvement, and to obtain input.

**Project Background**

The Oklahoma Department of Transportation (ODOT), in cooperation with the Federal Highway Administration (FHWA), is evaluating the need for improvements to State Highway (SH) SH-100 from 3.5 miles northeast of the Cherokee County line and extending east 5 miles in Adair County, Oklahoma. This segment of SH-100 is a two-lane, open section, major collector facility with 12-foot driving lanes and varying-width sod shoulders. The bridge over Smith Hollow Creek is a 45-foot long reinforced concrete box. Current traffic volumes are estimated at 3,500 vehicles per day (VPD) and are projected to increase to 5,000 VPD by 2038. This portion of SH-100 has substandard curves, limited sight distances, deteriorating pavement, and narrow or no shoulders. Due to safety concerns, ODOT proposes to upgrade substandard curves, reconfigure driveways and entrances, improve driving surfaces, widen or add shoulders, and lengthen the bridge-box over Smith Hollow Creek. The purpose of the proposed improvements is to correct roadway deficiencies, enhance safety, and efficiently accommodate traffic.

**Project Description**

ODOT is evaluating three alternatives for improving this segment of highway while taking into consideration the cost of construction, right-of-way and utilities, and potential environmental constraints. The alternatives include:

- Alternative 1: North offset alignment curve correction near CR NS-4675.
- Alternative 2: Minor curve correction on existing alignment near CR NS-4675.
- Alternative 3: Widen roadway on existing alignment with no curve correction.

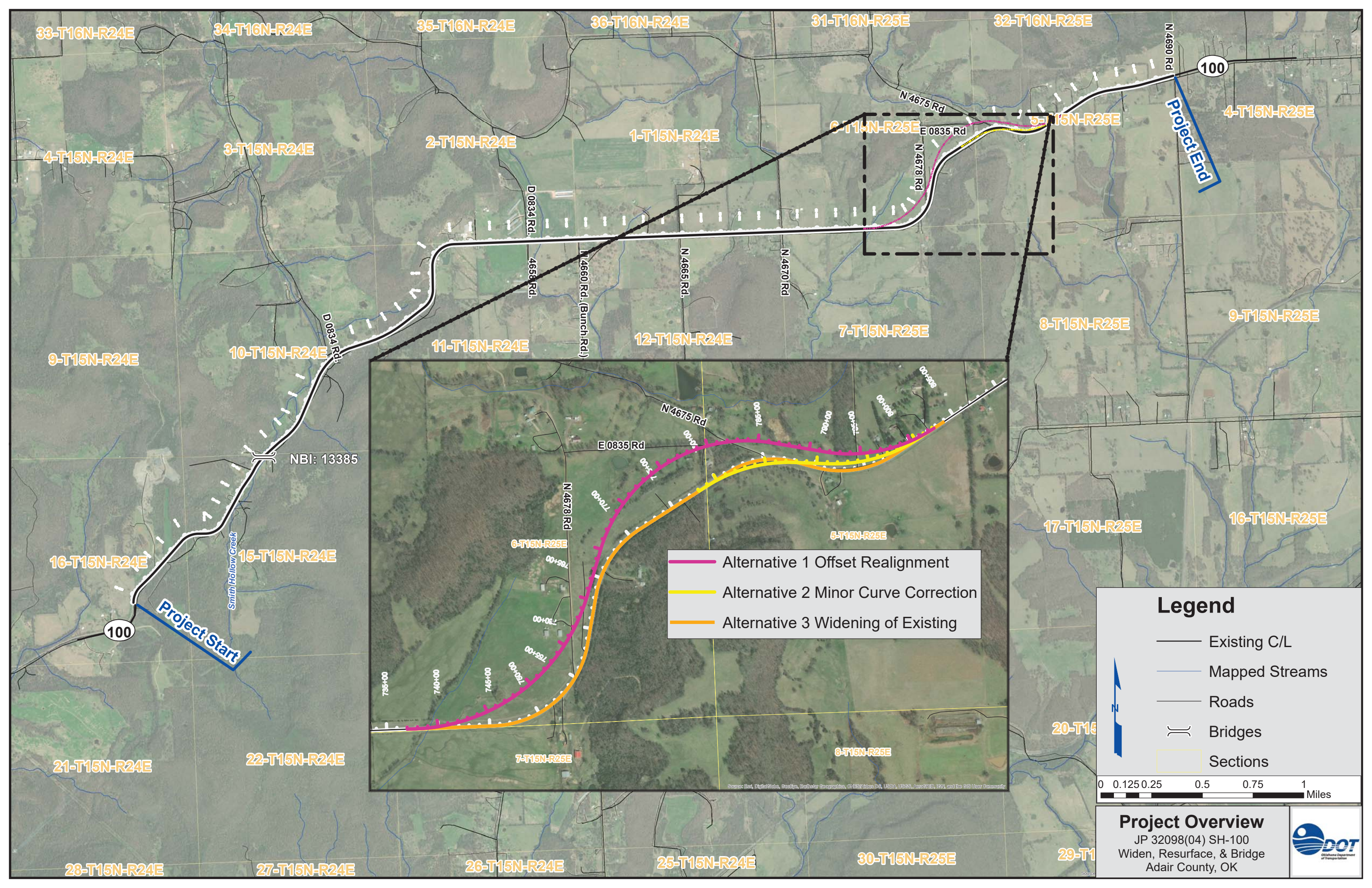
All three alternatives will improve the existing roadway to provide two, 12-foot wide driving lanes and 8-foot wide paved shoulders.

The highway would remain open during construction, and access to residences and businesses would be maintained.

<http://www.odot.org/publicmeetings>







- Alternative 1 Offset Realignment
- Alternative 2 Minor Curve Correction
- Alternative 3 Widening of Existing

### Legend

- Existing C/L
- Mapped Streams
- Roads
- Bridges
- Sections

0 0.125 0.25 0.5 0.75 1 Miles

### Project Overview

JP 32098(04) SH-100  
Widen, Resurface, & Bridge  
Adair County, OK

Source: Esri, DigitalGlobe, GeoEye, Earthstar Geographics, CNES/Airbus DS, USDA, USGS, AeroGRID, IGN, and the GIS User Community