



OKLAHOMA DEPARTMENT OF TRANSPORTATION

Environmental Programs Division

200 N.E. 21st Street
Oklahoma City, OK 73105-3204
www.odot.org

February 27, 2020

**Subject: Widen, Resurface, & Bridge SH-100 from 3 Miles North of the Cherokee County Line, Extending East 5 Miles
Adair County, OK; State Job Piece: J/P No. 32098(04)**

Dear Property Owner/Stakeholder/Utility Owner:

We are pleased to inform you the Oklahoma Department of Transportation (ODOT) is considering improvements to State Highway (SH) SH-100 from approximately 3.25 miles northeast of the Cherokee County line and extending east roughly 6.3 miles in Adair County, Oklahoma. A public meeting was held at the Stilwell Public Library on August 29, 2019. At that meeting, three alternatives were presented based on the results of an engineering alignment review. Alternative 1 involved improving the existing roadway to provide two 12-foot wide driving lanes and 8-foot wide paved shoulders with a north offset alignment curve correction near County Road (CR) NS-4675. Alternative 2 involved improving the existing roadway to provide two 12-foot wide driving lanes and 8-foot wide paved shoulders with a minor curve correction on existing alignment near CR NS-4675. Alternative 3 involved widening the existing roadway to provide two 12-foot wide driving lanes and 8-foot wide paved shoulders with no curve corrections. ODOT received comments from affected residents, the general public, and state and federal agencies. A Summary of the public agency comments and responses can be found at: https://www.ok.gov/odot/Programs_and_Projects/Public_Meetings_and_Hearings/20190829.html

Based on the completed engineering review, public meeting participation, and state and federal agency input, ODOT selected Alternative 1 as the preferred alignment (see attached map). The preferred alignment will enhance safety by correcting substandard curves, reconfiguring driveways and entrances, improving driving surfaces, widening or adding shoulders, and lengthening the bridge-box over Smith Hollow Creek. Alternatives 2 and 3 were rejected because they would not fully address safety concerns.

ODOT will move forward with preliminary design and environmental studies for Alternative 1. Currently, ODOT has this project scheduled for right-of-way and utility relocations in year 2021 with projected construction in year 2024. We will be having a public open house in late 2020 to provide you an opportunity to review the design plans.

If you are currently leasing this property, please notify your lessee of the proposed project.

Should you have any questions or specific concerns, please contact our authorized agent Mr. Geoff Canty with CC Environmental at (405) 761-1225 or geoff@ccenviro.net, or Ms. Kathy Koon, ODOT Environmental Project Manager, at (405) 521-2676, kkoon@odot.org.

Respectfully,

Siv Sundaram, P.E.
Environmental Programs Division Engineer

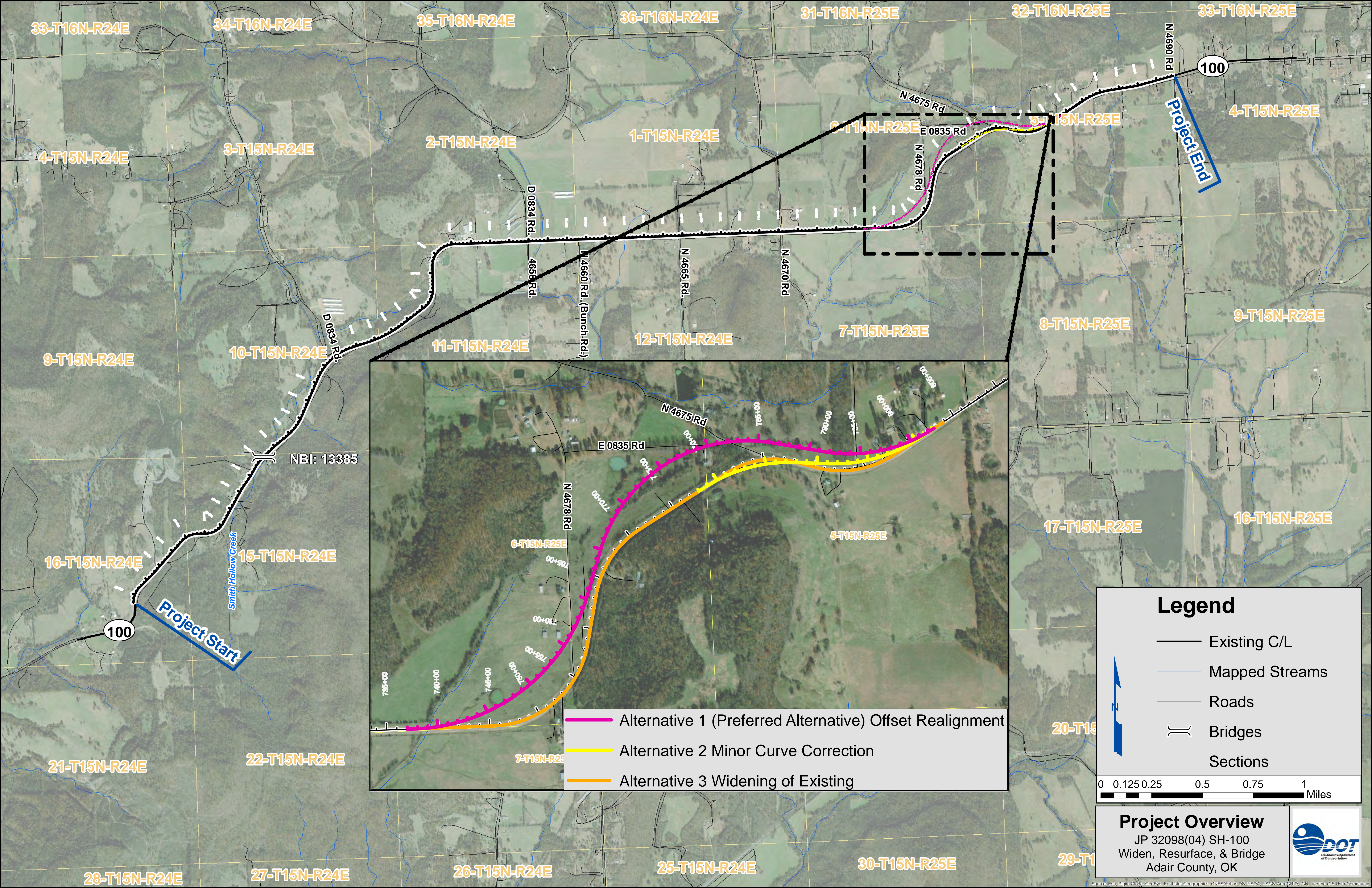
SS/KK/CC Environmental
Enclosure: Alternative Alignment Map

Copy to: Project Management Division
Roadway Design Division
Right-of-Way Division
Environmental Project Management

Field Division Engineer
Bridge Division
Survey Division

"The mission of the Oklahoma Department of Transportation is to provide a safe, economical, and effective transportation network for the people, commerce and communities of Oklahoma."

AN EQUAL OPPORTUNITY EMPLOYER



33-T16N-R24E 34-T16N-R24E 35-T16N-R24E 36-T16N-R24E 31-T16N-R25E 32-T16N-R25E 33-T16N-R25E

4-T15N-R24E 3-T15N-R24E 2-T15N-R24E 1-T15N-R24E 6-T15N-R25E 5-T15N-R25E 4-T15N-R25E

9-T15N-R24E 10-T15N-R24E 11-T15N-R24E 12-T15N-R24E 7-T15N-R25E 8-T15N-R25E 9-T15N-R25E

16-T15N-R24E 15-T15N-R24E 17-T15N-R25E 16-T15N-R25E

21-T15N-R24E 22-T15N-R24E 7-T15N-R25E 20-T15N-R25E

28-T15N-R24E 27-T15N-R24E 26-T15N-R24E 25-T15N-R24E 30-T15N-R25E 29-T15N-R25E

Project End

Project Start

NBI: 13385

Smith Hollow Creek

D 0834 Rd.

4658 Rd.

N 4660 Rd. (Bunch Rd.)

N 4665 Rd.

N 4670 Rd.

N 4675 Rd

N 4678 Rd

E 0835 Rd

E 0835 Rd

N 4675 Rd

N 4678 Rd

6-T15N-R25E

5-T15N-R25E

7-T15N-R25E

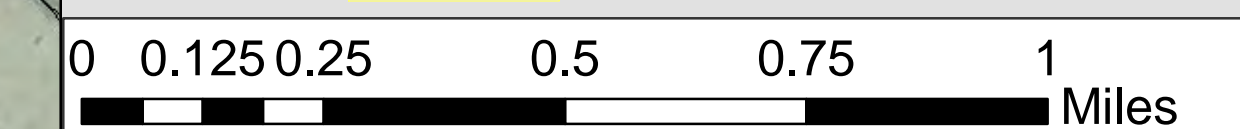
17-T15N-R25E

16-T15N-R25E

- Alternative 1 (Preferred Alternative) Offset Realignment
- Alternative 2 Minor Curve Correction
- Alternative 3 Widening of Existing

Legend

- Existing C/L
- Mapped Streams
- Roads
- Bridges
- Sections



Project Overview
 JP 32098(04) SH-100
 Widen, Resurface, & Bridge
 Adair County, OK



Source: Esri, DigitalGlobe, GeoEye, Earthstar Geographics, CNES/Airbus DS, USDA, USGS, AeroGRID, IGN, and the GIS User Community