



OPEN HOUSE

February 13, 2020 @ 5:00 – 7:00 P.M.

Cookson United Methodist Church

21685 W Cookson Bend Rd., Cookson, OK 74427

SH-82 · Cherokee County · JP: 32097(04)

ODOT INVITES YOU TO AN OPEN HOUSE MEETING REGARDING PROPOSED SAFETY IMPROVEMENTS ON SH-82.

Purpose of Meeting

The purpose of the Open House meeting is to inform the public of the proposed improvements and answer questions regarding construction activities, sequencing, and scheduling.

Project Background

The Oklahoma Department of Transportation (ODOT), in cooperation with the Federal Highway Administration (FHWA), proposes to make safety improvements to SH-82 from 4 miles south of the SH-100/SH-82 junction and extending north approximately 3.7 miles in Cherokee County, Oklahoma. This segment of SH-82 is a two-lane roadway with 12-foot wide driving lanes, narrow shoulders, deteriorating pavement, and limited sight distances. There are two bridges within the project extent. The reinforced concrete box (RCB) bridge over an unnamed tributary to Elk Creek (NBI# 13149) is narrow with a 30-foot clear roadway. The span bridge over Elk Creek (NBI# 22384) has a 44-foot wide clear roadway. Current traffic volumes are estimated at 2,000 vehicles per day (VPD) and are projected to increase to 3,280 VPD by 2050. The purpose of the proposed project is to correct roadway deficiencies, enhance safety, and efficiently accommodate traffic.

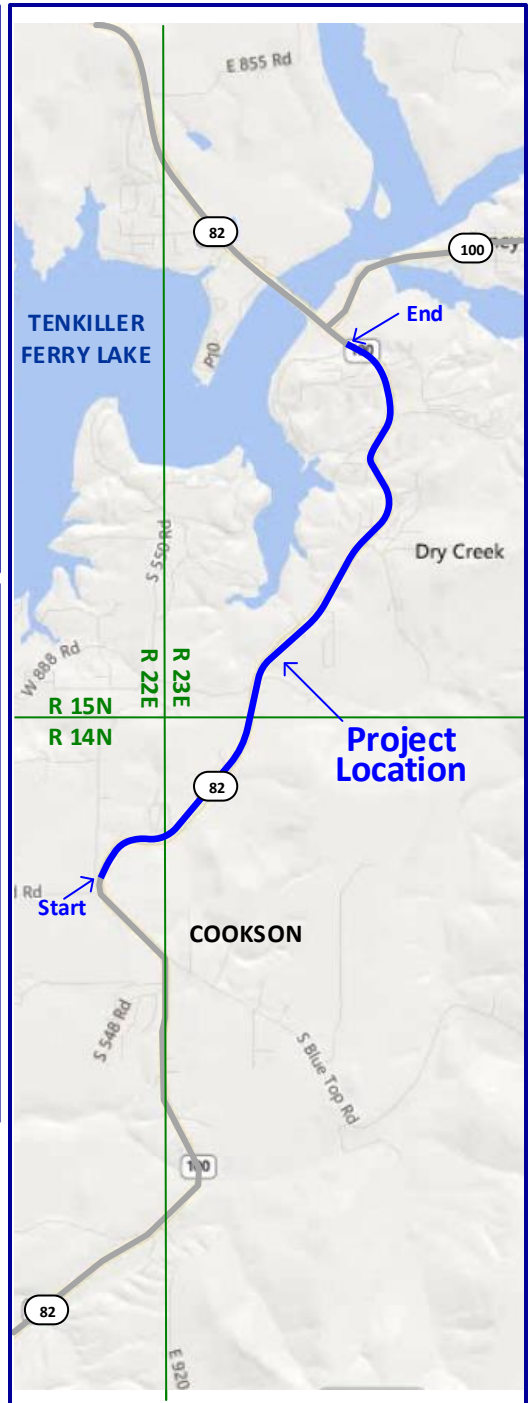
Project Description

ODOT is developing design plans for improving this segment of SH-82 while taking into consideration the cost of construction, right-of-way and utilities impacts, and environmental constraints. ODOT proposes to improve driving surfaces, reconfigure driveways and entrances, realign county road intersections, widen shoulders, and extend roadway structures and the RCB bridge. The highway will be widened to create two 12-foot wide paved driving lanes with 6-foot wide paved shoulders on existing alignment. The RCB bridge will be lengthened to create a safe clear roadway width, and the guardrail will be replaced on the Elk Creek bridge.

The proposed design will meet current standards. SH-82 will remain open during construction, and access to residences and businesses will be maintained throughout the project duration.

More Information

- Please contact our consultant:
Mr. Geoff Canty, CC Environmental, at (405) 761-1225, geoff@ccenviro.net
- Please contact ODOT Environmental Project Supervisor:
Ms. Leslie Novotny at (405) 521-2321, Environment@odot.org
- For more information, visit ODOT's public involvement webpage at <http://www.odot.org/publicmeetings>



The Oklahoma Department of Transportation (ODOT) ensures that no person or groups of persons shall, on the grounds of race, color, sex, religion, national origin, age, disability, retaliation or genetic information, be excluded from participation in, be denied the benefits of, or be otherwise subjected to discrimination under any and all programs, services, or activities administered by ODOT, its recipients, sub-recipients, and contractors. To request an accommodation please contact the ADA Coordinator at 405-521-4140 or the Oklahoma Relay Service at 1-800-722-0353, no later than 72 hours before any scheduled event. If you have any ADA or Title VI questions email ODOT-ada-titlevi@odot.org.