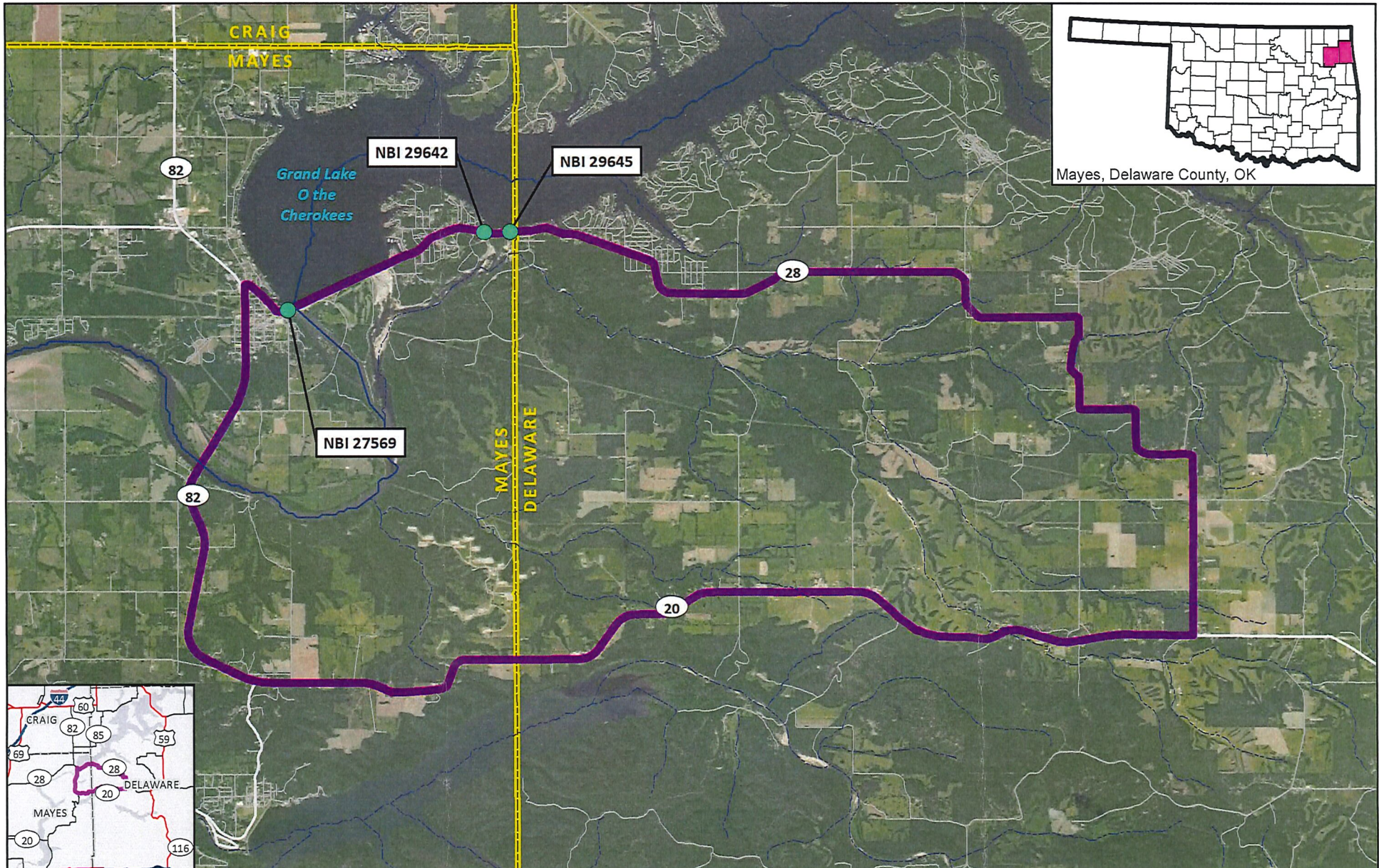





Project Location (NBI Locations) and Detour Map



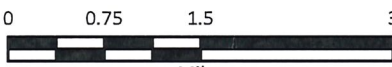
JP 31884(04)(05)
 NBI Numbers: 27569, 29642, 29645
 Detour Distance: Approximately 26.8 Miles
 Proposed Temporary Road Closure on SH 28 over
 Grand Lake O' the Cherokees
 Mayes and Delaware Counties, OK

-  NBI Points
-  Detour Route
-  County Boundaries



1/16/2020

1:95,040



Miles

