

June 18, 2021

RE: Notification of Redesign for I-40 Grade, Drain, Bridge and Surface from the Oklahoma County Line, east approximately 7.5 Miles to US-177(US-270), in Pottawatomie County, Job Piece Numbers 21007(07)(10)(13)

Dear Stakeholder

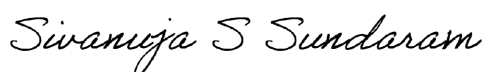
The Oklahoma Department of Transportation (ODOT), in cooperation with the Federal Highway Administration (FHWA), is proposing to improve I-40 in Pottawatomie County from the Oklahoma/Pottawatomie County line east to the US-177 interchange. ODOT hosted a virtual public meeting from July 24 to August 14, 2020 to present the design for the project and allow the public to submit input. Links to the materials presented at the virtual public meeting can be found at www.odot.org/publicmeetings.

Following the virtual public meeting, ODOT considered the public's feedback about the proposed design. A design change is being proposed based on the public feedback. Previously, the interchange at SH-102 North (McLoud Road) would have included three roundabouts (two at the intersections with the I-40 ramps and one at a proposed new I-40 frontage road). ODOT has redesigned the proposed interchange at SH-102 North (McLoud Road) to remove the roundabouts. The redesigned interchange will be traditional intersections at the two intersections with the I-40 ramps and the one intersection at the proposed new I-40 frontage road. ODOT will study the interchange traffic at these locations to determine during the final design phases the preferred type of intersection stop control (e.g., stop signs or traffic signals) and interchange lighting.

The attached figures show an overview of the project area and the proposed design, which includes the redesign of the intersections at SH-102 North (McLoud Road). ODOT currently anticipates right-of-way acquisition and utility relocations to begin in 2022 with projected construction beginning in 2023.

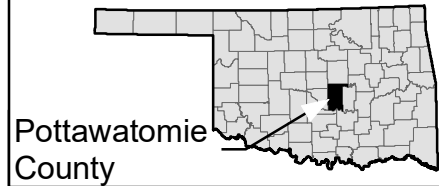
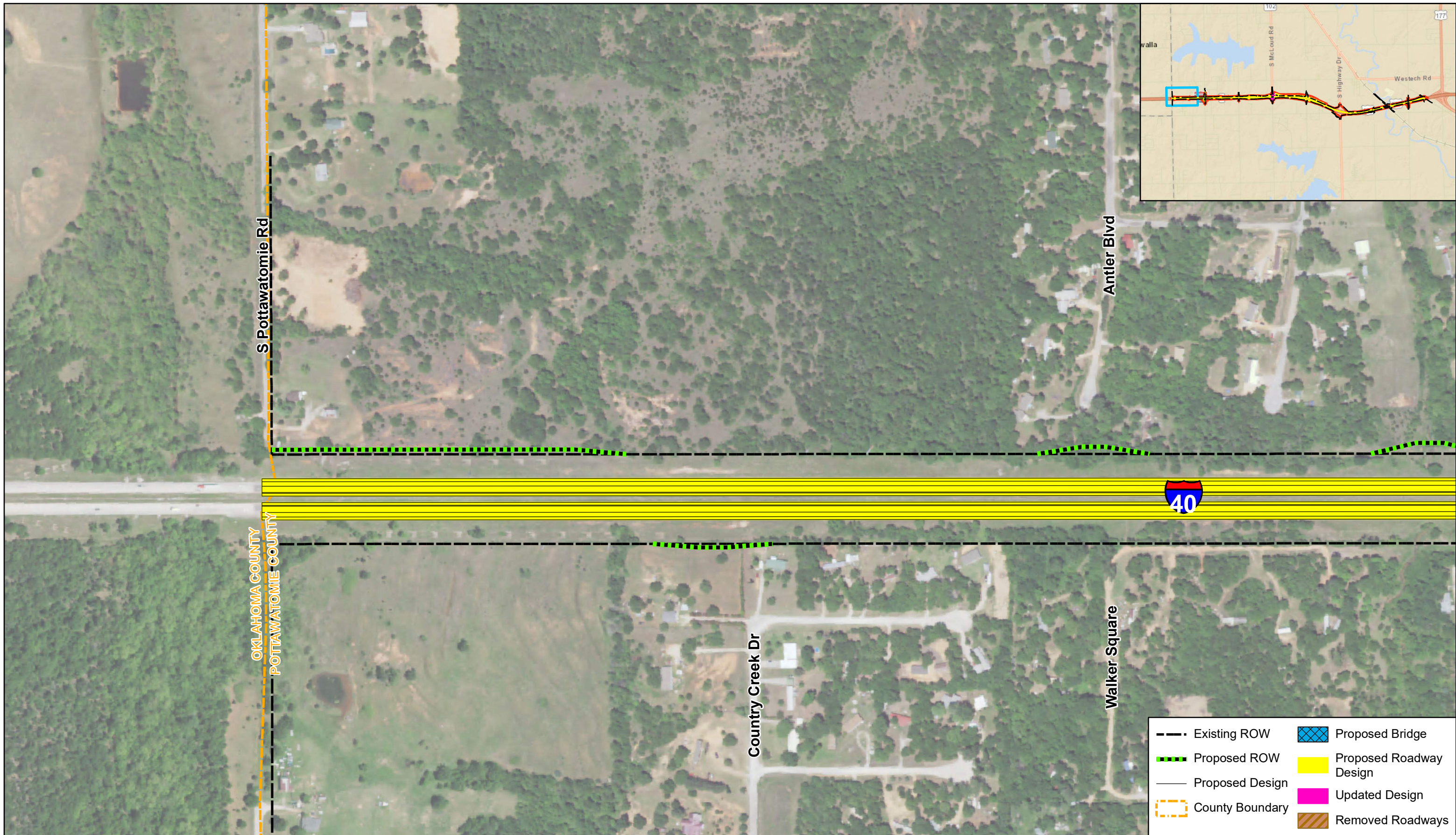
Should you have any questions regarding the project, please email environment@odot.org, or call 405-521-3050 and leave a detailed message.

Respectfully,



Siv Sundaram, P.E.
Environmental Programs Division Engineer

Enclosures: Design Update Map



Pottawatomie County

Design Update Map
JP 21007(07)(10)(13)

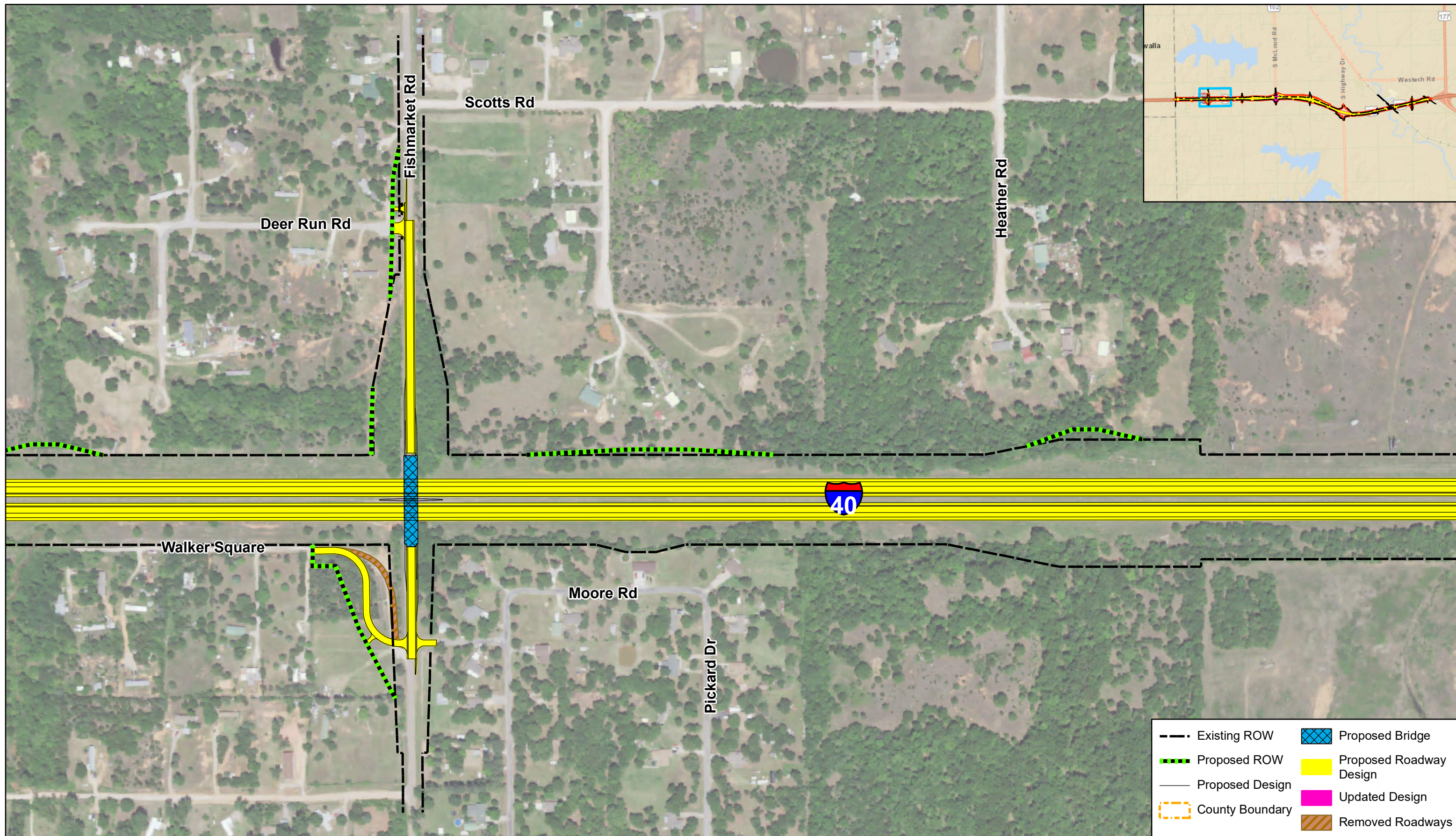
I-40 Grade, Drain, Bridge, and Surface from the Oklahoma County Line, east approximately 7.5 Miles to US-177 (US-270), in Pottawatomie County

Figure 2.1

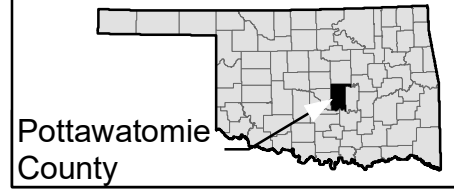


0 300 600 Feet





- Existing ROW
- Proposed ROW
- Proposed Design
- County Boundary
- ▨ Proposed Bridge
- Proposed Roadway Design
- Updated Design
- ▨ Removed Roadways

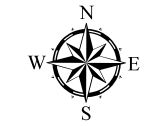


Pottawatomie County

Design Update Map
JP 21007(07)(10)(13)

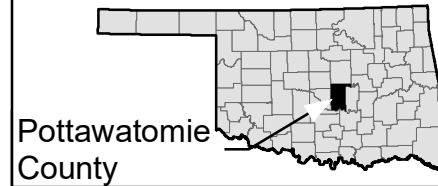
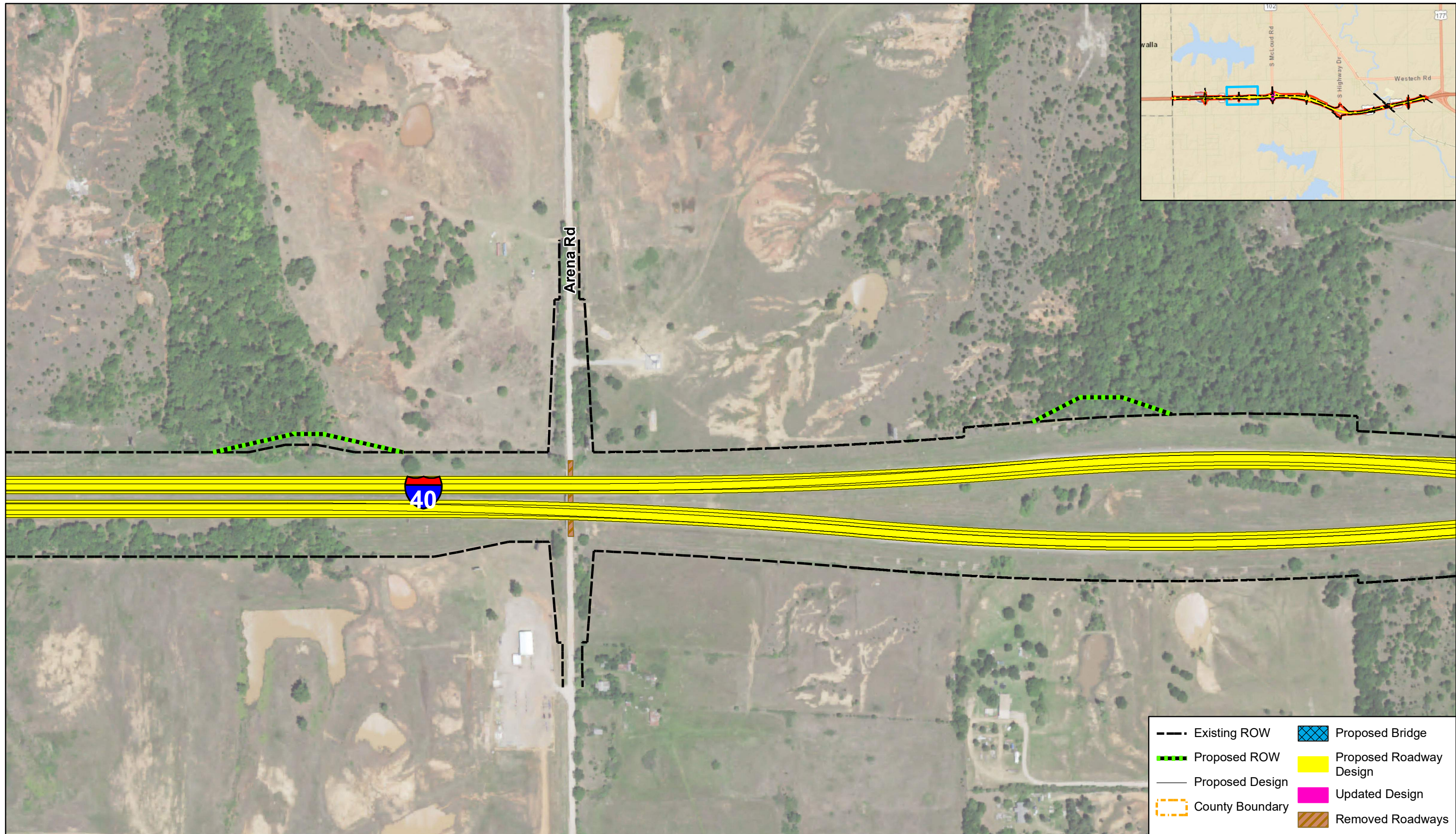
I-40 Grade, Drain, Bridge, and Surface from the Oklahoma County Line, east approximately 7.5 Miles to US-177 (US-270), in Pottawatomie County

Figure 2.2

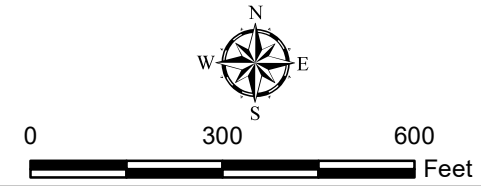


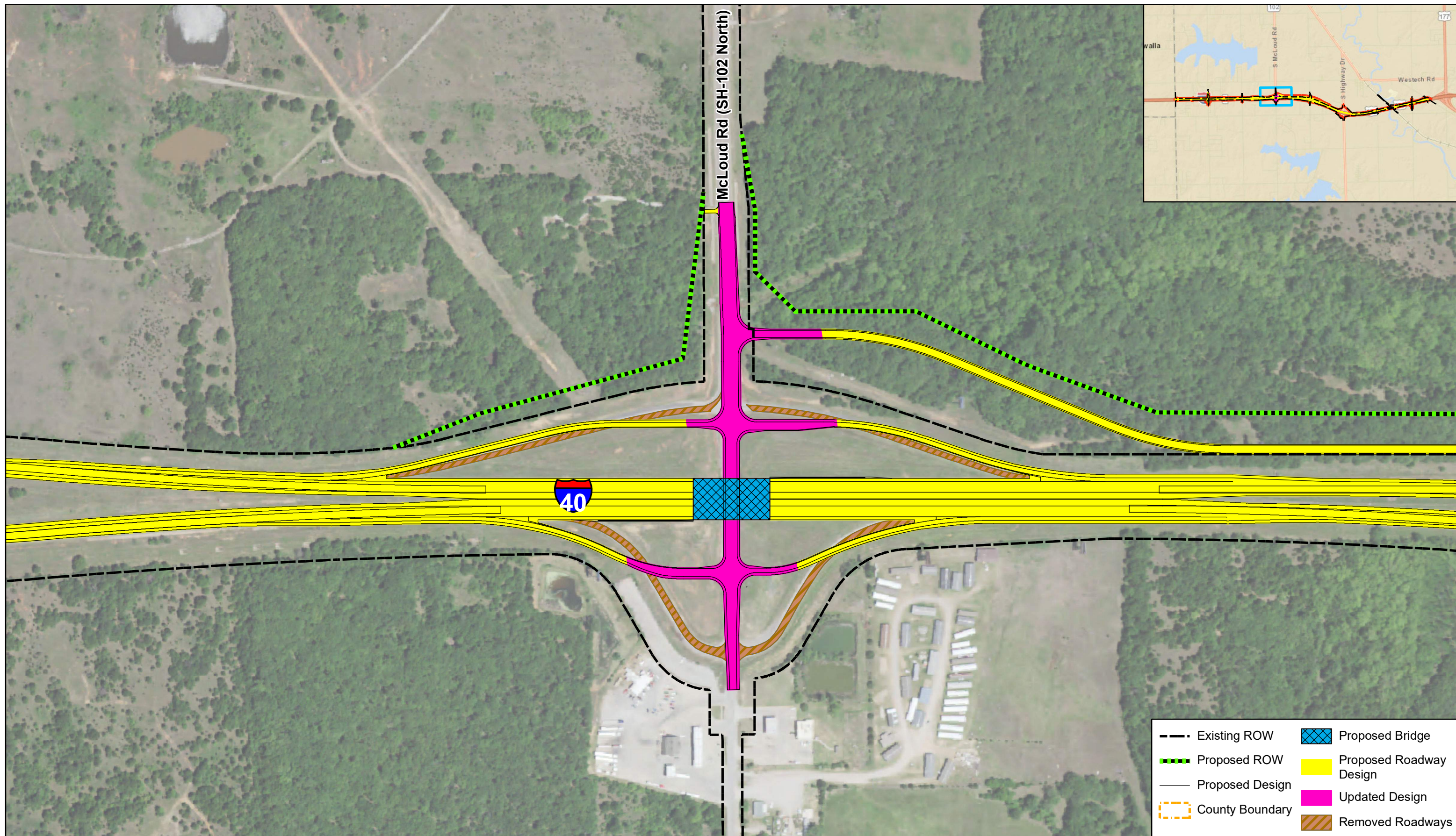
0 300 600 Feet





Design Update Map
 JP 21007(07)(10)(13)
 I-40 Grade, Drain, Bridge, and Surface from the Oklahoma County Line,
 east approximately 7.5 Miles to US-177 (US-270), in Pottawatomie County
Figure 2.3

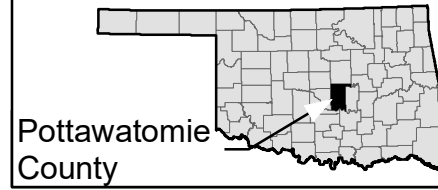




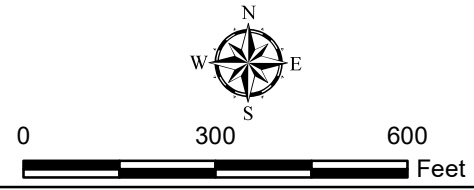
Design Update Map
JP 21007(07)(10)(13)

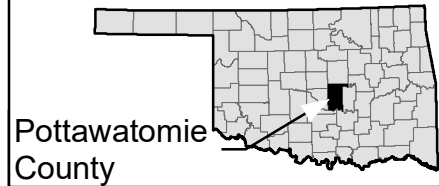
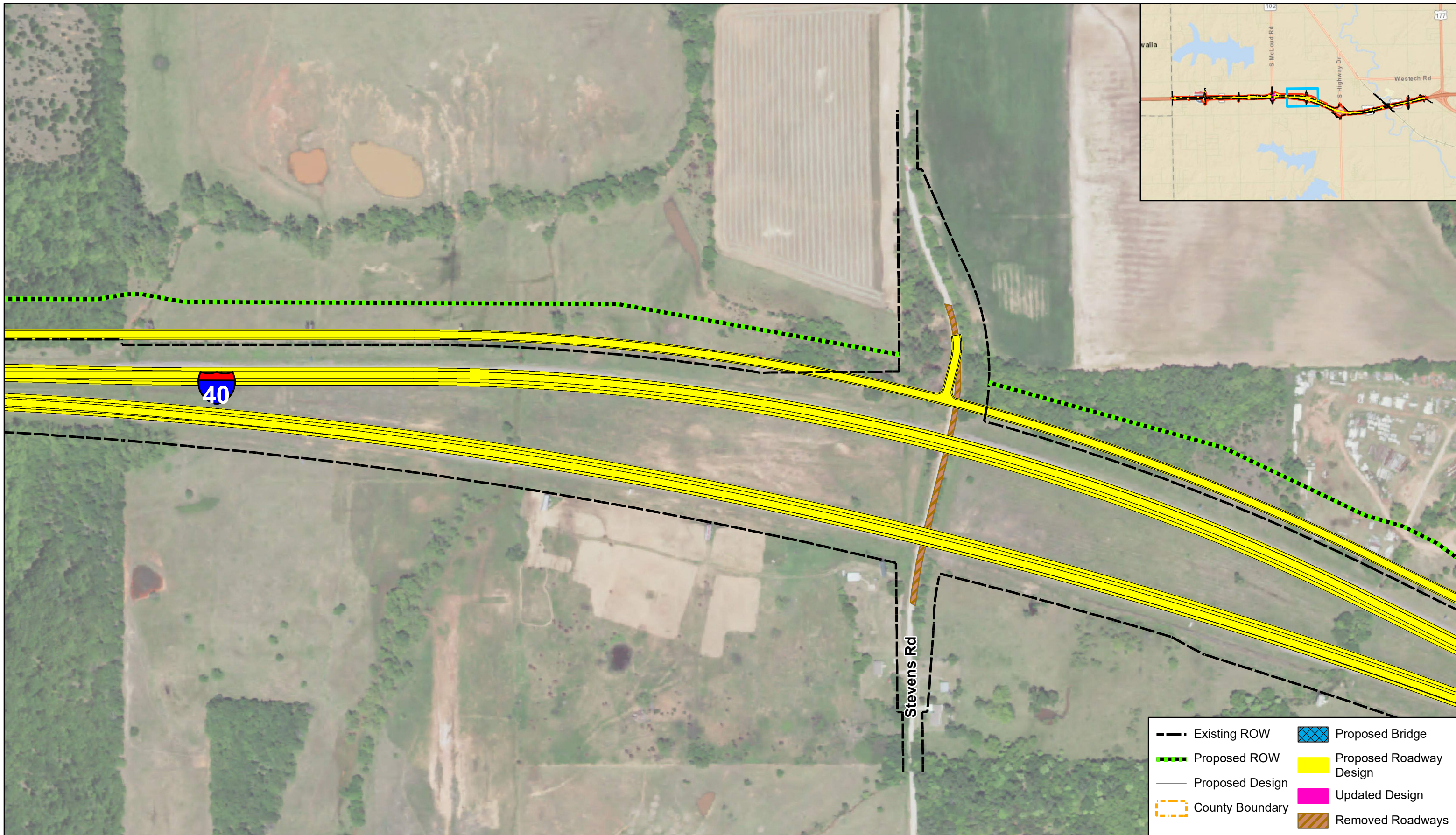
I-40 Grade, Drain, Bridge, and Surface from the Oklahoma County Line, east approximately 7.5 Miles to US-177 (US-270), in Pottawatomie County

Figure 2.4



Pottawatomie County





Pottawatomie County

Design Update Map
JP 21007(07)(10)(13)

I-40 Grade, Drain, Bridge, and Surface from the Oklahoma County Line, east approximately 7.5 Miles to US-177 (US-270), in Pottawatomie County

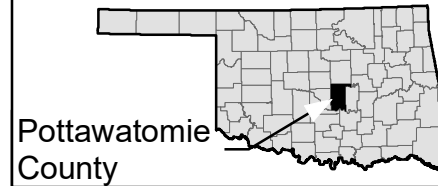
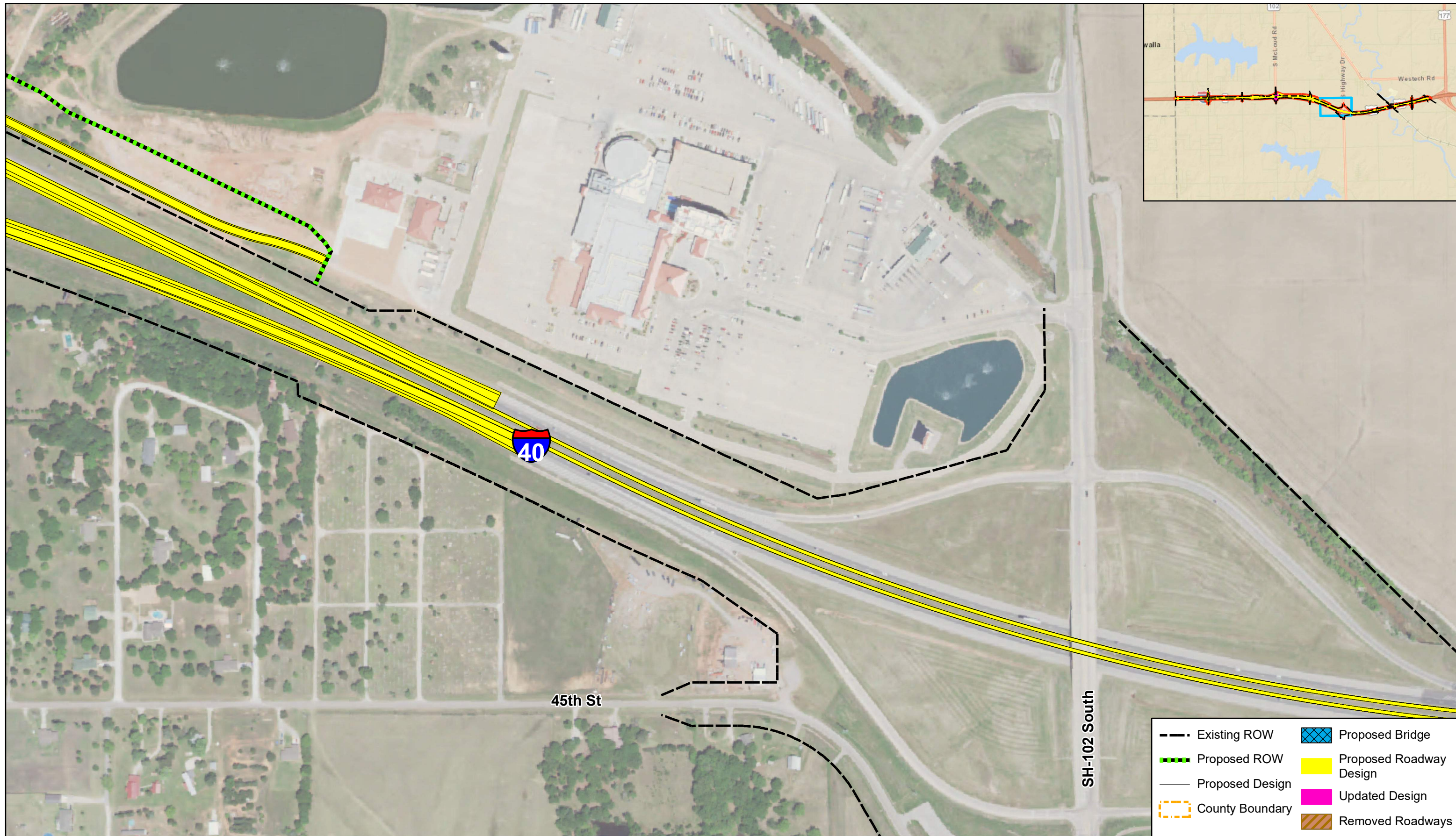
Figure 2.5



0 300 600 Feet

- Existing ROW
- - - Proposed ROW
- Proposed Design
- County Boundary
- ▣ Proposed Bridge
- Proposed Roadway Design
- Updated Design
- ▨ Removed Roadways





Pottawatomie County

Design Update Map
JP 21007(07)(10)(13)

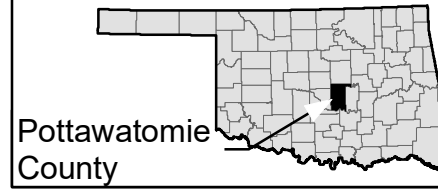
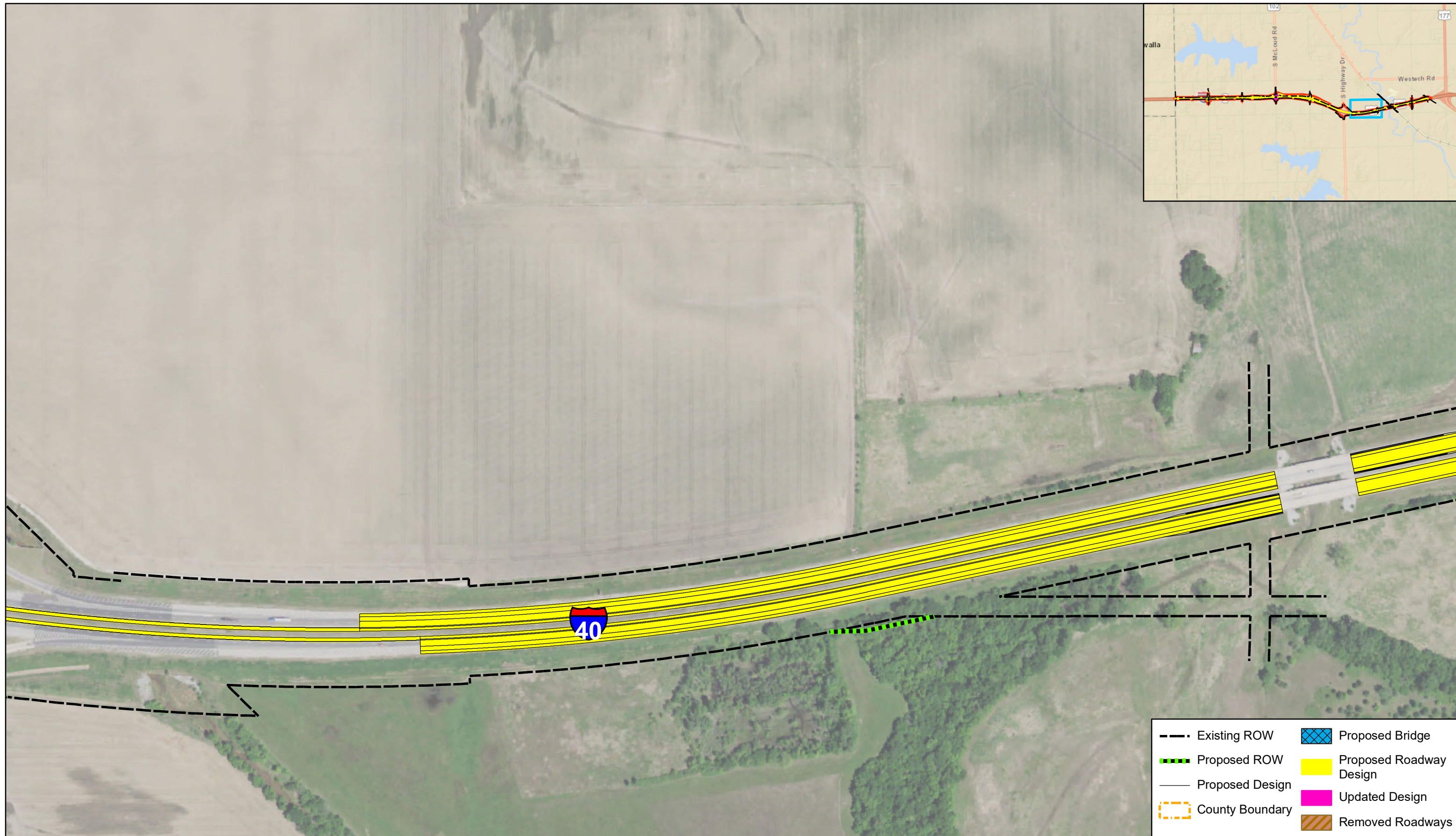
I-40 Grade, Drain, Bridge, and Surface from the Oklahoma County Line, east approximately 7.5 Miles to US-177 (US-270), in Pottawatomie County

Figure 2.6

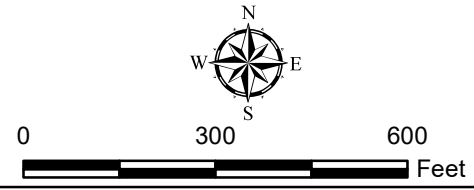


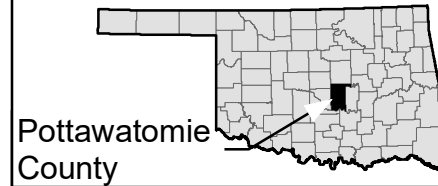
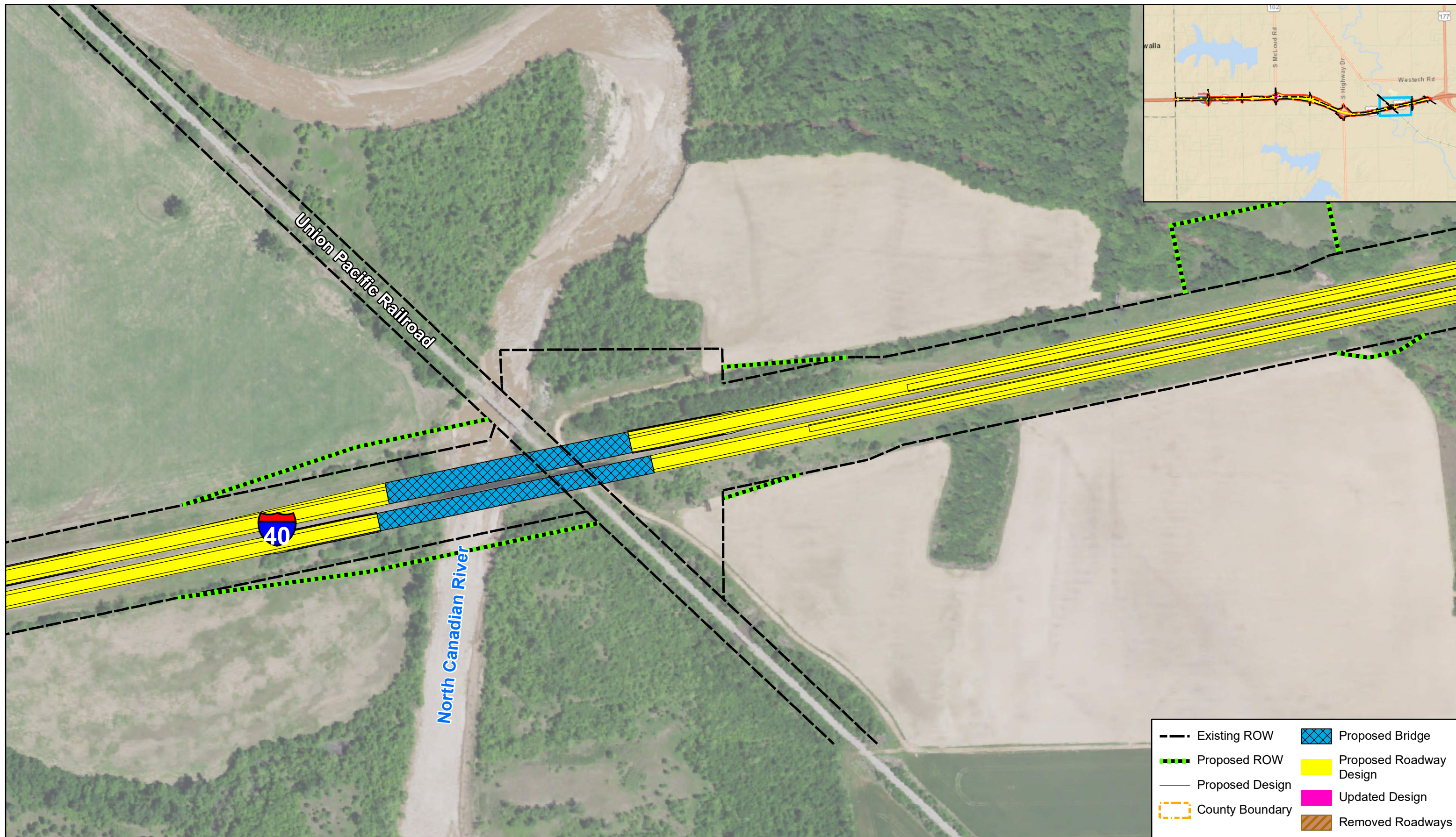
0 300 600 Feet





Design Update Map
 JP 21007(07)(10)(13)
 I-40 Grade, Drain, Bridge, and Surface from the Oklahoma County Line,
 east approximately 7.5 Miles to US-177 (US-270), in Pottawatomie County
Figure 2.7





Pottawatomie County

Design Update Map
JP 21007(07)(10)(13)

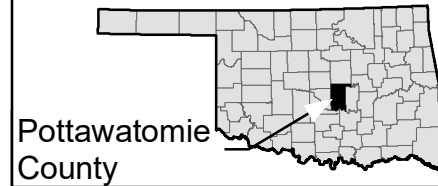
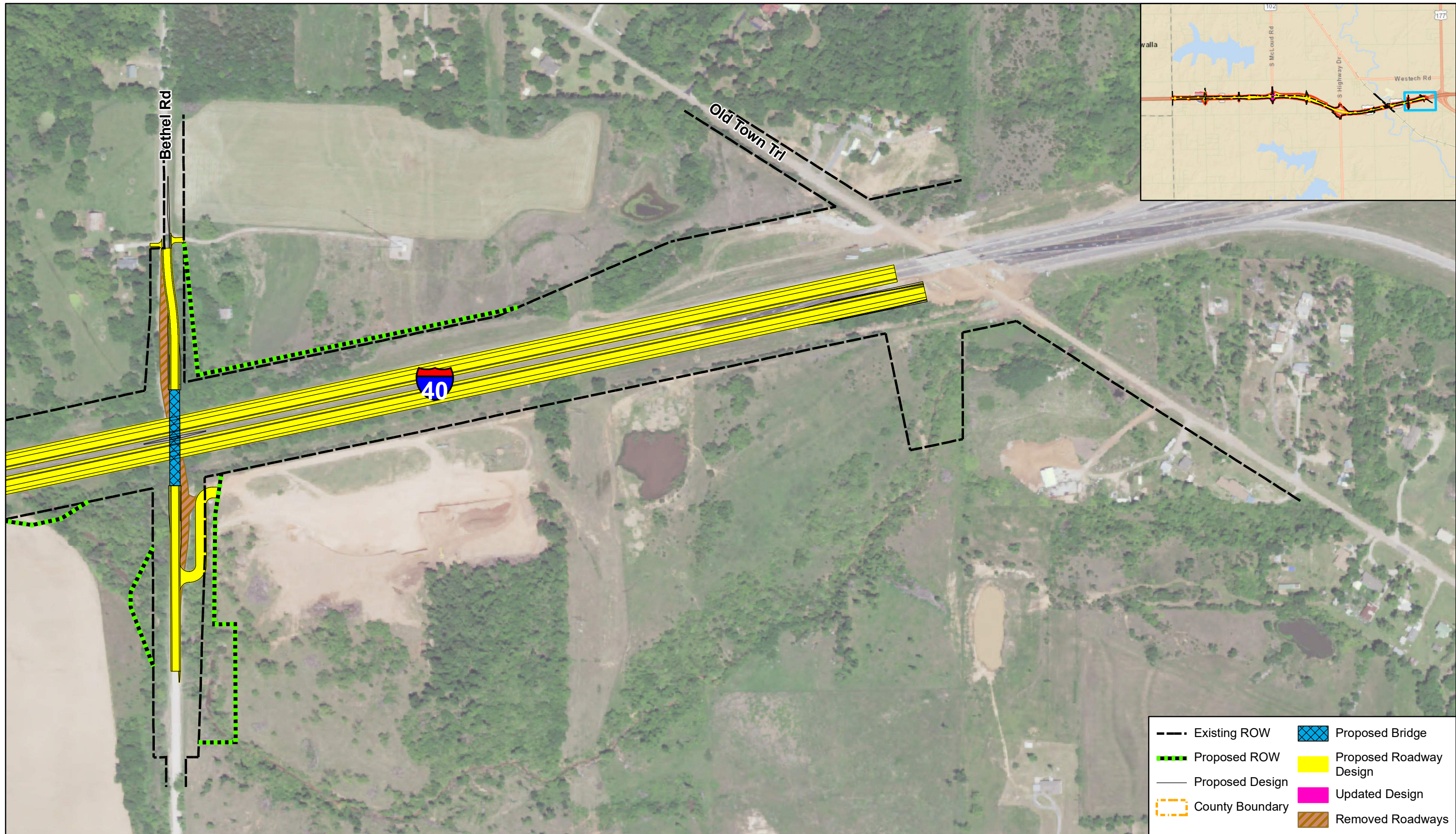
I-40 Grade, Drain, Bridge, and Surface from the Oklahoma County Line, east approximately 7.5 Miles to US-177 (US-270), in Pottawatomie County

Figure 2.8



0 300 600 Feet





Design Update Map
 JP 21007(07)(10)(13)
 I-40 Grade, Drain, Bridge, and Surface from the Oklahoma County Line,
 east approximately 7.5 Miles to US-177 (US-270), in Pottawatomie County
Figure 2.9

