

OTHER SH-9 PROJECTS



- SH-9 Improvements (JP 23288(04)) from SH-102 east 5.49 miles to end of existing concrete section at west side of Tecumseh, Pottawatomie County

PROJECT INFORMATION SUMMARY

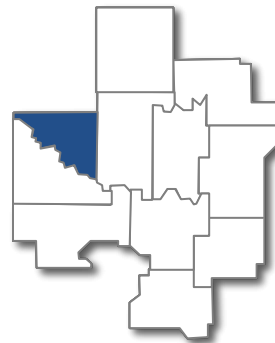
- Right-of-Way & Utility Relocation programmed to start in: **2021**
- Construction programmed to start in: **2025**
- Current Annual Average Daily Traffic (AADT) in year 2020: **10,190 Vehicles a day**
- Future Estimated AADT in year 2045: **15,200 Vehicles a day**
- Highway will remain open to traffic at all times during construction

DISTRICT 3 ENGINEER: RON BROWN, P.E.

*Totals DO NOT include Toll Roads
**Totals DO NOT include County Bridges

Total Road Miles*: 1,791.65
Total Interstate Miles*: 163.67
Total Bridges:** 933

Counties: Cleveland, Coal, Garvin, Hughes, Johnston, Lincoln, McClain, Okfuskee, Pontotoc, Pottawatomie, Seminole



PLEASE PROVIDE YOUR COMMENTS BY OCTOBER 12, 2020

For more information about the project, contact:

(405) 325-3269
or
environment@odot.org

<http://www.odot.org/publicmeetings>



**VIRTUAL
OPEN HOUSE**
*September 25 –
October 12, 2020*
SH-9 in Norman
from ~108th Avenue SE, east to
156th Avenue SE
Cleveland County: JP 20266(14)
www.odot.org/SH9



VIRTUAL OPEN HOUSE

The Oklahoma Department of Transportation will host a virtual open house to present the latest information on the SH-9 project in Norman. This meeting will present the design for the project and allow the public to submit input. Due to concerns over the spread of COVID-19, this will be a web-based format (no in-person meeting). The information will be available beginning September 25, 2020 and comments are requested by October 12, 2020.



PURPOSE

The purpose of this project is to increase driver safety and accommodate the current and anticipated traffic volumes.

The public may view the entire project design on the virtual meeting website, including details about right-of-way acquisition and access, and more details about the proposed improvements.



JOIN

www.odot.org/SH9



September 16, 2020

RE: Virtual Open House for SH-9 Improvements: From 108th Avenue SE, East to 156th Avenue SE in Norman, Cleveland County OK
State Job Piece Number: J/P 20266(14)

Dear Stakeholders, Property Owners, and Utility Owners:

The Oklahoma Department of Transportation (ODOT), in cooperation with the Federal Highway Administration (FHWA), proposes to make roadway improvements on SH-9 from approximately 108th Avenue SE, extending east approximately 4.4 miles to 156th Avenue SE (County Road EW-124), all within the city limits of Norman. The purpose and need for this project is to correct roadway deficiencies, enhance safety, and efficiently accommodate future traffic.

Due to ongoing concerns about COVID-19, ODOT will host a virtual Open House from **September 25 to October 12, 2020** to present the design for the project and allow the public to submit input. Results of the detailed environmental studies conducted for the project will also be available to view. This pamphlet contains additional information about the virtual open house and a handout describing our right-of-way acquisition process. This right-of-way handout is for informational purposes only as your property may or may not be affected by the proposed project. After the virtual Open House, the meeting materials will be available on the ODOT Public Meeting Website: <http://www.odot.org/publicmeetings>

If you are currently leasing this property, please notify your lessee of our Open House.

Should you have any questions regarding this project, please email environment@odot.org, or call 405-325-3269 and leave a detailed message.

Sincerely,

Sivaniya S Sundaram

Siv Sundaram, P.E.
Environmental Programs Division Engineer

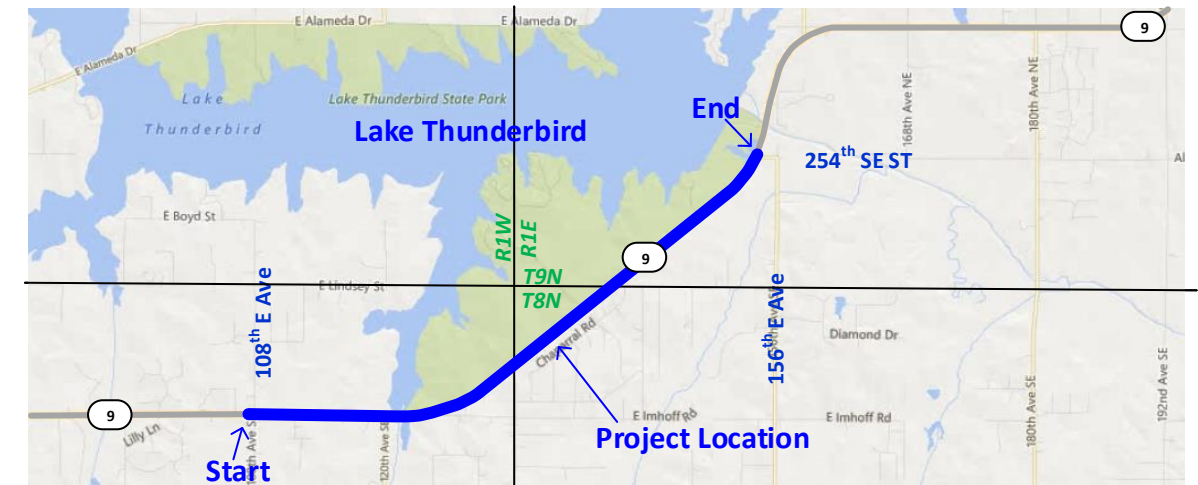
The Oklahoma Department of Transportation (ODOT) ensures that no person or groups of persons shall, on the grounds of race, color, sex, religion, national origin, age, disability, retaliation or genetic information, be excluded from participation in, be denied the benefits of, or be otherwise subjected to discrimination under any and all programs, services, or activities administered by ODOT, its recipients, sub-recipients, and contractors. To request an accommodation please contact the ADA Coordinator at 405-521-4140 or the Oklahoma Relay Service at 1-800-722-0353, no later than 72 hours before any scheduled event. If you have any ADA or Title VI questions email ODOT-ada-titlevi@odot.org.

"The mission of the Oklahoma Department of Transportation is to provide a safe, economical, and effective transportation network for the people, commerce and communities of Oklahoma."

AN EQUAL OPPORTUNITY EMPLOYER

Project Background

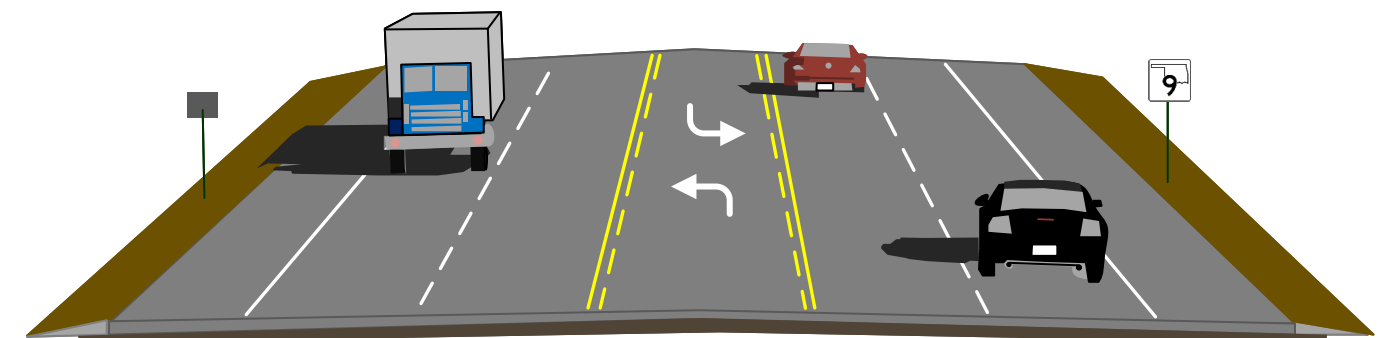
ODOT, in cooperation with the FHWA, proposes to make safety improvements and add capacity to SH-9 from roughly 108th Ave. SE, extending east approximately 4.4 Miles to 156th Ave. SE in Norman, Cleveland County, Oklahoma. This segment of SH-9 is a two-lane facility with 12-foot wide driving lanes and 10-foot wide paved shoulders. There are two bridges and several drainage structures within the project extent that would be addressed as part of this project. This section has deteriorating pavement, limited sight distances, steep slopes, and higher than average traffic. Current traffic volumes are 10,190 vehicles per day (vpd) and are projected to increase to 15,200 vpd by 2045. The purpose of the proposed improvements is to correct roadway deficiencies, enhance safety, and efficiently accommodate future traffic.



Project Description

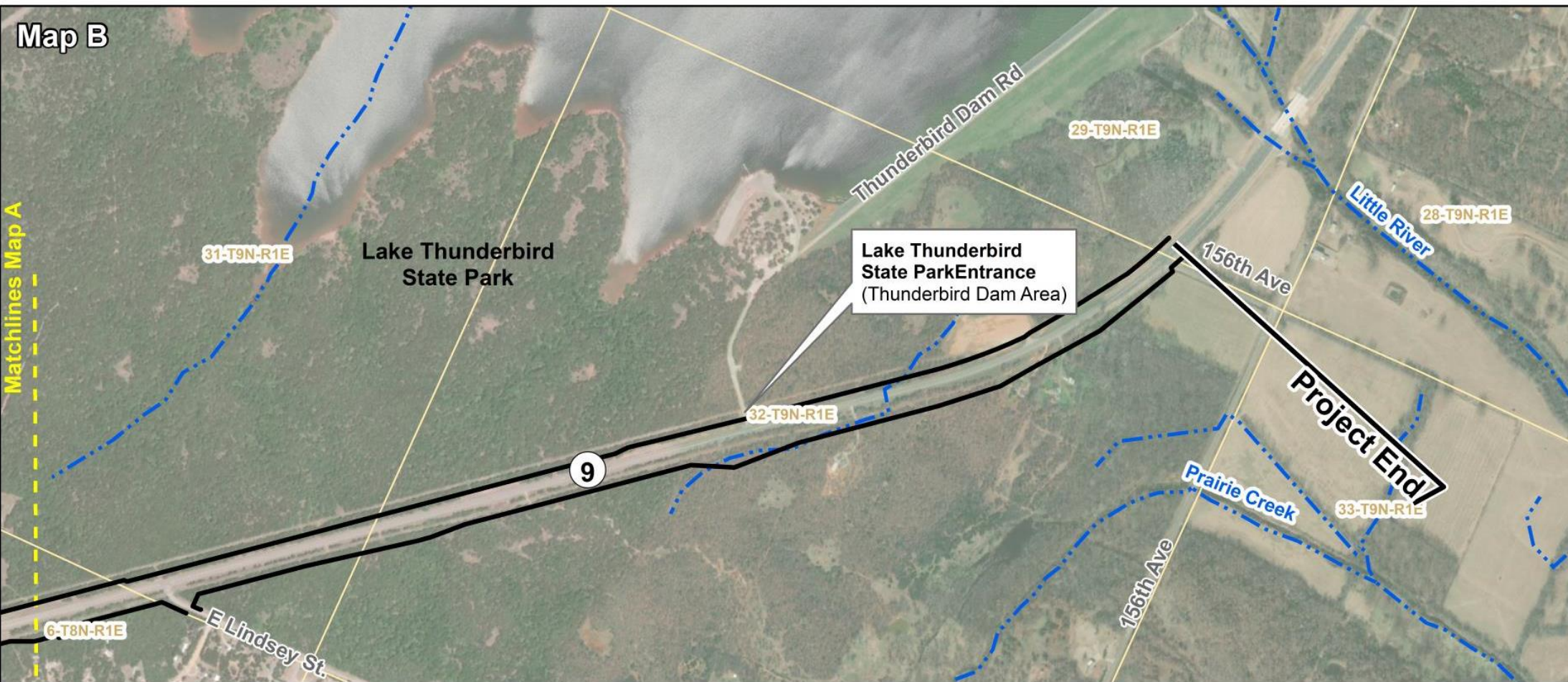
In an effort to increase safety and accommodate elevated traffic levels, the highway will be widened to create four 12-foot wide driving lanes with a 16-foot wide center turning lane, and 10-foot wide paved shoulders on existing alignment or on slightly offset south alignment. Slight offset alignments were selected to minimize impacts to Thunderbird State Park, local residences and community facilities. During construction, the highway will remain open, and access to residences, businesses, and the Lake Thunderbird State Park will be maintained throughout the project duration.

Typical Section


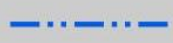





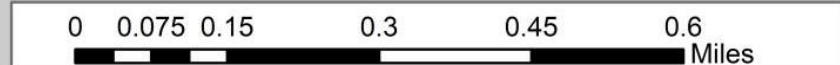
5-Lane Typical Roadway Section with Center Turn Lane

Typical includes: four 12-foot wide driving lanes; 16-foot wide center turn lane; 10-foot wide shoulders



Legend

-  Project Extent
-  Mapped Streams
-  Sections
-  Overview Matchline

Project Overview

J/P 20266(14)
 SH-9 from ~108th Ave E,
 East 4.4 mi to 156th Ave E
 Cleveland County, OK

