

March 17, 2021

Subject: Alternative Selection for I-40 Exit 65 in Clinton, Custer County, JP 31842(04)

Dear Stakeholder:

We are pleased to inform you that the Oklahoma Department of Transportation (ODOT) in cooperation with Federal Highway Administration (FHWA) and with City of Clinton input has selected the final alternative for the improvements to I-40 Exit 65/65A and associated intersections in Clinton, Custer County. Three public meetings were held for the project (May 24, 2016, February 28, 2019, and a virtual public open house held December 2-21, 2020). In total, ten alternatives were presented to the public for consideration and input. Links to the materials presented at each meeting can be found at www.odot.org/publicmeetings.

Alternatives 1-6 were presented at the first public meeting in 2016. These alternatives included a Do Nothing alternative (Alternative 1), a standard diamond (Alternative 2), a diverging diamond (Alternative 3), a single point urban interchange (Alternative 4), a diamond with roundabouts (Alternative 5), and a rotary interchange (Alternative 6). Feedback received from the public meeting expressed concern that Alternatives 1-6 did not provide access to I-40 in both directions at both Exit 65 and 65A.

In response to public feedback, ODOT developed two additional alternatives to provide improved mobility on I-40 and improved access for both interstate and local traffic (Alternatives 7 and 8). Alternative 7 was presented as the preferred alternative at the public meeting in February 2019. Alternative 7 combined the two interchanges at Exit 65 and 65A with ramps and frontage roads and utilized two roundabout intersections. Following the February 2019 public meeting, the City of Clinton requested that ODOT revisit Alternative 1-6 to develop a more traditional design that would still maintain access to Gary Blvd. and Neptune Dr.

In response to the City's request, ODOT developed Alternatives 2D and 9B. Alternative 2D was a modification of the Alternative 2 diamond interchange at Gary Blvd. with frontage road connections to Neptune Dr. Alternative 9B was a folded diamond interchange that provided direct ramp connections to both Gary Blvd. and Neptune Dr. Based on the analysis of traffic and safety performance, impacts to the environment, and public and agency input, **ODOT selects Alternative 2D** for the project (see attached map). Alternative 2D will construct a diamond interchange at I-40 at Gary Boulevard (Exit 65). Frontage roads will be constructed on both sides of I-40 to connect the interchange to Neptune Dr./10th Street (Exit 65A), with a free-flow turnaround at Gary Boulevard to allow Neptune Dr./10th Street traffic to access I-40 without having to pass through the intersections at Gary Blvd. The project will extend Gary Blvd. under I-40 to connect to Chapman Rd. Red Wheat Dr. will be removed and businesses with existing access to Red Wheat Dr. will connect directly to Gary Blvd. The intersection of Gary Blvd. and Lexington/Oliver Ave. will be reconfigured as a standard 4-leg intersection with stop control on Lexington/Oliver. This alternative is anticipated to have the most safety benefit, fewer environmental impacts, and a lower construction and maintenance cost. The City of Clinton passed a resolution in support of ODOT's preferred alternative at their February 16, 2021 City Council meeting.

ODOT will move forward with design of Alternative 2D, while completing detailed environmental studies for this alternative. ODOT currently anticipates right-of-way acquisition and utility relocations to begin in 2022 with projected construction in 2024, depending on funding availability. I-40 and all local roadways will remain open to traffic during construction.

Should you need any information or have specific concerns, please contact Kirsten McCullough with Garver at (918) 858-3799 or KJMcCullough@GarverUSA.com.

"The mission of the Oklahoma Department of Transportation is to provide a safe, economical, and effective transportation network for the people, commerce and communities of Oklahoma."



OKLAHOMA
Transportation

ENVIRONMENTAL PROGRAMS DIVISION
200 N.E. 21ST STREET
OKLAHOMA CITY, OK 73105-3204
WWW.ODOT.ORG

Respectfully,

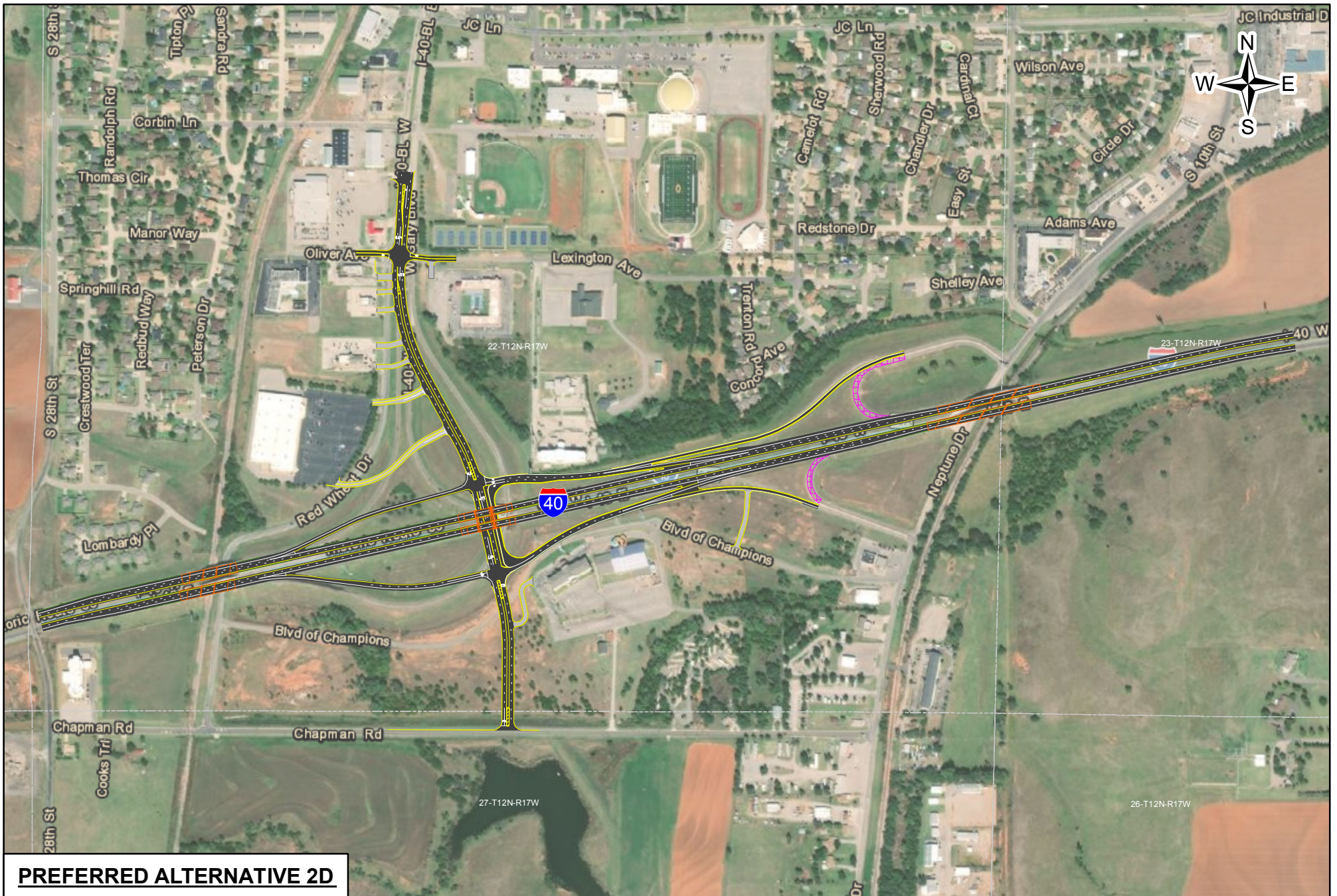
Brent Almquist, P.E.
District 5 Engineer

BA:Garver



Enclosures: Preferred Alternative Map, Location Map
Copy to: Project Management Division, Environmental Programs Division, Roadway Design Division,
Bridge Design Division, Cultural Resources Program, Tribal Liaison

"The mission of the Oklahoma Department of Transportation is to provide a safe, economical, and effective transportation network for the people, commerce and communities of Oklahoma."

AN EQUAL OPPORTUNITY EMPLOYER



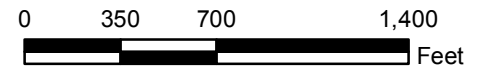
PREFERRED ALTERNATIVE 2D

-  Span Bridge
-  Ramp Closure

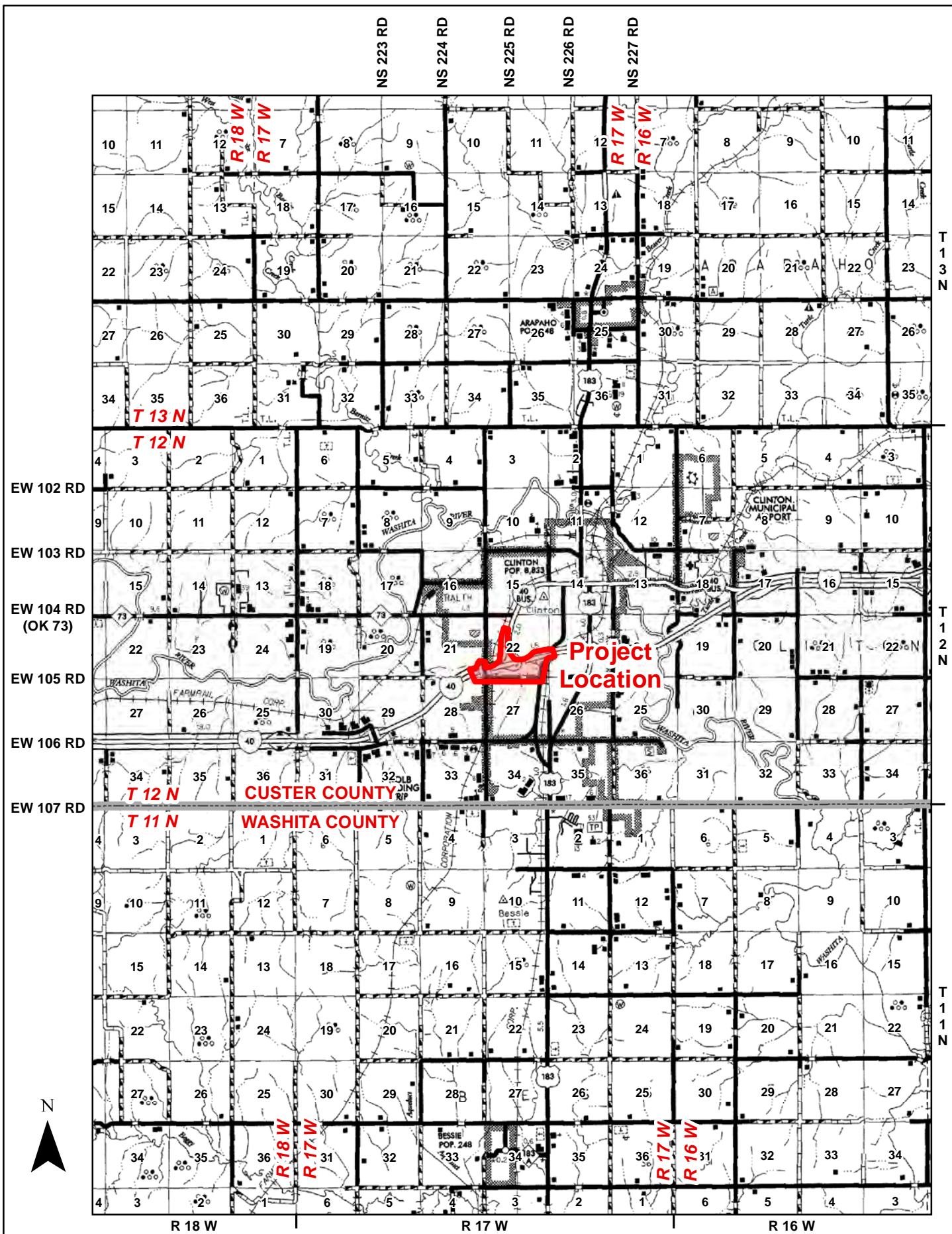


2/17/2021

Oklahoma Department of Transportation
Preferred Alternative Map
Custer County JP 31842(04)



I-40 Interchange Improvements and Intersection Modification
at Exit 65, I-40B West Junction (Gary Boulevard) in Clinton



0 5,000 10,000 Feet
 1 in = 2 miles



Job No. 31482(04)
 Project J3-1482(004)
 Custer County
 I-40 ODOT Interchange
 Modification at Exit 65

Figure 1
Location Map