

PROJECT LOCATION



PROJECT INFORMATION SUMMARY

- **Right-of-Way & Utility Location Start:** 2022
- **Construction Start:** Fiscal Year 2025
- **Current Annual Average Daily Traffic (AADT) in year 2018:** I-35: 36,700; SH-74: 2,500
- **Future Estimated AADT by year 2040:** I-35: 56,500; SH-74: 4,500

DISTRICT 3 ENGINEER: RON BROWN, P.E.

*Totals DO NOT include Toll Roads

**Totals DO NOT include County Bridges

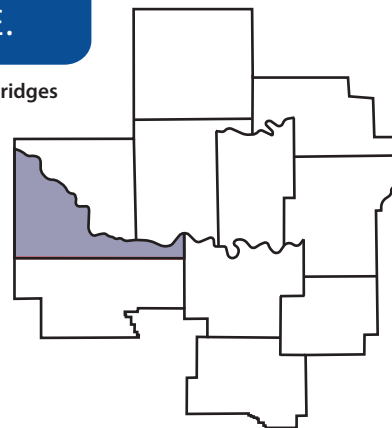
***Total Road Miles**
1,791.65

***Total Interstate Miles**
163.67

****Total Bridges**
933

COUNTIES

Cleveland, Coal, Garvin, Hughes, Johnston, Lincoln, **McClain**, Okfuskee, Pontotoc, Pottawatomie, Seminole



PLEASE PROVIDE YOUR COMMENTS BY **FEB. 10, 2021**

For more information about the project:

(405) 325-3269
environment@odot.org

<http://www.odot.org/publicmeetings>



VIRTUAL OPEN HOUSE
JAN. 27, 2021 - FEB. 10, 2021

I-35: Interchange at SH-74 (Grant Street)
Purcell, McClain County; JP 32802(04)

www.odot.org/I35Purcell



VIRTUAL OPEN HOUSE

The Oklahoma Department of Transportation will host a virtual open house to present the proposed improvements to I-35: Interchange at SH-74 (Grant Street) in McClain County. This open house will present the design for the project and allow the public to submit input. Due to concerns over the spread of COVID-19, this will be a web-based format (no in-person meeting). The information will be available beginning Wednesday, Jan. 27, 2021, and comments are requested by Wednesday, Feb. 10, 2021.



Purpose

The purpose of the Virtual Open House is to present information about the proposed improvements to I-35: Interchange at SH-74 (Grant Street) and obtain information from the public to further assist in the identification of critical social, economic, and environmental effects that may result from the project.



Join

www.odot.org/I35Purcell



OKLAHOMA
Transportation

January 25, 2021

Dear Stakeholders, Property Owners and Utility Owners:

RE: I-35 Interchange at SH-74 (Grant St.) in Purcell, McClain County, ODOT JP 32802(04),
Project J3-2802(004)SS

The Oklahoma Department of Transportation (ODOT), in cooperation with the City of Purcell and the Federal Highway Administration (FHWA), is proposing to provide access at the I-35/SH-74 (Grant St.) Junction in the city of Purcell in McClain County. Under existing conditions, emergency response to incidents on I-35 is delayed by the lack of access to I-35 between milepost 91 and 95 near Purcell. Secondly, the US-77/North Green Avenue directional interchange is missing the southbound I-35 connection. The purpose of this project is to improve emergency vehicle access and reduce incident response times by providing additional access to I-35 at SH-74. Additional access to I-35 at SH-74 will improve system connectivity, accessibility to the regional transportation network, and support the continued growth of the local community.

ODOT and the City of Purcell have recently tasked a Consultant to look at alternatives for improving access at I-35 and SH-74 in Purcell, while taking into consideration construction costs, right-of-way costs, and environmental constraints.

Due to ongoing concerns about COVID-19, ODOT will host a virtual open house from **January 27 to February 10, 2021**. The purpose of the open house is to present information about the project and obtain input from the public to further assist in the identification of critical social, economic and environmental effects that may result from the project. This pamphlet contains additional information about the virtual public open house. After the virtual public open house, project information may be viewed at www.odot.org/publicmeetings.

If you are leasing this property, please notify your lessee of this virtual public open house.

Should you have any questions or would like additional information regarding this project, please email environment@odot.org, or call 405-325-3269 and leave a detailed message.

Respectfully,

Sivaniya S Sundaram

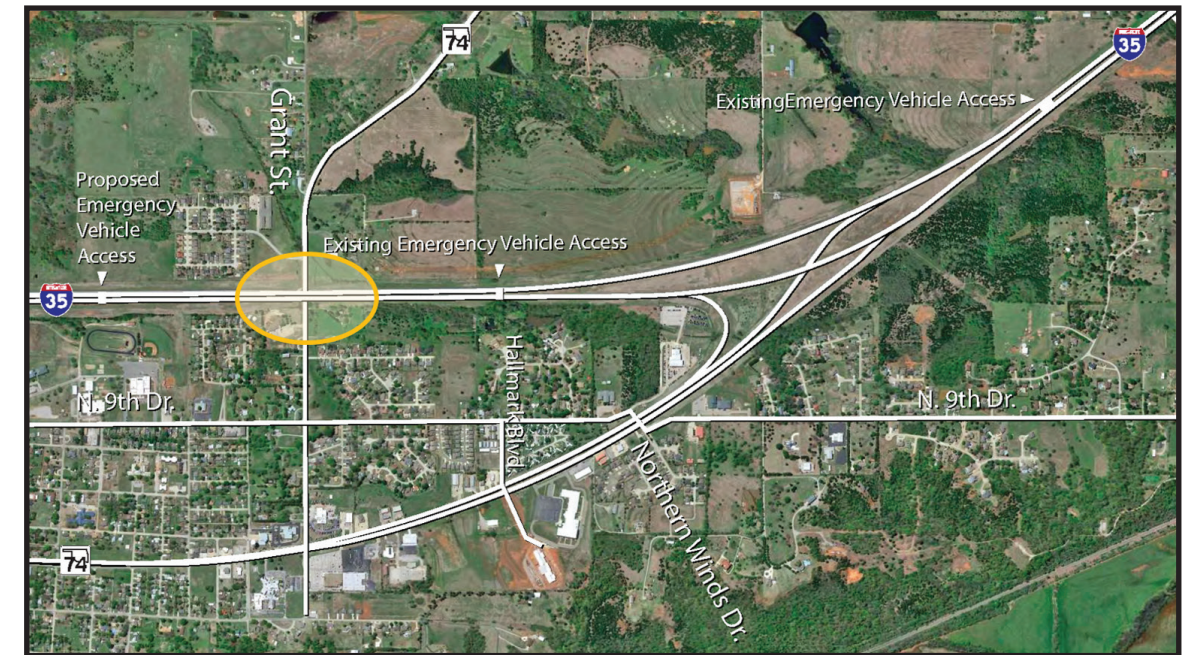
Siv Sundaram, P.E.
Environmental Programs Division Engineer

The Oklahoma Department of Transportation (ODOT) ensures that no person or groups of persons shall, on the grounds of race, color, sex, religion, national origin, age, disability, retaliation or genetic information, be excluded from participation in, be denied the benefits of, or be otherwise subjected to discrimination under any and all programs, services, or activities administered by ODOT, its recipients, sub-recipients, and contractors. To request an accommodation please contact the ADA Coordinator at 405-521-4140 or the Oklahoma Relay Service at 1-800-722-0353, no later than 72 hours before any scheduled event. If you have any ADA or Title VI questions email ODOT-ada-titlevi@odot.org.

"The mission of the Oklahoma Department of Transportation is to provide a safe, economical, and effective transportation network for the people, commerce, and communities of Oklahoma."

AN EQUAL OPPORTUNITY EMPLOYER

INTERSECTION LOCATION



Project Background

There is currently no access to I-35 at SH-74 (Grant Street) in Purcell. Under existing conditions, emergency response to incidents on I-35 is delayed by the lack of access to I-35 between milepost 91 and 95. Secondly, the US-77 (North Green Avenue) directional interchange is missing the southbound I-35 connection.

ODOT and the City of Purcell have recently tasked a Consultant to look at alternatives for improving access at I-35 and SH-74 (Grant Street) in Purcell, while taking into consideration construction costs, right-of-way costs, and environmental constraints. A recent feasibility study completed for potential improvements resulted in the development of three alternatives. Following the feasibility study, ODOT and the City of Purcell entered an agreement to fund the project.

The purpose of this project is to improve emergency vehicle access and reduce incident response times by providing additional access to I-35 at SH-74 (Grant Street) in Purcell, Oklahoma. Additional access to I-35 at SH-74 (Grant Street) will improve system connectivity, accessibility to the regional transportation network, and support the continued growth of the local community.

Alternatives

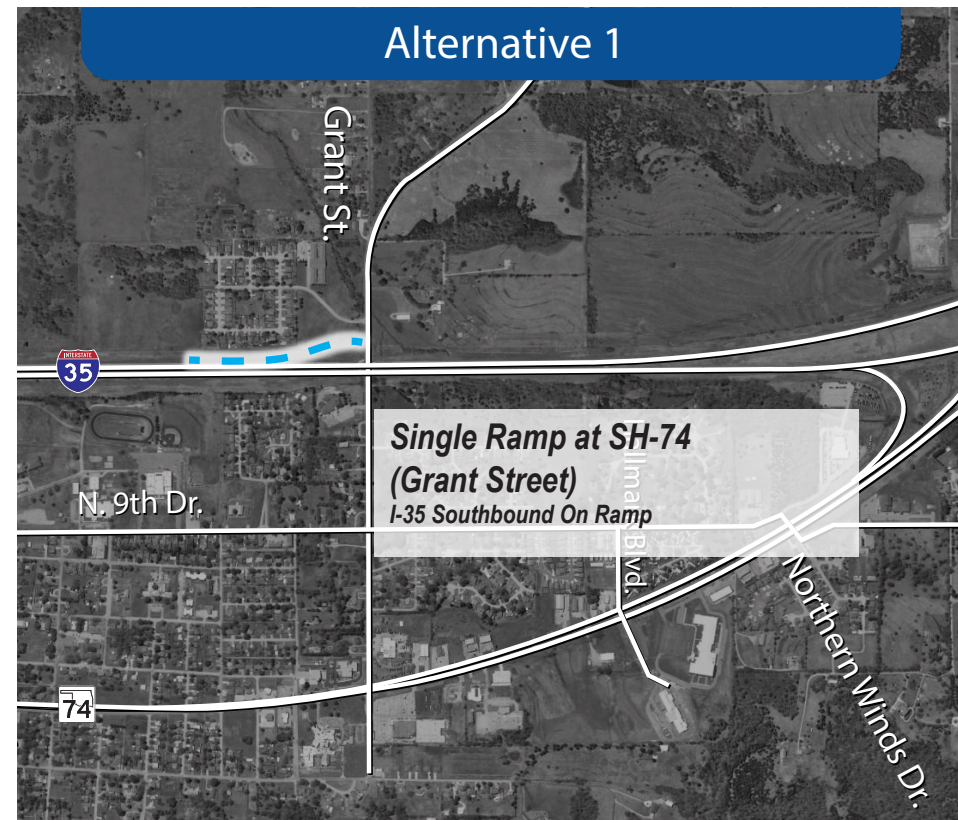
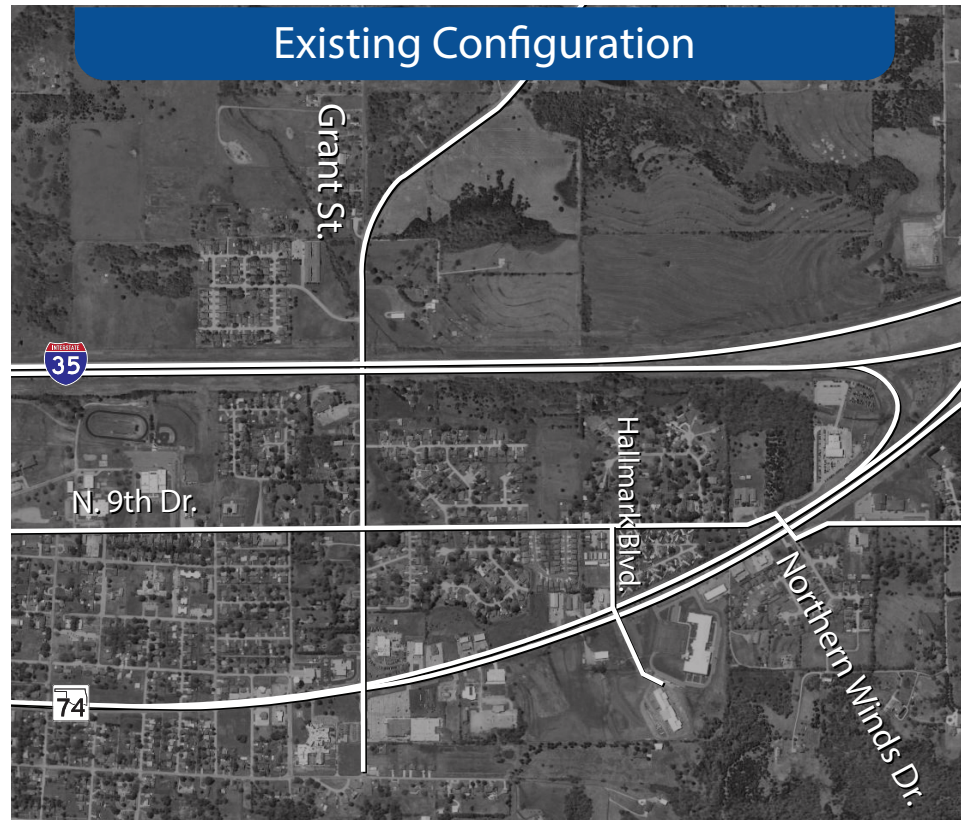
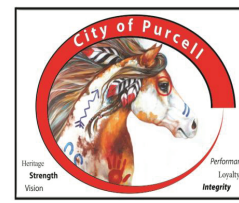
Based on the results of the feasibility study and in response to the purpose and need for this project three (3) alternatives were selected for further study and are shown in the accompanying graphic insert.

The alternatives are:

- **Alternative 1** – Would provide a single on-ramp from SH-74 (Grant St.) onto I-35 southbound.
- **Alternative 2*** – Half-diamond interchange to access Purcell at SH-74 by providing on-ramp access from SH-74 onto I-35 southbound and off-ramp access from I-35 northbound onto SH-74.
- **Alternative 3*** – Full diamond interchange to access Purcell at SH-74 by providing on-ramp access from SH-74 onto I-35 northbound and southbound and providing off-ramp access from I-35 northbound and southbound onto SH-74.

*Note: Alternatives 2 and 3 include an option to remove the northbound I-35 off-ramp at North Green Ave.

Representation of the alternatives for the
I-35 at SH-74 (Grant Street) Interchange
McClain County, JP 32802(04)



Legend

- - - I-35 Southbound On-Ramp
- I-35 Northbound On-Ramp
- - - I-35 Southbound Off-Ramp
- I-35 Northbound Off-Ramp
- ⊙ I-35 Bridge Replacement
- ⋯ SH-74 (Grant St.) Reconstruction
- ⋯ Optional Removal of Existing I-35 Exit Ramp at North Green Ave.

