

PROJECT LOCATION



PROJECT INFORMATION SUMMARY

- **Right-of-Way & Utility Location Start:** Fall 2021
- **Construction Start:** FY 2026*
- **Current Annual Average Daily Traffic (AADT) in year 2021:** 4,100 Vehicles Per Day (VPD)
- **Future Estimated AADT by year 2042:** 5,700 VPD

*Construction start date is subject to funding.

DISTRICT 1 ENGINEER: CHRIS WALLACE, P.E.

*Totals DO NOT include Toll Roads

**Totals DO NOT include County Bridges

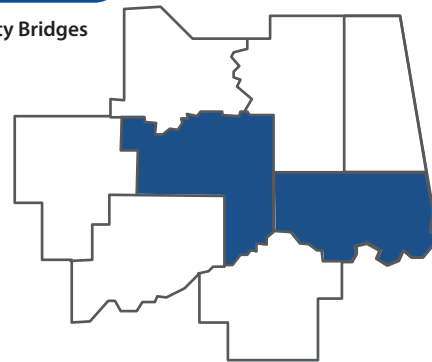
***Total Road Miles**
1,110.70

***Total Interstate Miles**
97.31

****Total Bridges**
704

COUNTIES

Adair, Cherokee, Haskell, McIntosh, **Muskogee**, Okmulgee, **Sequoyah**, Wagoner



PLEASE PROVIDE YOUR COMMENTS BY **FEB. 26, 2021**

For more information about the project:

(405) 325-3269
environment@odot.org

<http://www.odot.org/publicmeetings>



VIRTUAL OPEN HOUSE

FEB. 12, 2021 - FEB. 26, 2021

SH-100 Bridge over the Arkansas River
Muskogee/Sequoyah Counties; JP 32100(04)

www.odot.org/SH100ArkansasRiver

VIRTUAL OPEN HOUSE

The Oklahoma Department of Transportation will host a virtual open house to present the proposed improvements to the SH-100 bridge over the Arkansas River at the Muskogee/Sequoyah county line. This open house will present the design for the project and allow the public to submit input. Due to concerns over the spread of COVID-19, this will be a web-based format (no in-person meeting). The information will be available beginning Friday, Feb. 12, 2021, and comments are requested by Friday, Feb. 26, 2021.

Purpose

The purpose of the Virtual Open House is to present information about the proposed improvements to the SH-100 bridge over the Arkansas River and obtain information from the public to further assist in the identification of critical social, economic, and environmental effects that may result from the project.

Join

www.odot.org/SH100ArkansasRiver



OKLAHOMA
Transportation

February 9, 2021

Dear Stakeholders, Property Owners and Utility Owners:

RE: SH-100: Bridge over the Arkansas River at the Muskogee/Sequoyah County line, Muskogee County, ODOT Job Piece 32100(04), Project J3-2100(004)PM

The Oklahoma Department of Transportation (ODOT), in cooperation with the Federal Highway Administration (FHWA), is proposing to correct the narrow bridge on SH-100 over the Arkansas River. The existing bridge is considered narrow with 11 ft. wide driving lanes and 3 ft. wide shoulders. The existing bridge is also at-risk of becoming structurally deficient. The purpose of the project is to improve safety by addressing the narrow width and structural deficiencies of the existing bridge.

The improvements would replace the SH-100 bridge with a new bridge on the existing alignment. The new bridge would be 40 ft. wide, consisting of two 12 ft. wide driving lanes with 8 ft. wide shoulders. The bridge would be closed to traffic during construction with an estimated closure duration of 24 months with incentives to reduce the closure time. Highway traffic would be detoured to I-40 and SH-10 during the closure period.

Due to ongoing concerns about COVID-19, ODOT will host a virtual open house from **February 12 to February 26, 2021**. The purpose of the open house is to present information about the project and obtain input from the public to further assist in the identification of critical social, economic and environmental effects that may result from the project. This pamphlet contains additional information about the virtual public open house. After the virtual public open house, project information may be viewed at www.odot.org/publicmeetings.

If you are leasing this property, please notify your lessee of this virtual public open house. Should you have any questions or would like additional information regarding this project, please email environment@odot.org, or call 405-325-3269 and leave a detailed message.

Respectfully,

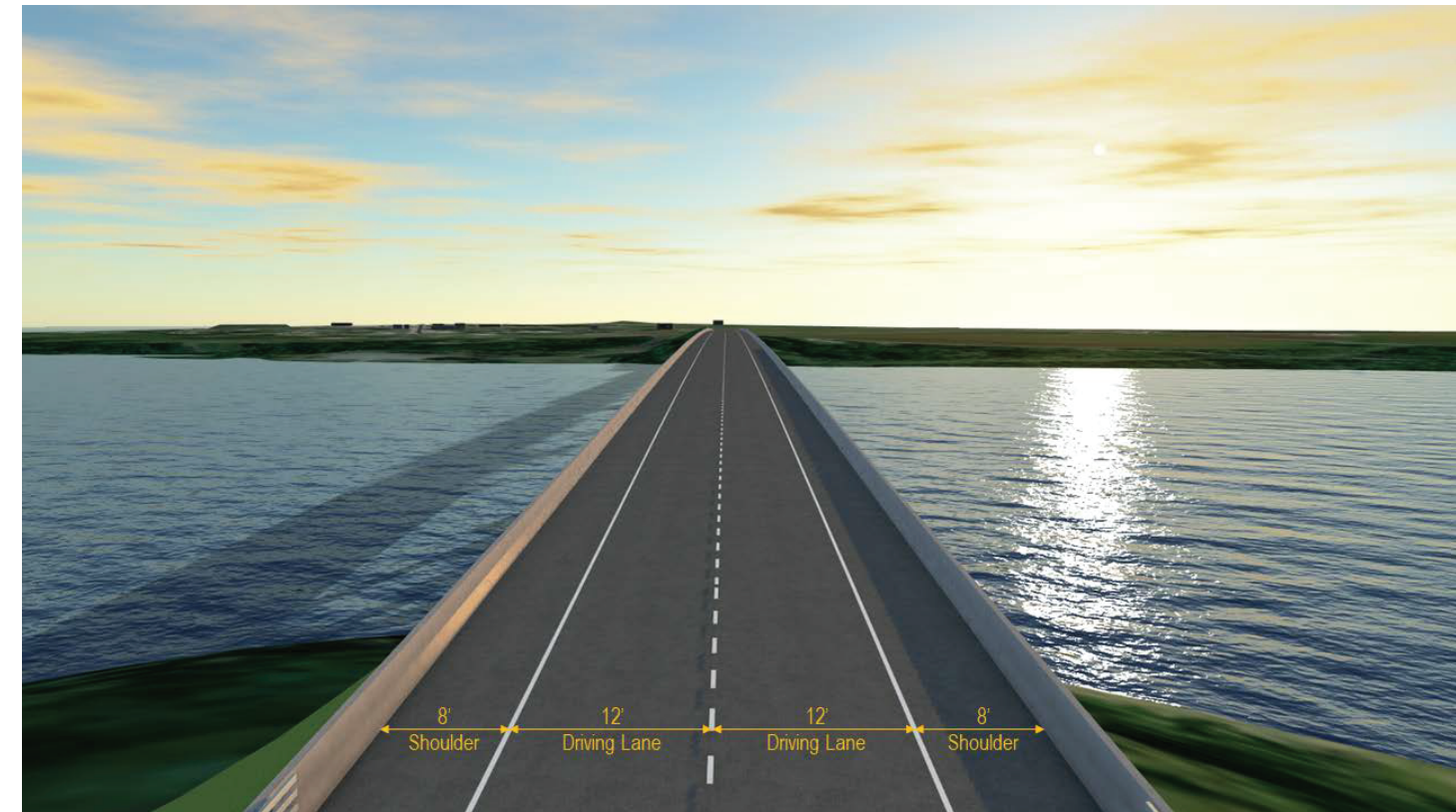
Siv Sundaram

Siv Sundaram, P.E.
Environmental Programs Division Engineer

The Oklahoma Department of Transportation (ODOT) ensures that no person or groups of persons shall, on the grounds of race, color, sex, religion, national origin, age, disability, retaliation or genetic information, be excluded from participation in, be denied the benefits of, or be otherwise subjected to discrimination under any and all programs, services, or activities administered by ODOT, its recipients, sub-recipients, and contractors. To request an accommodation please contact the ADA Coordinator at 405-521-4140 or the Oklahoma Relay Service at 1-800-722-0353, no later than 72 hours before any scheduled event. If you have any ADA or Title VI questions email ODOT-ada-titlevi@odot.org.

"The mission of the Oklahoma Department of Transportation is to provide a safe, economical, and effective transportation network for the people, commerce, and communities of Oklahoma."

AN EQUAL OPPORTUNITY EMPLOYER



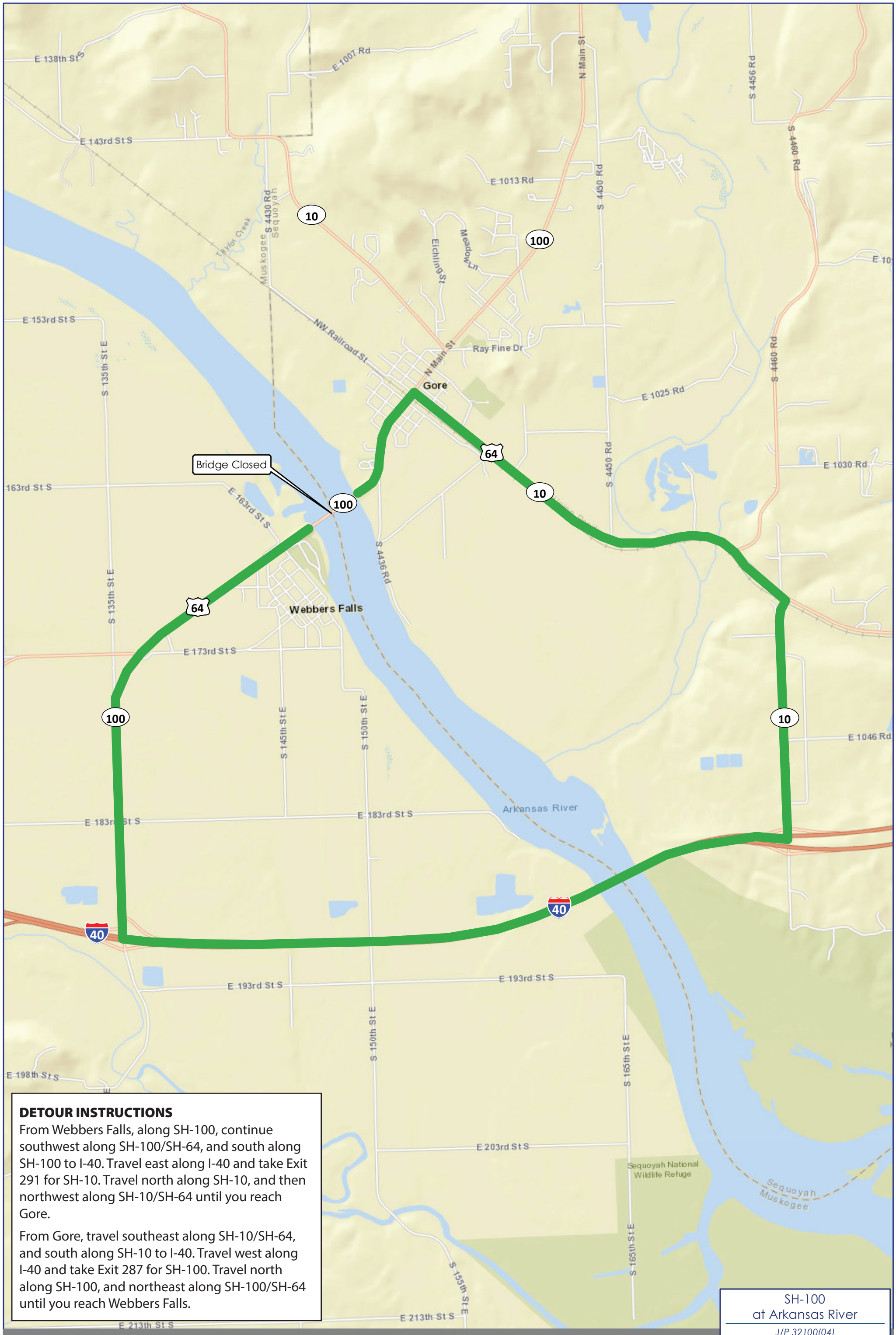
Project Background

The existing SH-100 bridge over the Arkansas River was built in 1969. The existing bridge is considered narrow with 11 ft. wide driving lanes and 3 ft. wide shoulders. The SH-100 bridge is also considered at-risk of becoming structurally deficient.

Project Description

The proposed improvements include replacing the SH-100 bridge with a new bridge on the existing alignment. The new bridge would be 40 ft. wide, consisting of two 12 ft. wide driving lanes with 8 ft. wide shoulders. The new bridge would be constructed within the existing right-of-way.

The bridge would be closed to traffic during construction with an estimated closure duration of 24 months with incentives to reduce the closure time. Highway traffic would be detoured to I-40 and SH-10 during the bridge closure. The enclosed map shows the proposed detour route.




Bridge Closed

DETOUR INSTRUCTIONS
 From Webbers Falls, along SH-100, continue southwest along SH-100/SH-64, and south along SH-100 to I-40. Travel east along I-40 and take Exit 291 for SH-10. Travel north along SH-10, and then northwest along SH-10/SH-64 until you reach Gore.
 From Gore, travel southeast along SH-10/SH-64, and south along SH-10 to I-40. Travel west along I-40 and take Exit 287 for SH-100. Travel north along SH-100, and northeast along SH-100/SH-64 until you reach Webbers Falls.

 Proposed Detour Route (11.8 miles)



1 inch = 0.5 miles
 Miles
 0 0.25 0.5

SH-100
 at Arkansas River
 J/P 32100(04)
Muskogee County 
Proposed Detour Map