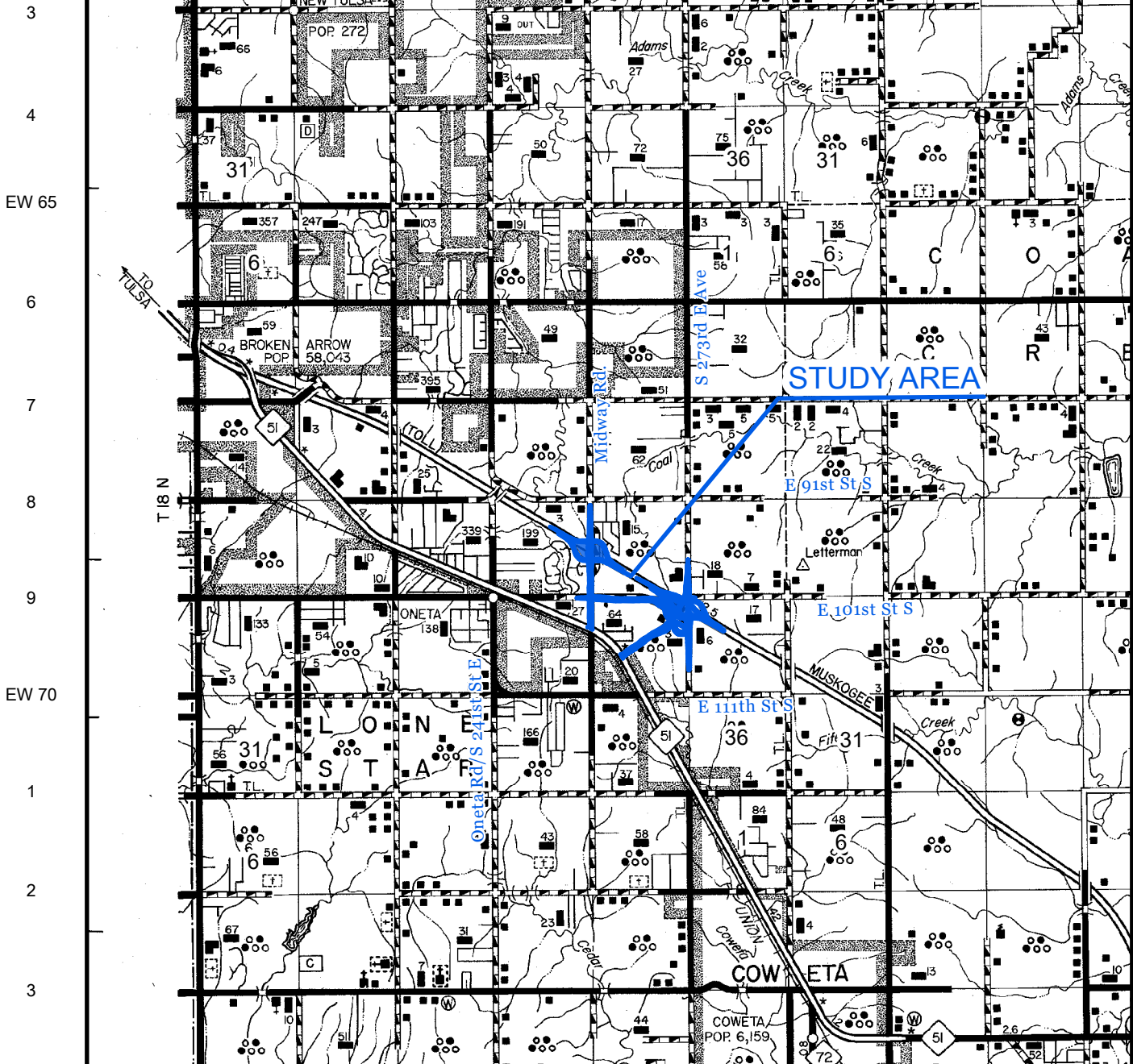


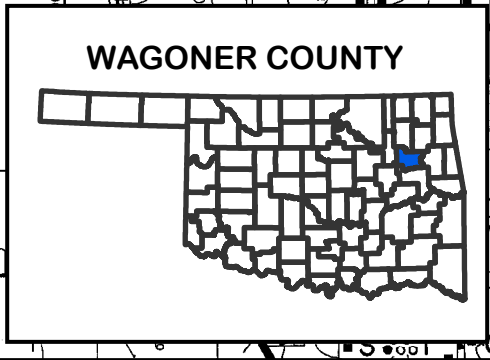
7 8 9 NS 410 1 2 3 4 NS 445 6



EW 65

EW 70

EW 75



WAGONER COUNTY

WAGONER COUNTY - SH-51
J/P NO. 33806(04)
LOCATION MAP



OKLAHOMA
 DEPARTMENT OF TRANSPORTATION

ALIGNMENT STUDY FOR NEW INTERCHANGE LOCATION
 AT MUSKOGEE TURNPIKE (SH-351) TO SH-51
 BETWEEN ONETA RD AND S 273RD E AVE



R 15 E

R 16 E