



I-44/US-75 Interchange Reconstruction

ACCESS How Will Access Change?

[◀ Homepage](#)

[What are the Environmental Impacts?▶](#)

The following describes the **permanent** changes to access as a result of the project. **Temporary** changes to access during construction will be presented at later public meetings as each Work Package nears construction.

Along I-44, the proposed improvements include the removal of four existing access ramps either to or from W. 51st Street or W. Skelly Drive. Each ramp is labeled (A, B, C, and D) in the images below.

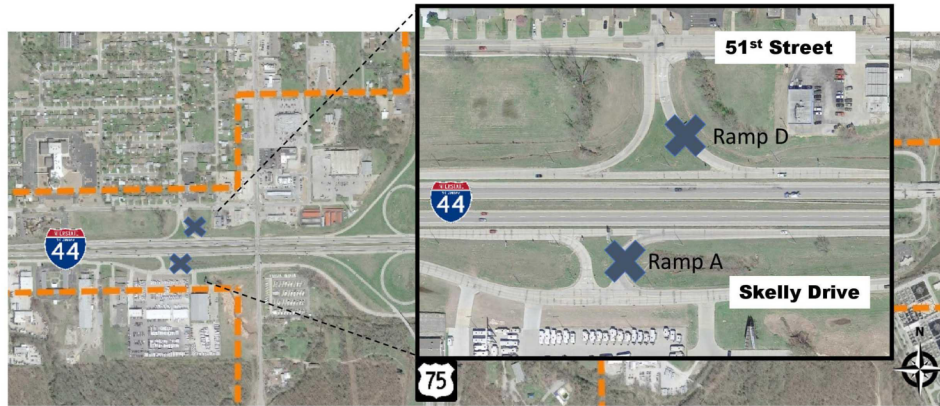
- Removal – The I-44 eastbound (EB) on-ramp from W. Skelly Drive, just west of the intersection of Union Avenue (Ramp A).
- Removal – The W. Skelly Drive EB off ramp from I-44 just west of the Arkansas River bridge (Ramp B).
- Removal – The I-44 westbound (WB) on ramp from W. 51st Street, just west of the Arkansas River bridge (Ramp C).
- Removal – The W. 51st Street WB off ramp from I-44 just west of Union Avenue (Ramp D).

Ramp Removals

Please click on the images below to zoom in.

- **Modified Access for Improved Mainline Traffic Flow**

- ✘ (2) Exit Ramps Removed at (WB I-44 to Union/51, EB I-44 to Skelly)
- ✘ (2) Entrance Ramps Removed at (Union/51 to EB I-44, 51st to WB I-44)



- **Modified Access for Improved Mainline Traffic Flow**

- ✘ (2) Exit Ramps Removed at (WB I-44 to Union/51, EB I-44 to Skelly)
- ✘ (2) Entrance Ramps Removed at (Union/51 to EB I-44, 51st to WB I-44)



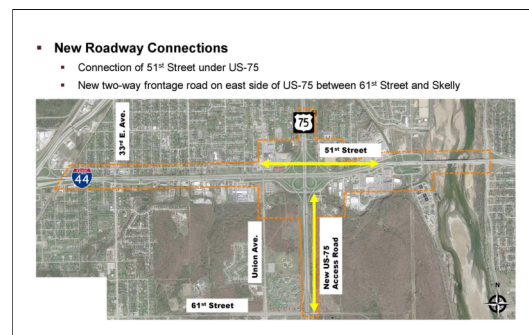
Some additional changes in access and travel patterns will be the result of two newly constructed roadways, one along the north side of I-44 on W. 51st Street, and one along the east side of US-75 between W. 61st Street and W. Skelly Drive.

- New Construction – A new segment W. 51st Street will be constructed underneath a new US-75 bridge to reconnect the eastern and western portions of this arterial city street.

- New Construction – The US-75 interchange with W. 61st Street will be reconstructed with the addition of a new two-way frontage road east of and along US-75 from W. 61st Street, extending north to W. Skelly Drive, including a NB US-75 on ramp from the frontage road.
- New Construction – Three directional interchange ramps which will incorporate the WB I-44 to SB US-75, NB US-75 to WB I-44, and SB US-75 to EB I-44 movements.

New Roadway Connections

Please click on the image below to zoom in.



Overall, there will be several changes to access and travel patterns as a result of this project. The primary reason for these changes is for the safety of the traveling public, and to improve the functionality of the interchange and the adjacent local roads.

The proposed access will provide for all traffic movements as well as provide pedestrian accommodations on arterial segments. The proposed access will be designed to meet or exceed current standards.

The ultimate design will streamline ramp access to the local roads at the US-75 interchange to minimize conflict points and provide better traffic flow. Access to businesses will still be accommodated by extending W. 51st Street across the north side of the US-75 interchange and constructing a connector road from W. Skelly Drive to W. 61st Street. With the proposed updates to the corridor and new ramp configuration, new freeway guide signage is proposed.

I-44/US-75 INTERCHANGE RECONSTRUCTION

[I-44/US-75 Interchange
Reconstruction in Tulsa Co.](#)

[Sign In & Handout](#)

[What is the History of the
Project?](#)

[Why are we Building this Project?](#)

[What is Being Built?](#)

[What if my Property is Affected?](#)

[How Will Access Change?](#)

[What are the Environmental
Impacts?](#)

[What are the Noise Impacts?](#)

[I-44 Corridor Noise Exhibits](#)

[US-75 Corridor Noise Exhibits](#)

[When will the Projects be Built?](#)

[What will the Projects Cost?](#)

[Frequently Asked Questions](#)

[How do I Give Feedback?](#)

[Work Package 2](#)

[Work Package 3](#)

[Work Package 4](#)

[Work Package 5](#)