

WELCOME

PUBLIC MEETING

Sign in to register your attendance.

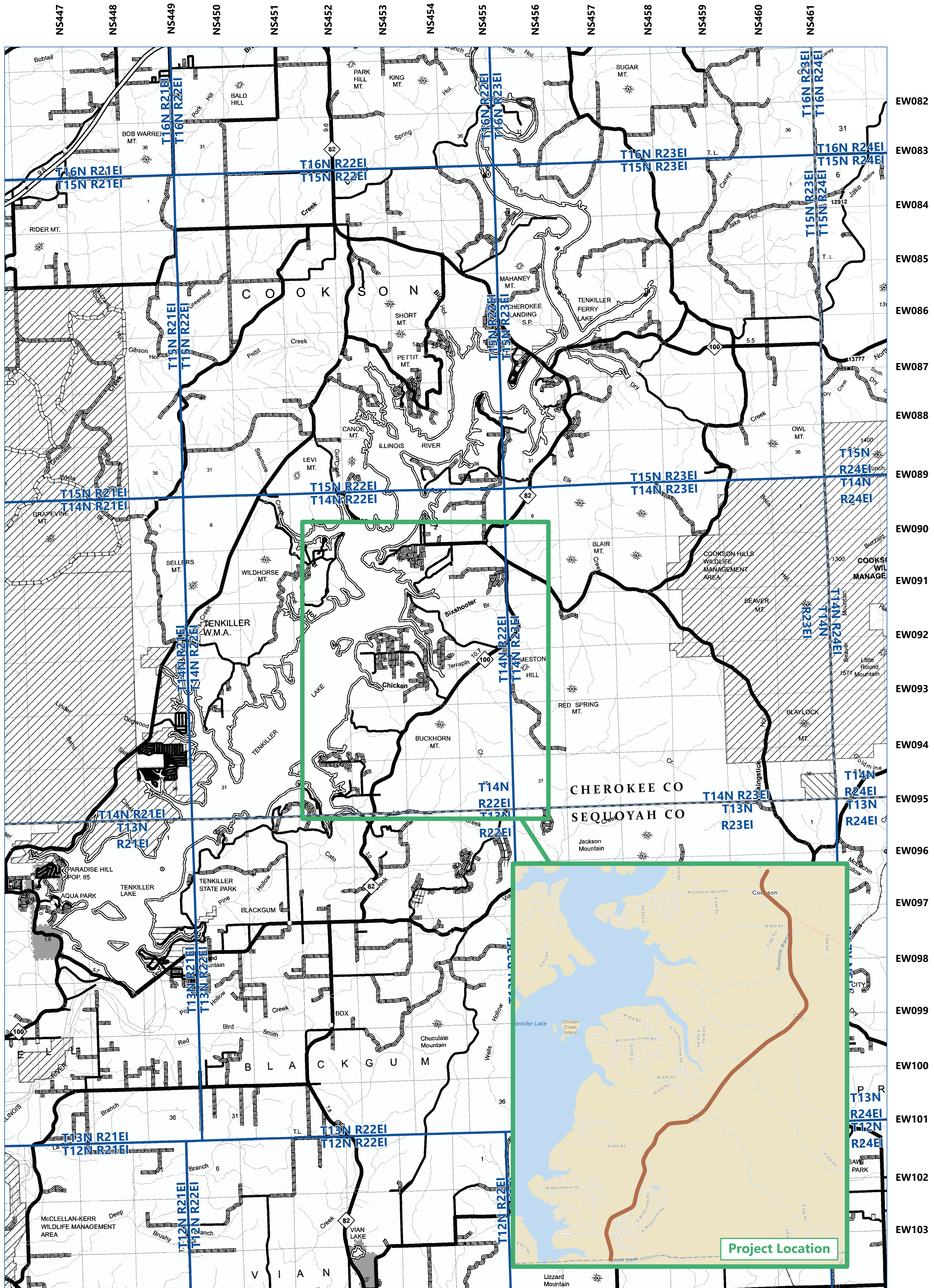
Share your comments by Tuesday, July 5, 2022.



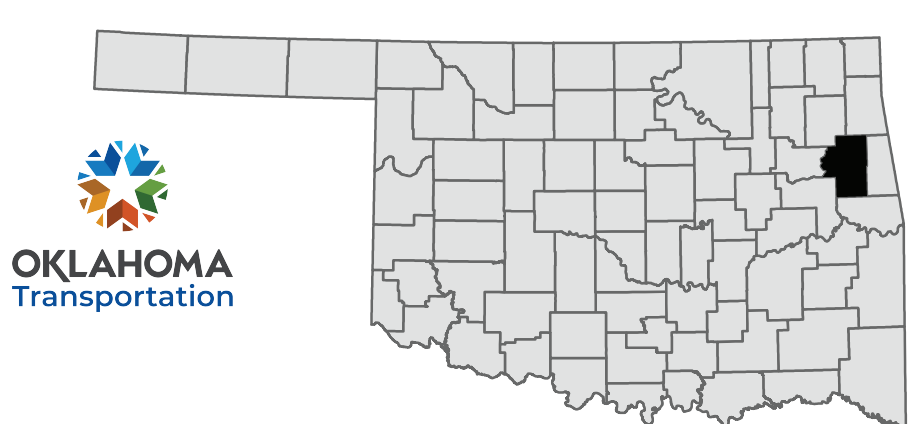
OKLAHOMA
Transportation



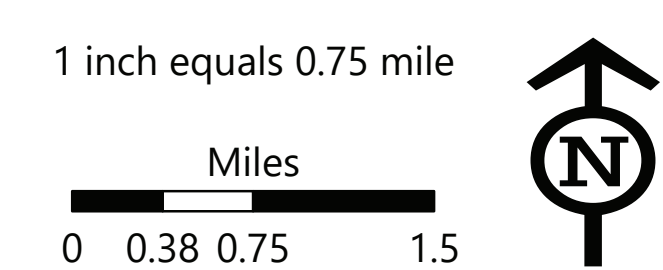
Project Location



SH-82
From Approximately 500' North
of Sequoyah County Line,
North 6.7 Miles
CHEROKEE COUNTY
JP No. 32825(04)



- Project Location
- Proposed SH-82
- Township & Range Boundary





Environmental Considerations



TRIBAL CONSULTATION

- ODOT consulted with six tribes for input:
 - Caddo Nation
 - Cherokee Nation
 - Osage Nation
 - Seneca-Cayuga Nation
 - United Keetoowah Band of Cherokees
 - Wichita & Affiliated Tribes



CULTURAL RESOURCES

- A Cultural Resources study is being completed and concluded that no significant resources were identified in the project area.
- Consultation with the State Historic Preservation Office and State Archaeologist is being conducted to obtain concurrence with the findings.



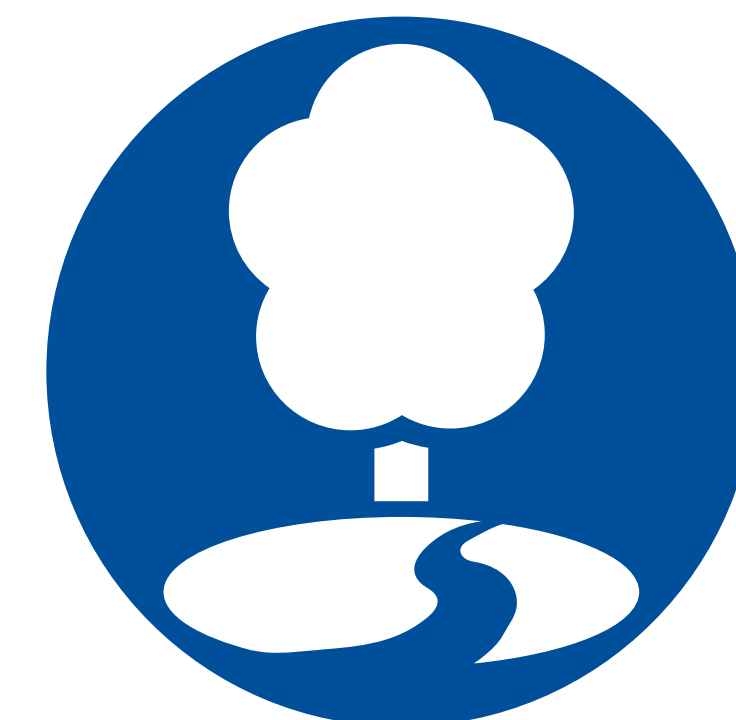
ENVIRONMENTAL JUSTICE

- Environmental Justice (EJ) communities are identified as areas containing predominantly minority populations and/or low-income populations.
- All of the census blocks adjacent to the project exceed the state average of 39.2 percent minority population.
- Only 0.5 percent of the population within the census block groups is identified as speaking English less than "very well".



HAZARDOUS MATERIALS

- A Hazardous Waste Assessment revealed three low-risk sites.
- ODOT specialists will review plans and determine whether additional investigations are necessary.



STREAMS & WETLANDS

- One pond, seven streams, and one drainage channel are present. The seven streams are anticipated to be jurisdictional.
- Construction activities will be evaluated to ensure appropriate U.S. Army Corps of Engineers Clean Water Act 404 application is made.



THREATENED & ENDANGERED SPECIES

- Potential habitat for American Burying Beetle, Gray Bat, Indiana Bat, Ozark Big-eared Bat, and Northern Long-eared Bat.
- Consultation with the United States Fish and Wildlife Service (USFWS) was conducted.
- Measures to minimize potential impacts to habitat and species will be added to project plans.
- Migratory bird and Bald Eagle nest surveys will be performed.



RELOCATIONS

- The project will not require any residential or commercial relocations.
- All right-of-way acquisition will be in accordance with the Uniform Relocation Assistance and Real Properties Acquisitions Policies Act of 1970, as amended.



FLOODPLAINS

- Federal Emergency Management Agency (FEMA) maps floodplains of major streams and rivers.
- There is mapped 100-year floodplain (Zone A) at one location within the study area. There is no 100-year floodplain with base flood elevations (Zone AE).



Submit Feedback

HOW TO COMMENT

To be documented and considered as part of the SH-82 Widen and Resurface project Public Meeting, provide your comments using any of the methods below by **Tuesday, July 5, 2022**.



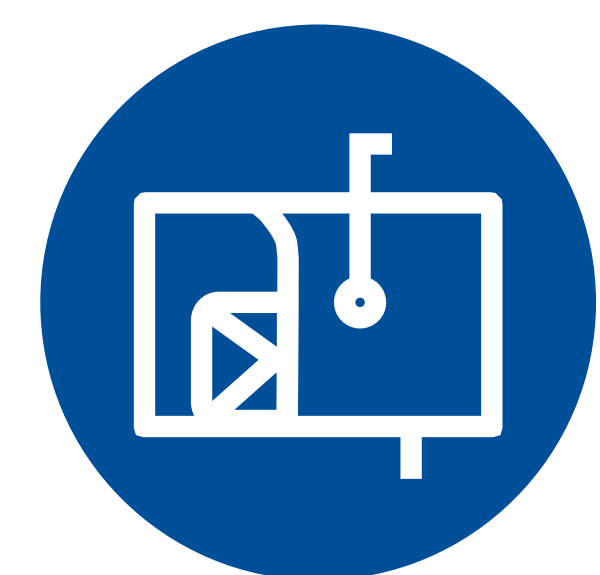
IN PERSON

Fill out a comment form at today's meeting



VOICEMAIL

Leave a voicemail at 405.325.3269



MAIL

Environmental Programs Division
Oklahoma Department of Transportation
200 N.E. 21st St.
Oklahoma City, OK, 73105



EMAIL

environment@odot.org