



OKLAHOMA Transportation

Contract Identification No. 2342
Preparation of Construction Plans
(Grade, Drain, Bridge and Surface)

McCurtain County



AGENDA

US-259

- **BACKGROUND**
- **EXISTING CONDITIONS**
- **PROJECT GOALS**
- **INTERIM IMPROVEMENTS**
- **TRAFFIC VOLUMES**
- **LEVEL OF SERVICE & ANALYSIS**
- **NEXT STEPS**
- **COMMENT METHODS**
- **BREAKOUT SESSIONS**



Beavers Bend
State Park
Lakeview Lodge
Stevens Gap Area

BACKGROUND

US-259

VARIED IDENTITY

GLOBAL SAFETY & ACCESS

LIMITED R/W – FUTURE NEEDS

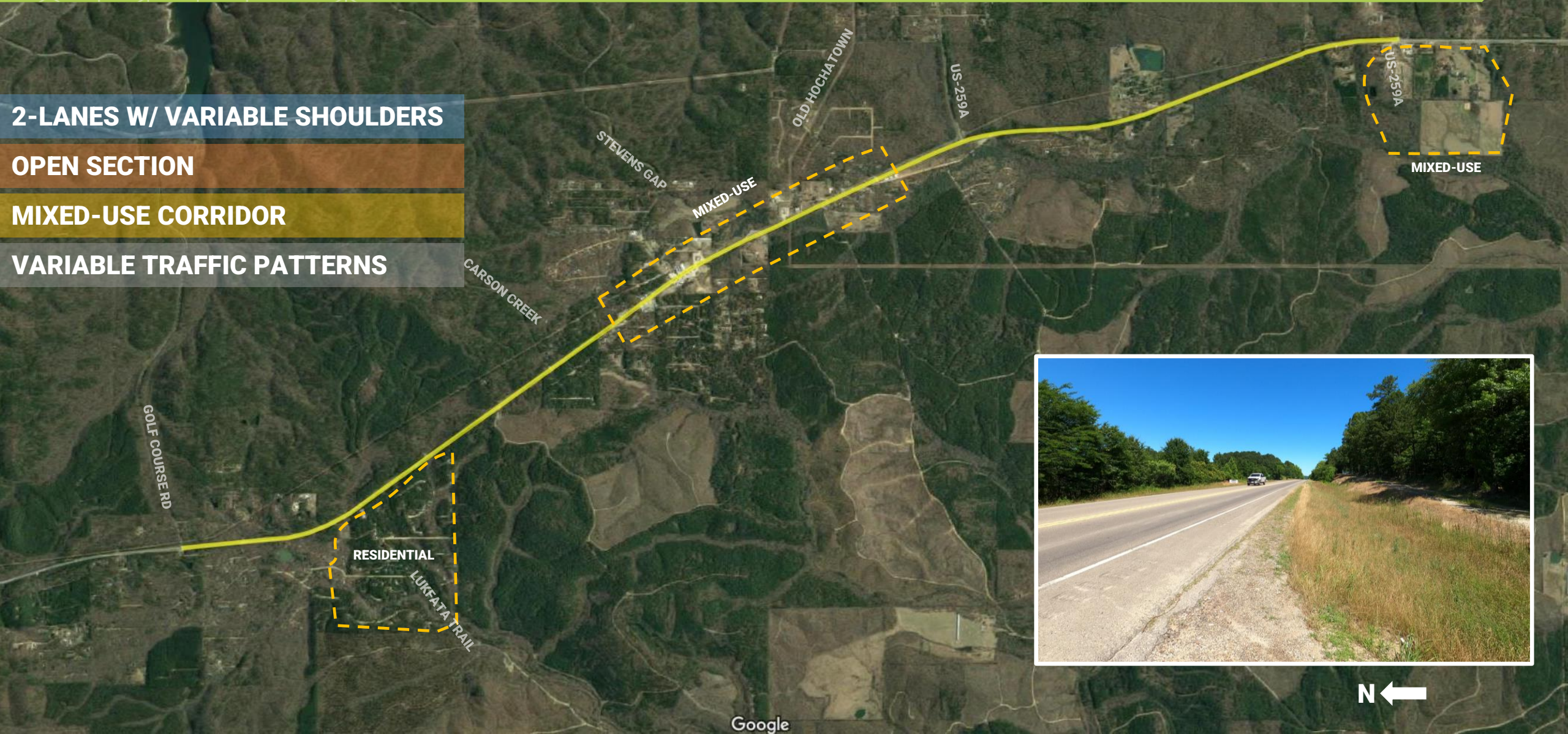
SHORT & LONG TERM GOALS



EXISTING CONDITIONS

US-259

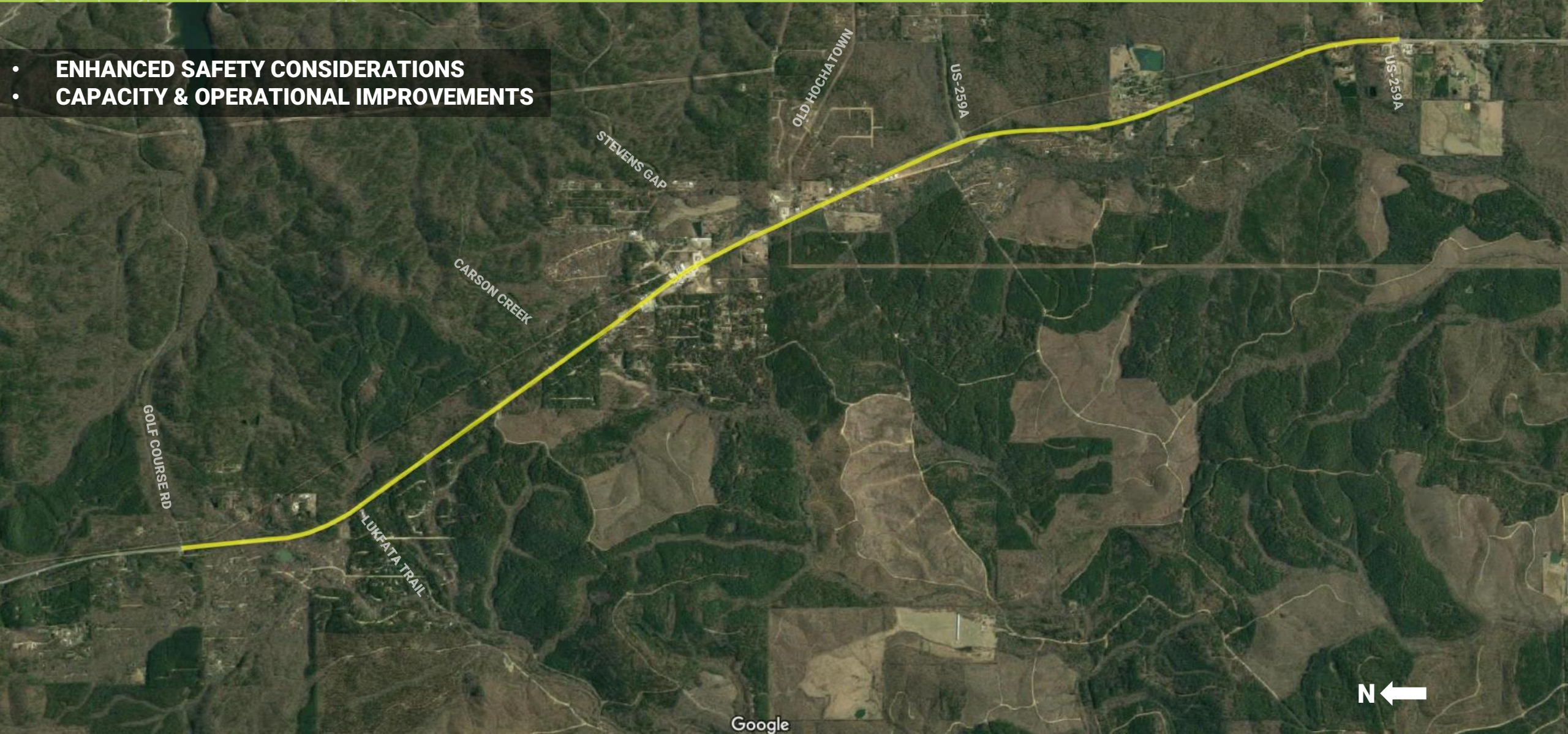
- 2-LANES W/ VARIABLE SHOULDERS
- OPEN SECTION
- MIXED-USE CORRIDOR
- VARIABLE TRAFFIC PATTERNS



PROJECT GOALS

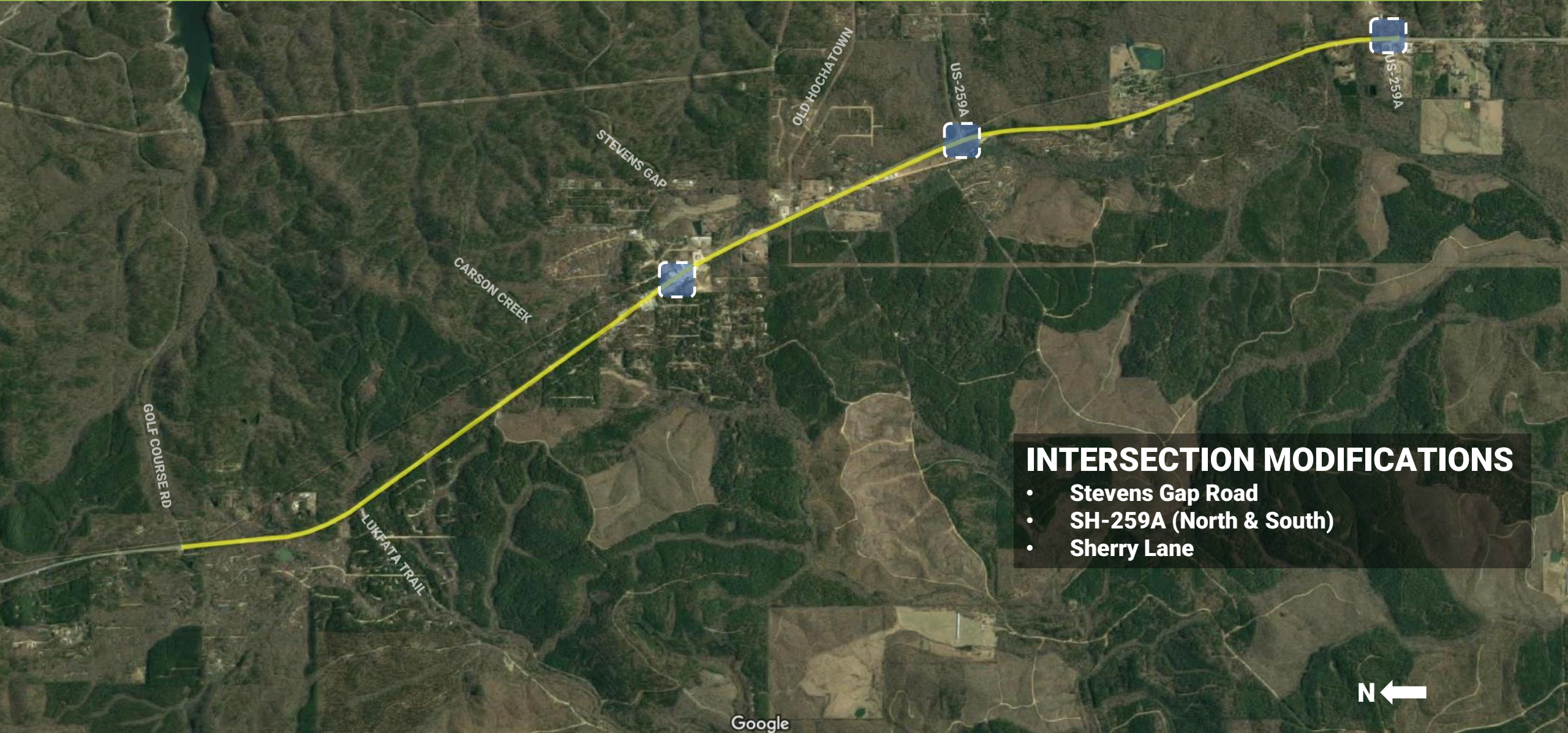
US-259

- ENHANCED SAFETY CONSIDERATIONS
- CAPACITY & OPERATIONAL IMPROVEMENTS



INTERIM IMPROVEMENTS

US-259

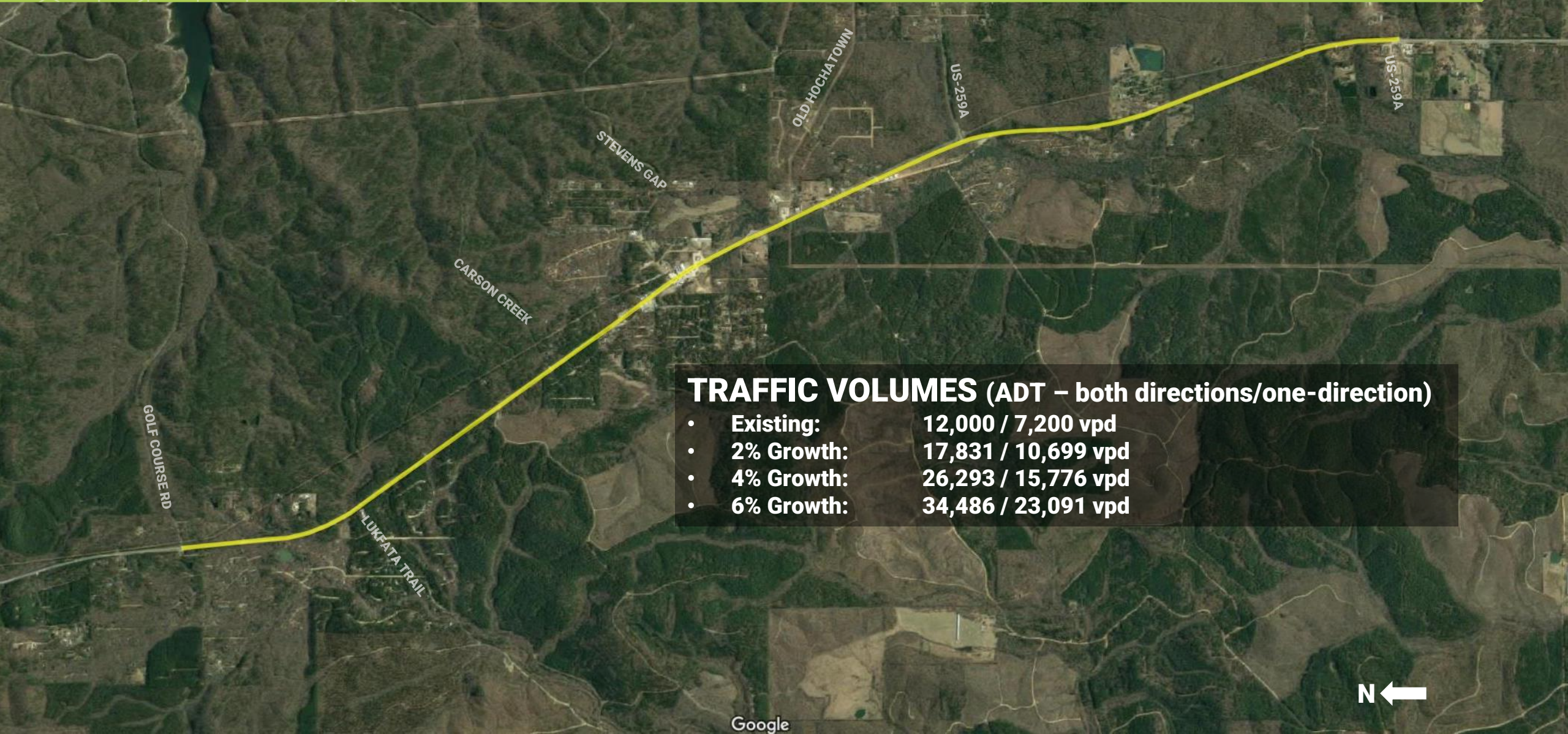


INTERSECTION MODIFICATIONS

- Stevens Gap Road
- SH-259A (North & South)
- Sherry Lane

TRAFFIC VOLUME

US-259



TRAFFIC VOLUMES (ADT – both directions/one-direction)

- Existing: 12,000 / 7,200 vpd
- 2% Growth: 17,831 / 10,699 vpd
- 4% Growth: 26,293 / 15,776 vpd
- 6% Growth: 34,486 / 23,091 vpd

LEVEL OF SERVICE (LOS)

US-259



TRAFFIC VOLUME ANALYSIS

US-259

3 LANES - 1 LANE EACH DIRECTION							
Roadway	Directional Volume (vpd - 2042)			V/C & LOS - Growth Scenario			
	2%	4%	6%	2%	4%	6%	
US-259	10,699	15,776	23,091	1.19	F	2.57	F

4 OR 5 LANES - 2 LANES EACH DIRECTION							
Roadway	Directional Volume (vpd - 2042)			V/C & LOS - Growth Scenario			
	2%	4%	6%	2%	4%	6%	
US-259	10,699	15,776	23,091	0.60	C	1.29	F



NEXT STEPS

US-259



**RECEIVE COMMENTS
FROM PUBLIC**



**DETERMINE FINAL
CONFIGURATION AND NOTIFY
PUBLIC**



**FINAL DESIGN &
CONSTRUCTION**

COMMENT METHODS

US-259



In Person:

Fill out a comment form at today's meeting



Email:

environment@odot.org



Voicemail:

405-325-3269



Mail:

Environmental Programs Division
Oklahoma Department of Transportation
200 N.E. 21st St.
Oklahoma City, OK 73105-3204

BREAKOUT SESSIONS

US-259

- 1. NORTH SECTION
- 2. MIDDLE SECTION
- 3. SOUTH SECTION

