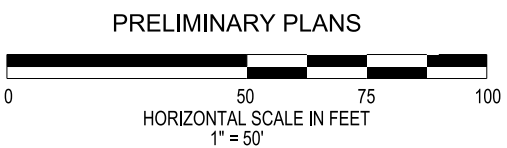


US-81 / S.4TH ST

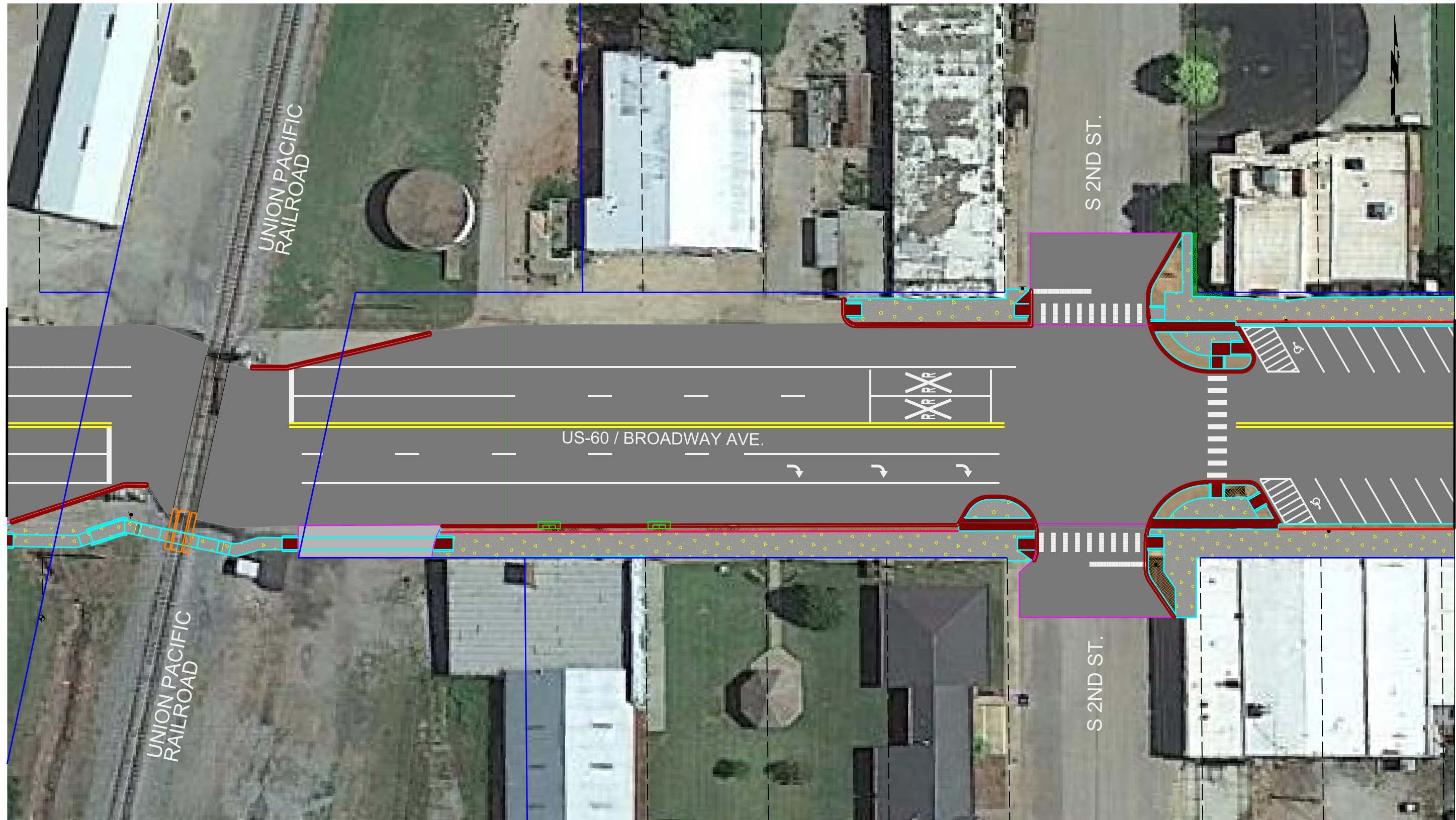
US-60 / BROADWAY AVE.

RR
RR
RR

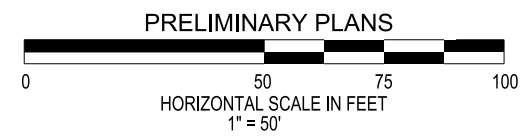
- PROPOSED COLD MILLING & ASPHALT OVERLAY
- CONCRETE DRIVEWAY CONSTRUCTION
- PROPOSED SIDEWALK
- PROPOSED ADA RAMP CURB & GUTTER
- PROPOSED SOD
- STAMPED CONCRETE
- PRESENT RIGHT-OF-WAY



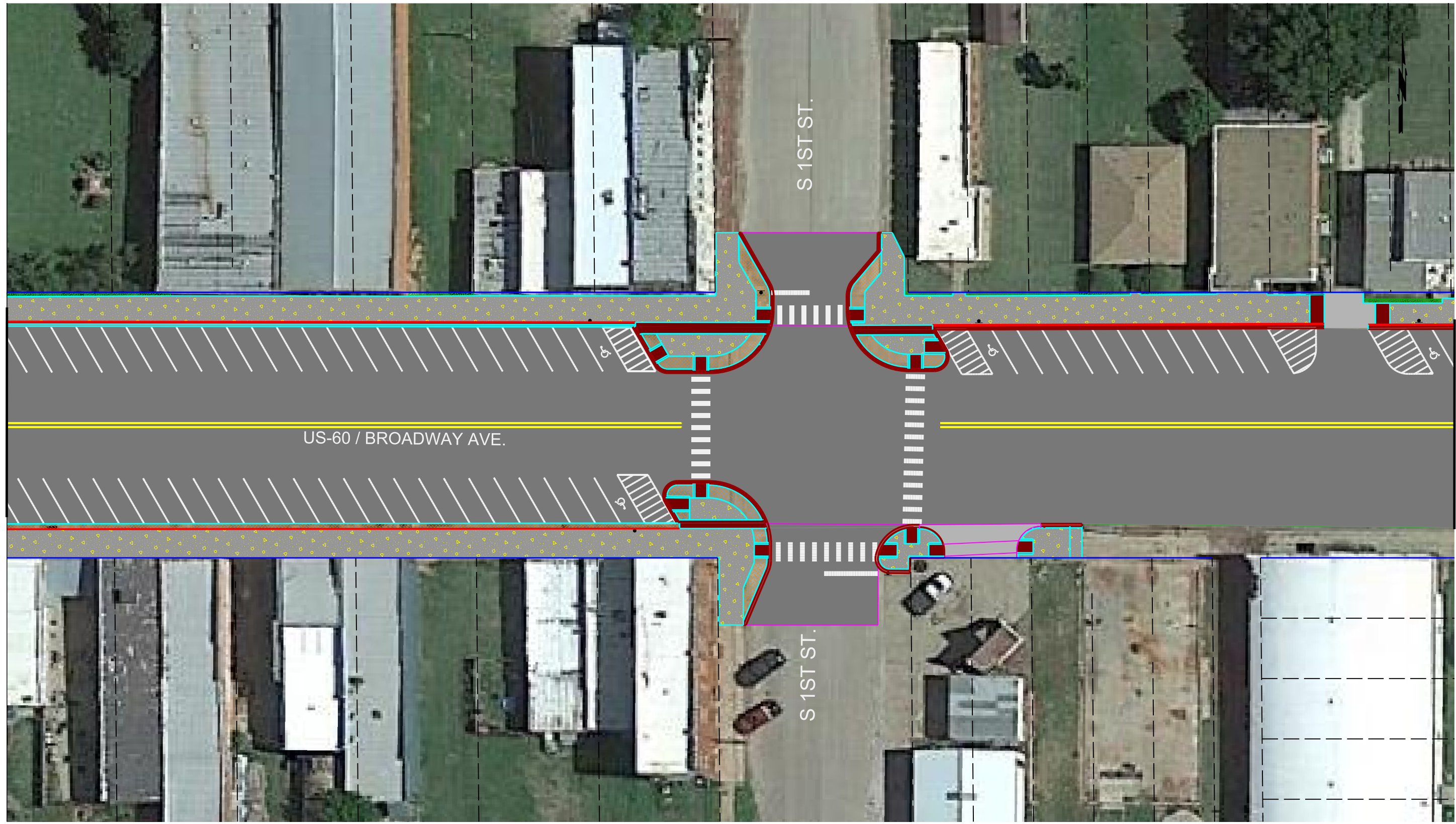
DESIGN		OKLAHOMA DEPARTMENT OF TRANSPORTATION US-60 (POND CREEK) ROADWAY IMPROVEMENTS PLAN SHEET 1
DRAWN		
CHECKED		
APPROVED		
SQUAD	ATKINS	
COUNTY GRANT HIGHWAY US-60 STATE JOB NO. 29838(07) SHEET NO. 01		



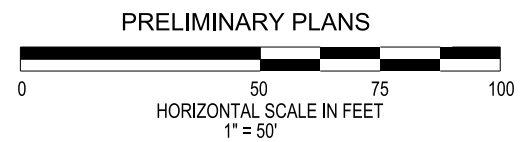
- PROPOSED COLD MILLING & ASPHALT OVERLAY
- CONCRETE DRIVEWAY CONSTRUCTION
- PROPOSED SIDEWALK
- PROPOSED ADA RAMP CURB & GUTTER
- PROPOSED SOD
- STAMPED CONCRETE
- PRESENT RIGHT-OF-WAY



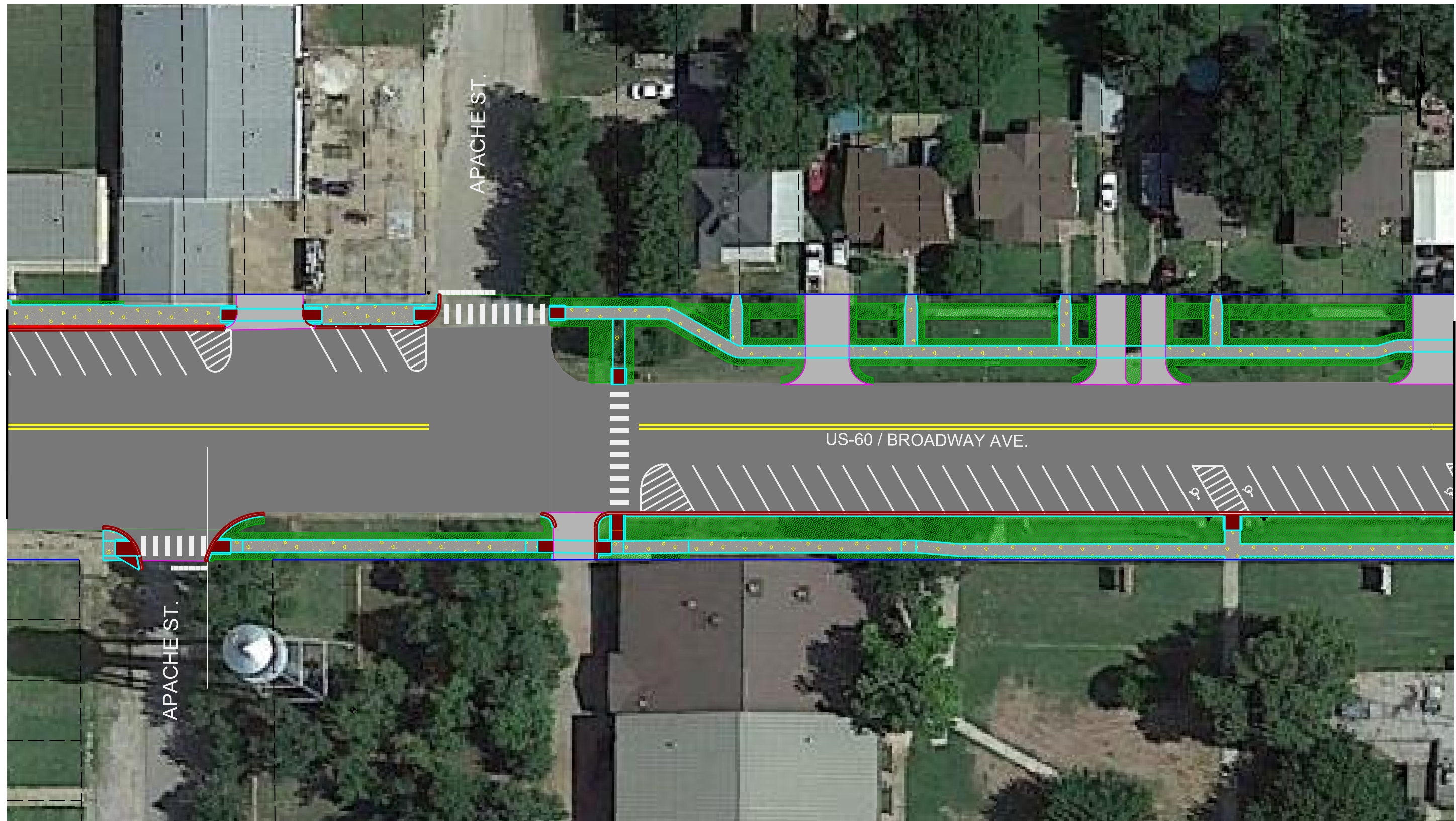
DESIGN		OKLAHOMA DEPARTMENT OF TRANSPORTATION US-60 (POND CREEK) ROADWAY IMPROVEMENTS PLAN SHEET 2					
DRAWN							
CHECKED							
APPROVED							
SQUAD	ATKINS						
COUNTY	GRANT	HIGHWAY	US-60	STATE JOB NO.	29838(07)	SHEET NO.	02



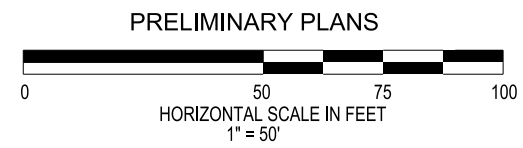
- PROPOSED COLD MILLING & ASPHALT OVERLAY
- CONCRETE DRIVEWAY CONSTRUCTION
- PROPOSED SIDEWALK
- PROPOSED ADA RAMP CURB & GUTTER
- PROPOSED SOD
- STAMPED CONCRETE
- PRESENT RIGHT-OF-WAY



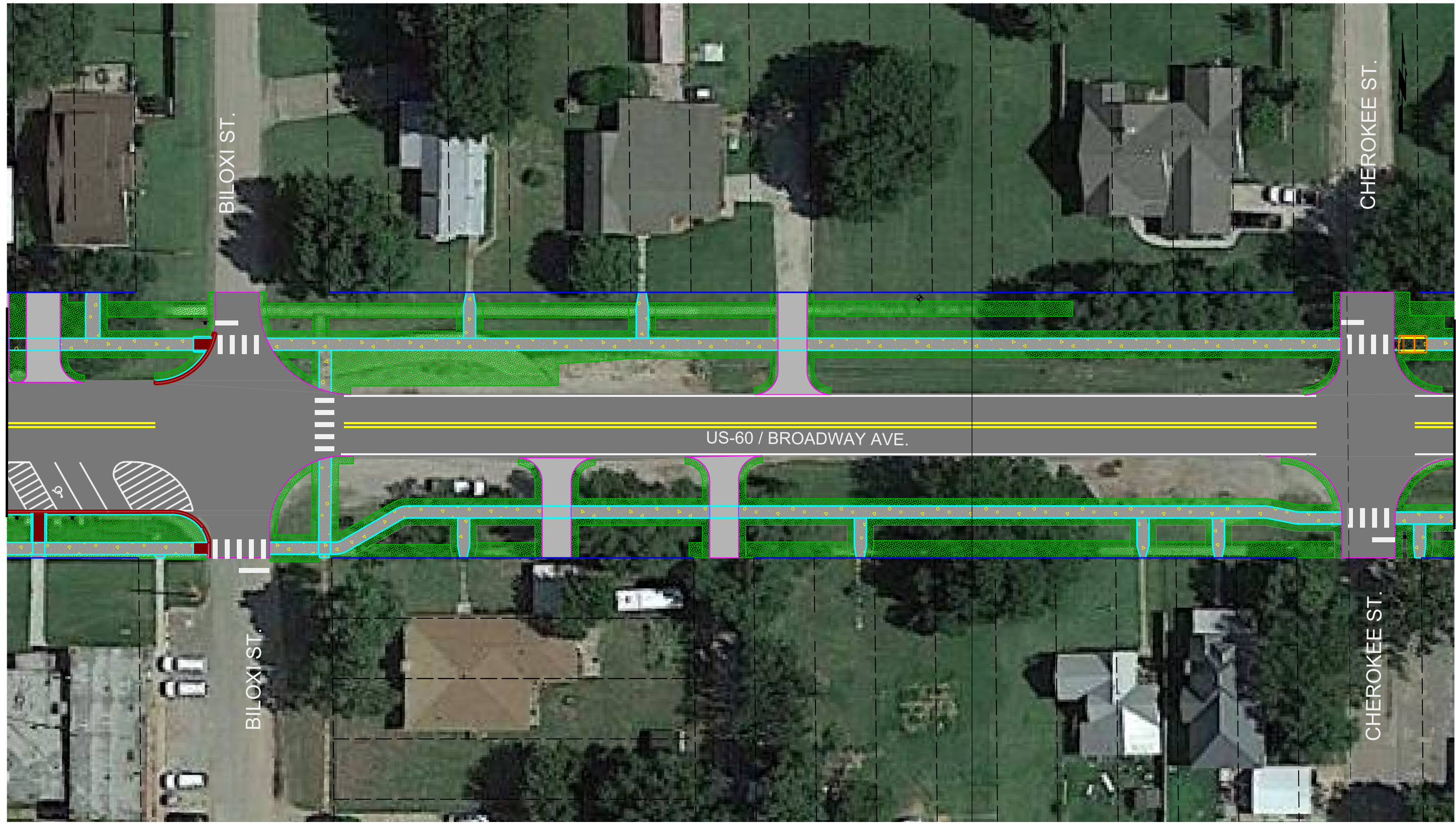
DESIGN		OKLAHOMA DEPARTMENT OF TRANSPORTATION	
DRAWN		US-60 (POND CREEK) ROADWAY IMPROVEMENTS PLAN SHEET 3	
CHECKED			
APPROVED			
SQUAD	ATKINS		
COUNTY	GRANT	HIGHWAY	US-60
		STATE JOB NO.	29838(07)
		SHEET NO.	03



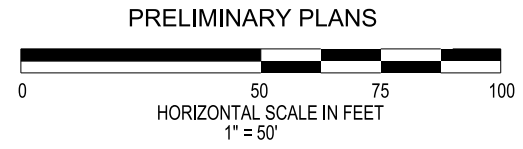
- PROPOSED COLD MILLING & ASPHALT OVERLAY
- CONCRETE DRIVEWAY CONSTRUCTION
- PROPOSED SIDEWALK
- PROPOSED ADA RAMP CURB & GUTTER
- PROPOSED SOD
- PRESENT RIGHT-OF-WAY



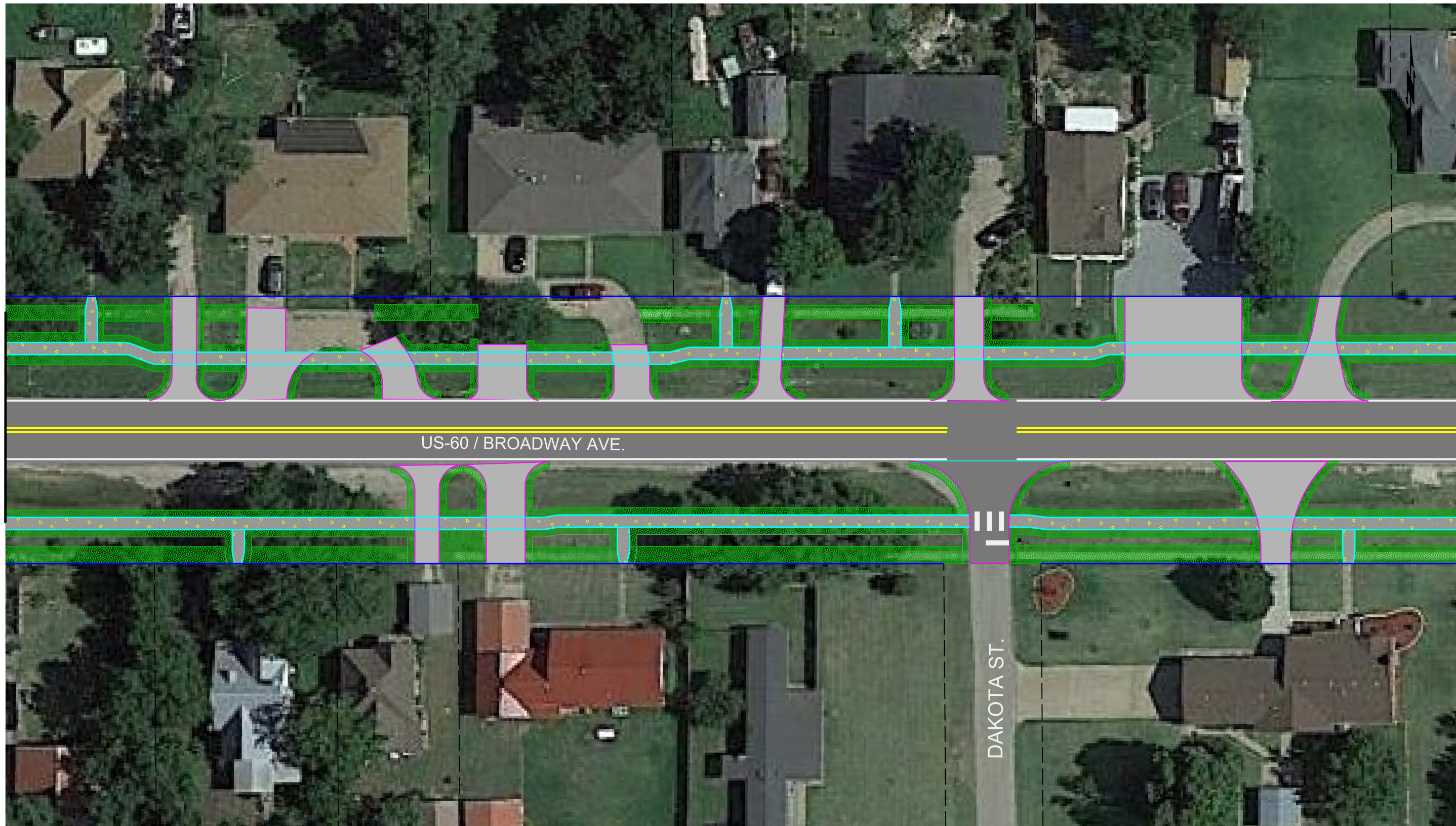
DESIGN		OKLAHOMA DEPARTMENT OF TRANSPORTATION	
DRAWN		US-60 (POND CREEK) ROADWAY IMPROVEMENTS PLAN SHEET 4	
CHECKED			
APPROVED			
SQUAD	ATKINS		
COUNTY	GRANT	HIGHWAY	US-60
		STATE JOB NO.	29838(07)
		SHEET NO.	04



- PROPOSED COLD MILLING & ASPHALT OVERLAY
- CONCRETE DRIVEWAY CONSTRUCTION
- PROPOSED SIDEWALK
- PROPOSED ADA RAMP CURB & GUTTER
- PROPOSED SOD
- PRESENT RIGHT-OF-WAY



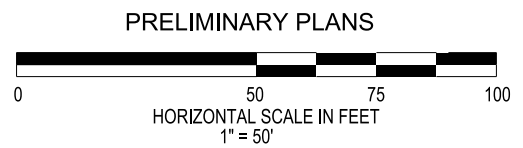
DESIGN		OKLAHOMA DEPARTMENT OF TRANSPORTATION US-60 (POND CREEK) ROADWAY IMPROVEMENTS PLAN SHEET 5					
DRAWN							
CHECKED							
APPROVED							
SQUAD	ATKINS						
COUNTY	GRANT	HIGHWAY	US-60	STATE JOB NO.	29838(07)	SHEET NO.	05



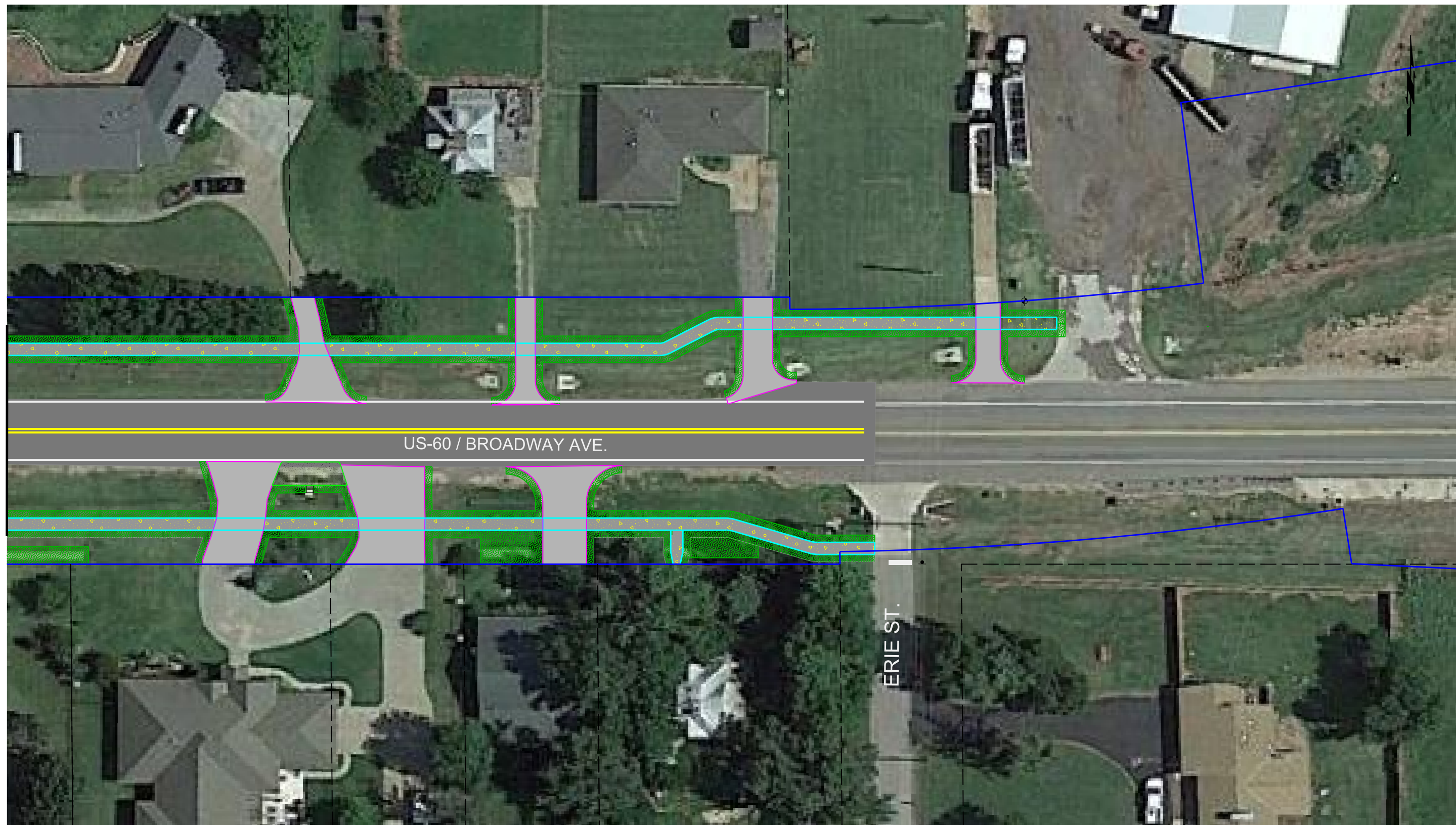
US-60 / BROADWAY AVE.

DAKOTA ST.

- PROPOSED COLD MILLING & ASPHALT OVERLAY
- CONCRETE DRIVEWAY CONSTRUCTION
- PROPOSED SIDEWALK
- PROPOSED ADA RAMP CURB & GUTTER
- PROPOSED SOD
- PRESENT RIGHT-OF-WAY



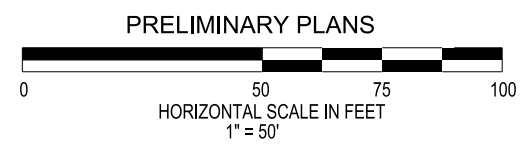
DESIGN		OKLAHOMA DEPARTMENT OF TRANSPORTATION US-60 (POND CREEK) ROADWAY IMPROVEMENTS PLAN SHEET 6
DRAWN		
CHECKED		
APPROVED		
SQUAD	ATKINS	
COUNTY GRANT HIGHWAY US-60 STATE JOB NO. 29838(07) SHEET NO. 06		



US-60 / BROADWAY AVE.

ERIE ST.

- PROPOSED COLD MILLING & ASPHALT OVERLAY
- CONCRETE DRIVEWAY CONSTRUCTION
- PROPOSED SIDEWALK
- PROPOSED SOD
- PRESENT RIGHT-OF-WAY



DESIGN		OKLAHOMA DEPARTMENT OF TRANSPORTATION US-60 (POND CREEK) ROADWAY IMPROVEMENTS PLAN SHEET 7					
DRAWN							
CHECKED							
APPROVED							
SQUAD	ATKINS						
COUNTY	GRANT	HIGHWAY	US-60	STATE JOB NO.	29838(07)	SHEET NO.	07