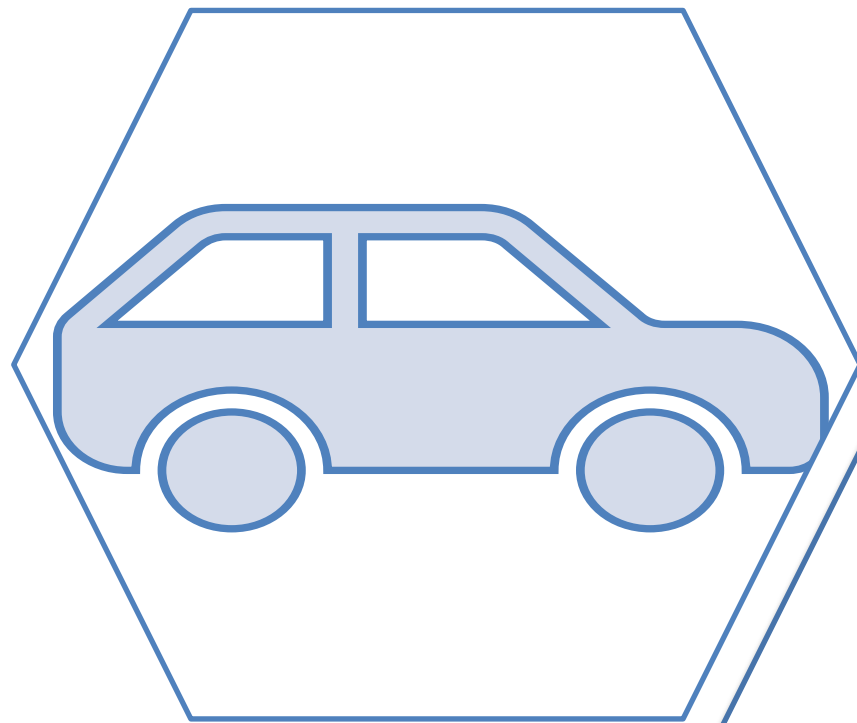
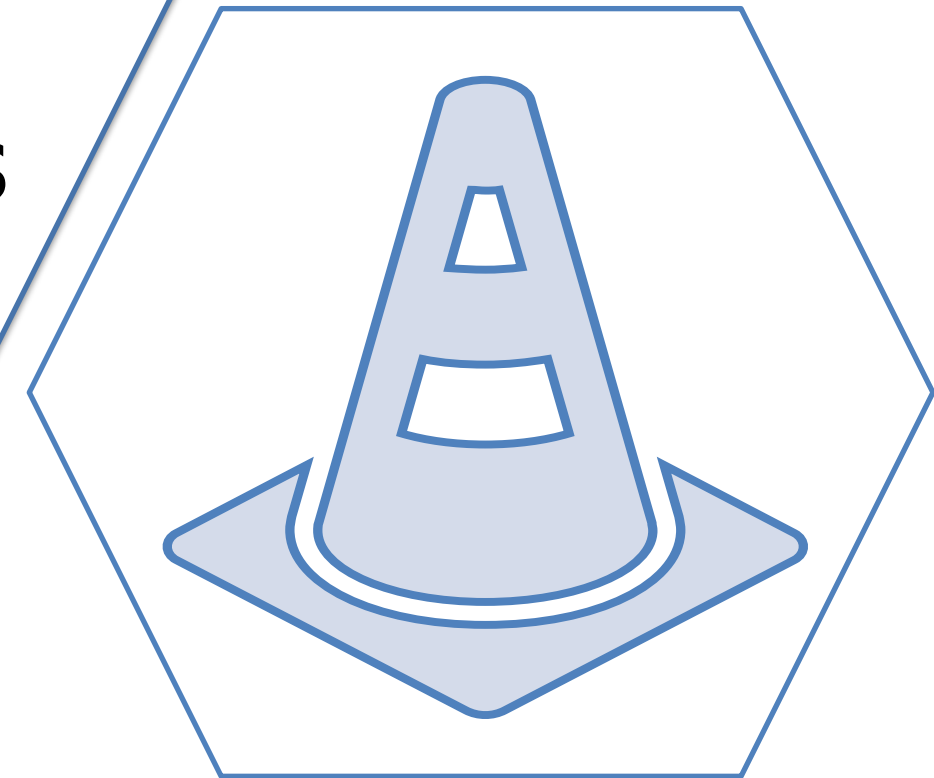


Proposed Improvements



Improve
Pavement
Conditions

Improve
Highway
Safety and
Operations



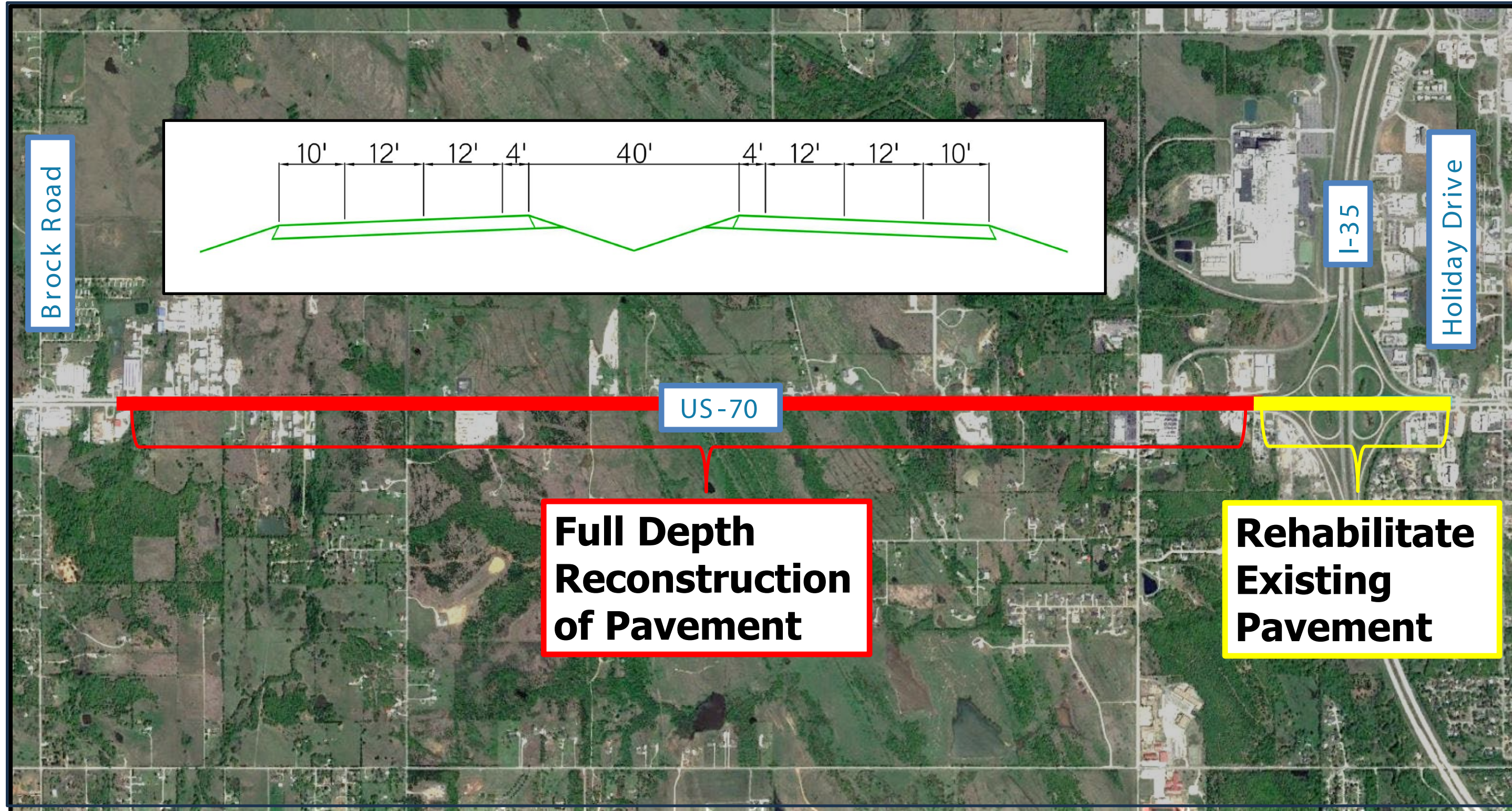
Purpose and Need

The Purpose and Need of the Proposed Project is to Improve the Pavement Condition, Highway Safety, and Operations.

- To Improve Pavement Conditions:
 - Replace Pavement (Majority of Area)
 - Rehabilitate Pavement
- To Improve Highway Safety and Operations:
 - Correct Sight-Distance and Grade Issues (Cutting Down Hills and Filling in Valleys)
 - Add Deceleration Lanes at Section Line Roads and Median Openings
 - Address Access Management Issues (Review Driveway and Median Locations)
 - Make Additional Operational Improvements (Review Traffic Signals, Turn Lanes, etc.)



Improve Pavement Conditions Along Corridor



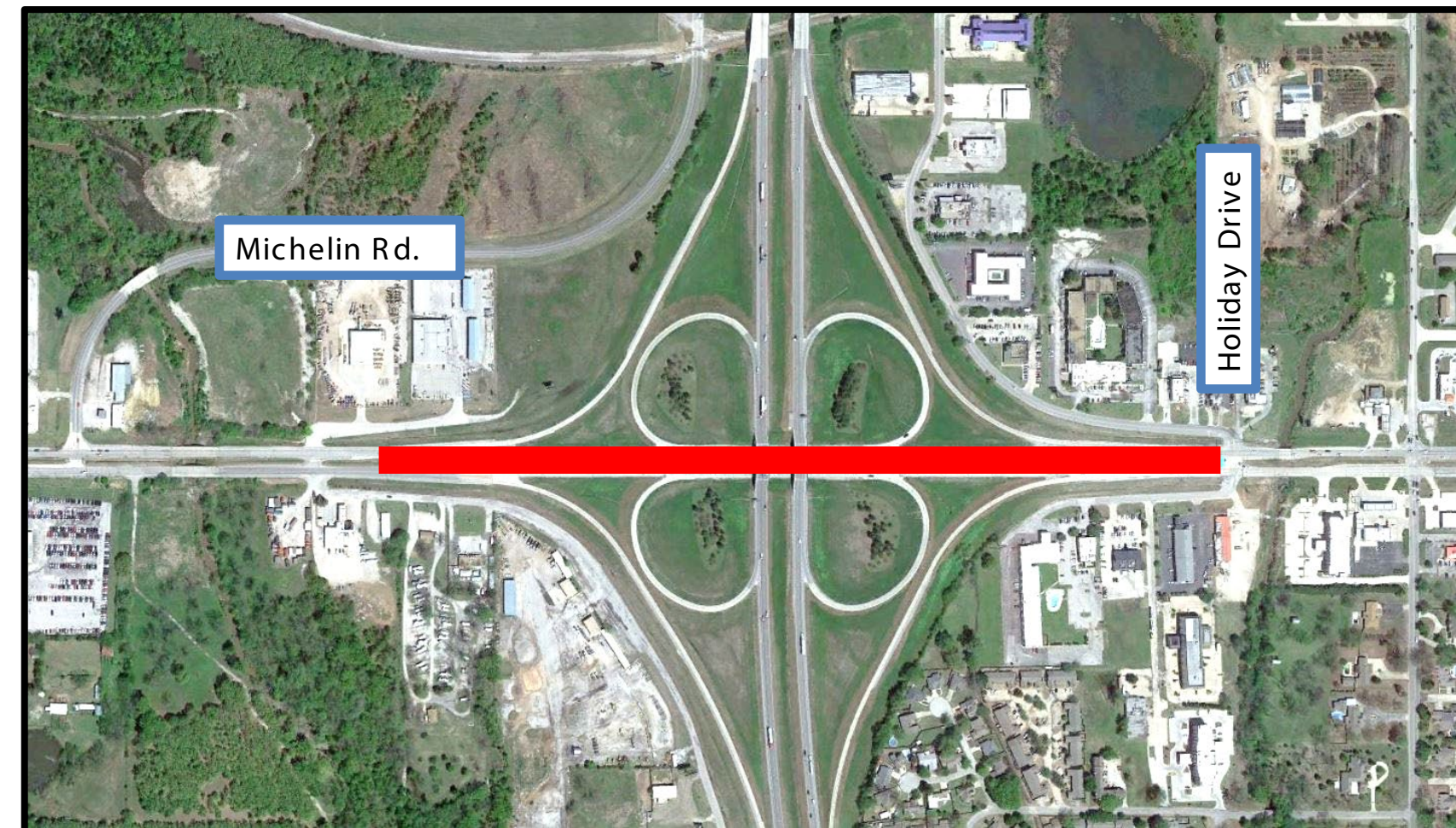
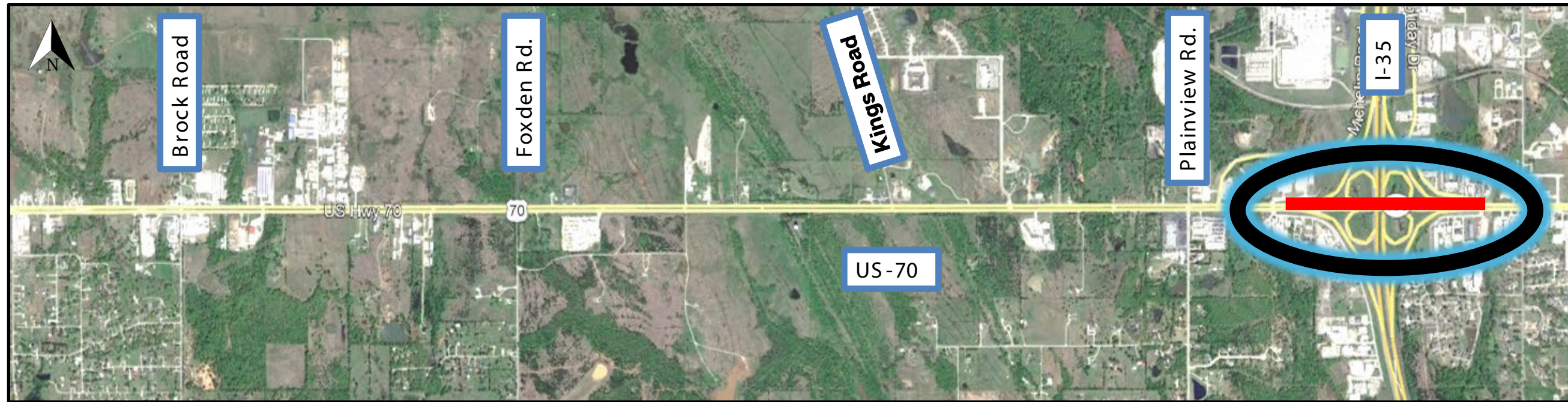
Proposed Improvements

- Reconstruction
- Rehabilitation

Full Depth Reconstruction of Pavement

Rehabilitate Existing Pavement

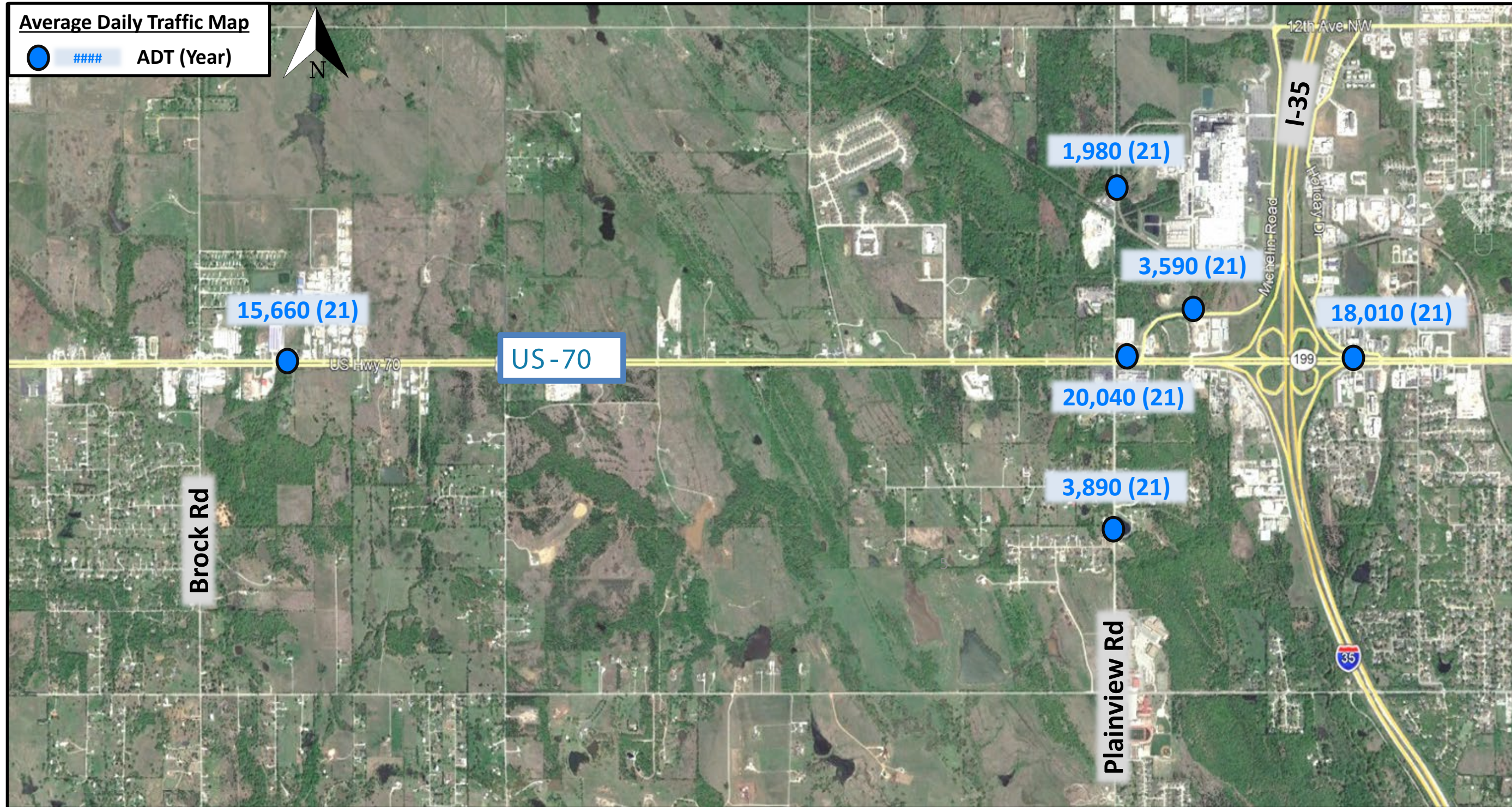
US-70 PROJECT OVERVIEW



Pavement Issues



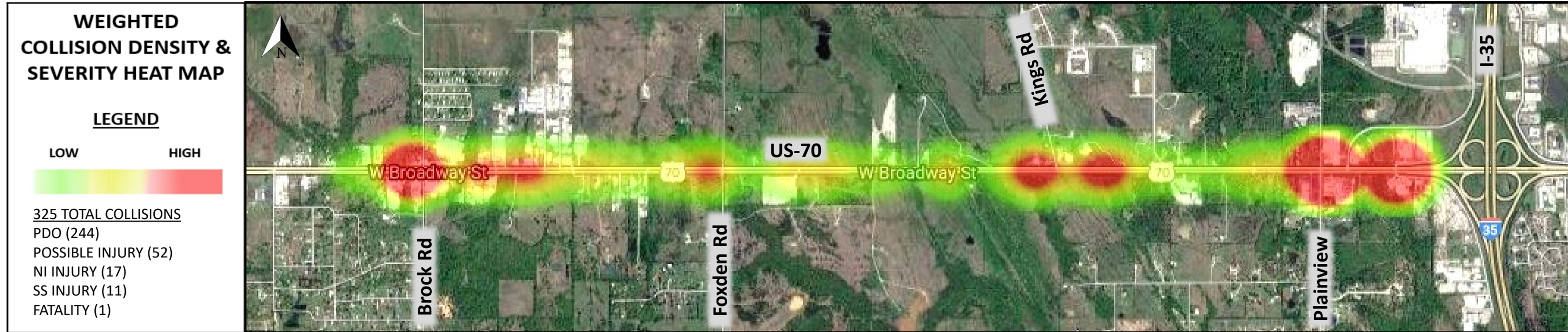
US-70 PROJECT OVERVIEW



Existing Daily Traffic

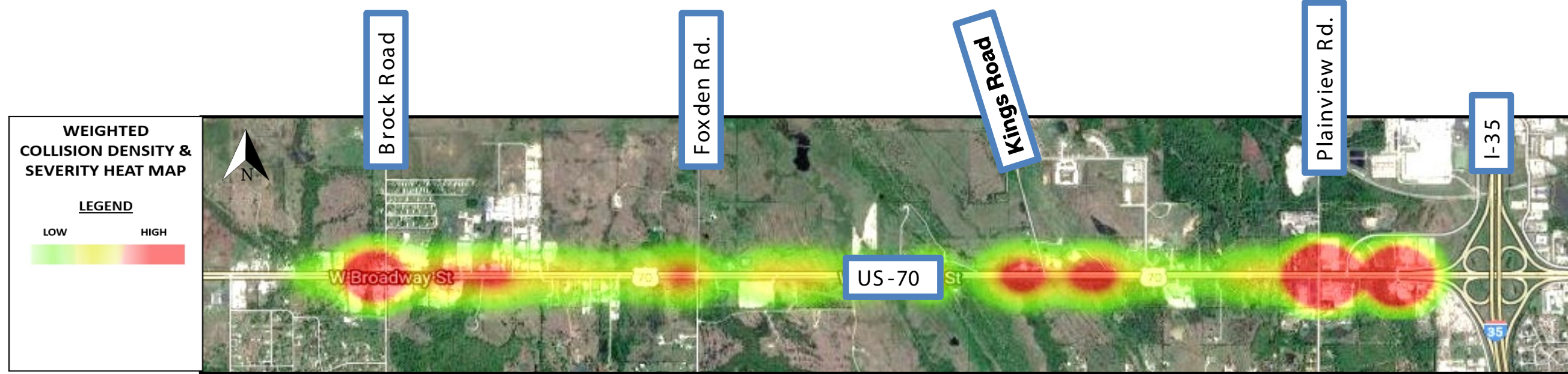
- Traffic Data has been Developed for US-70 and all Local Roads
- US-70 has over 20,000 Vehicles Per Day

US-70 PROJECT OVERVIEW

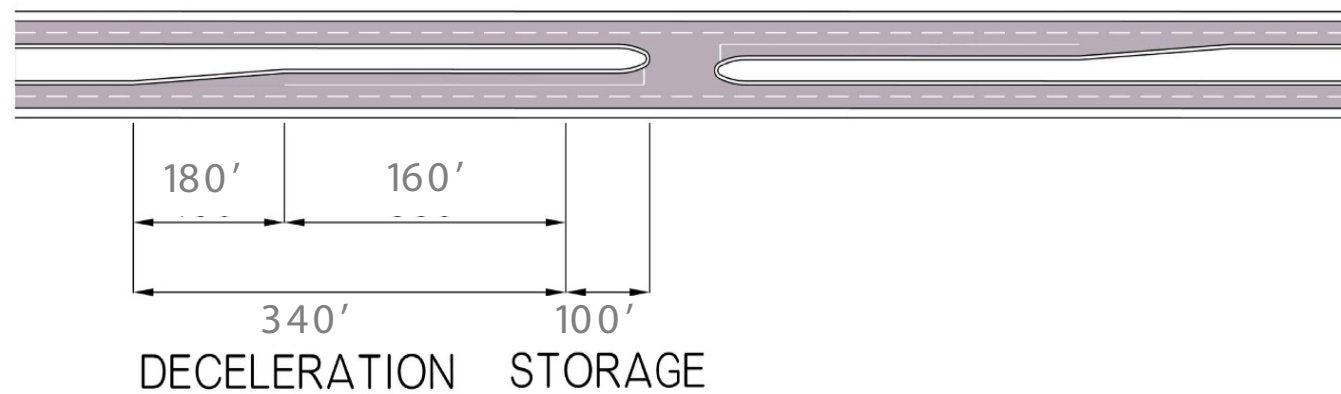


10 Year Collision Data

US-70 PROJECT OVERVIEW



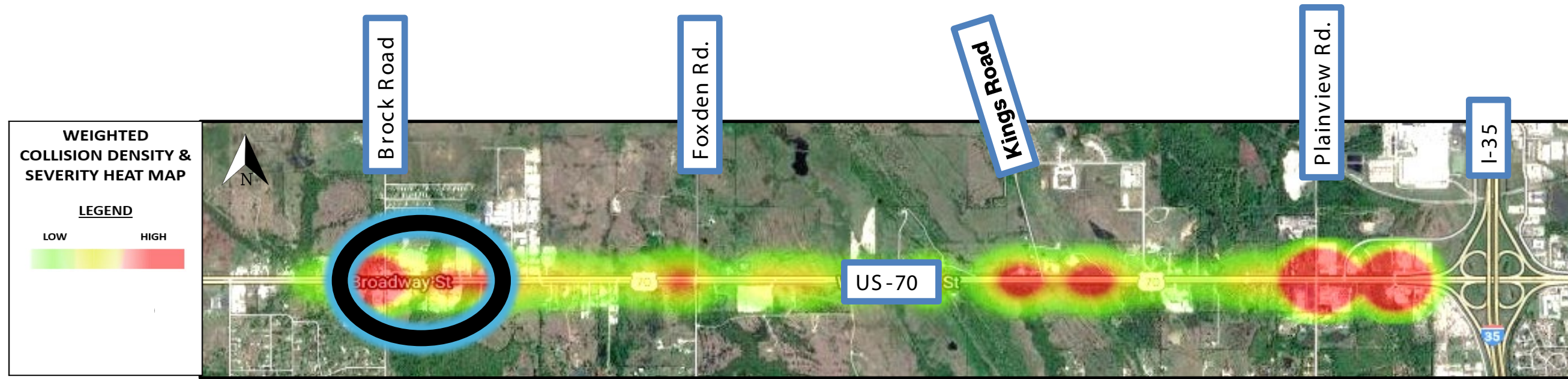
Safety Improvements



Differential Speed Reduction Measures

- To Decelerate from 55 mph to Stopped Condition Requires 340 feet
- This Keeps Vehicles from Drastic Speed Reductions while in Mainline Lane
- A 100-foot Minimum Storage Length is Shown, But will Vary Depending on Locational Needs
- Removal of Fixed Objects Located in Roadside Clear Zones
- Access Management
 - Removal of Unnecessary or Duplicate Drives
 - Consolidation of some Median Openings
- The Addition of Right-Turn Lanes
- Providing Adequate Sight-Distance
- Providing Adequate Deceleration Left-Turn Lanes with Proper Storage at All Median Openings

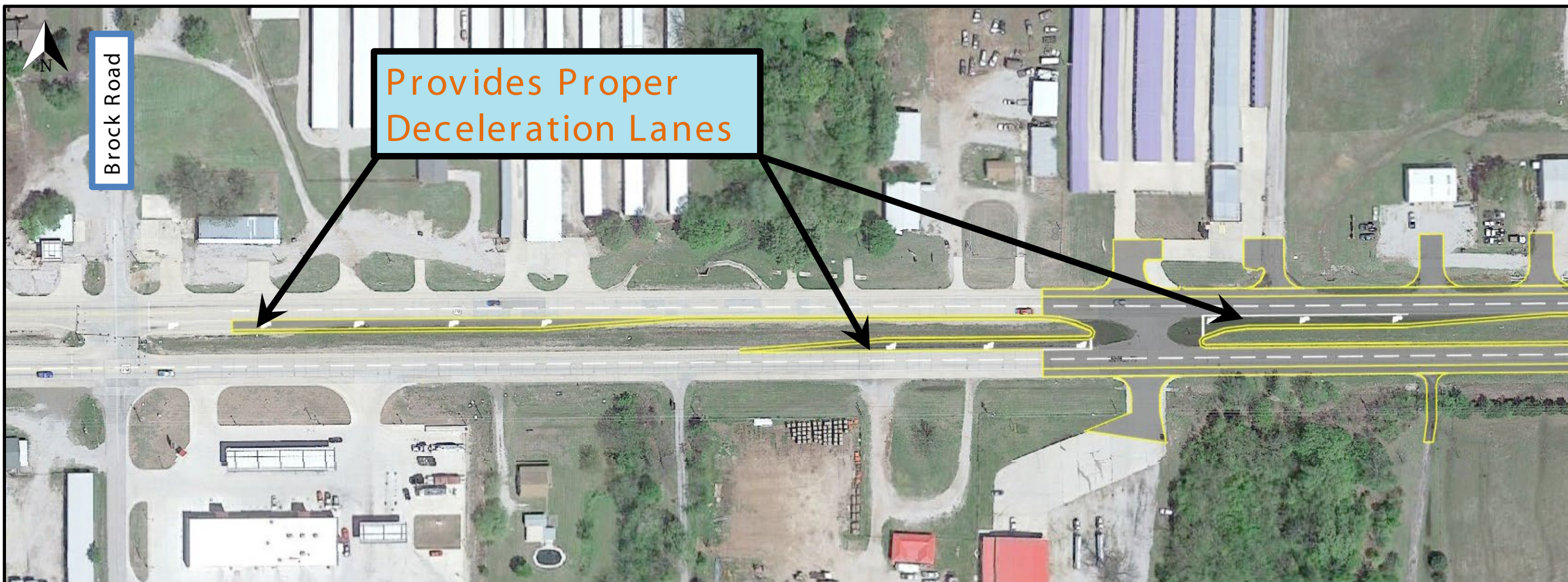
US-70 PROJECT OVERVIEW



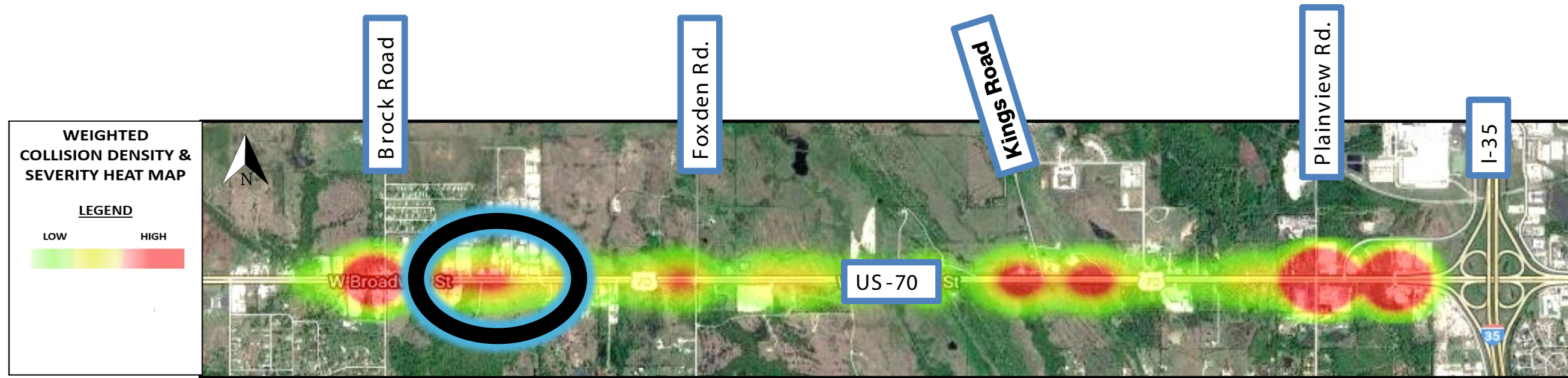
Safety Improvements

Median Openings

- Provide Adequate Deceleration Left-Turn Lanes with Proper Storage



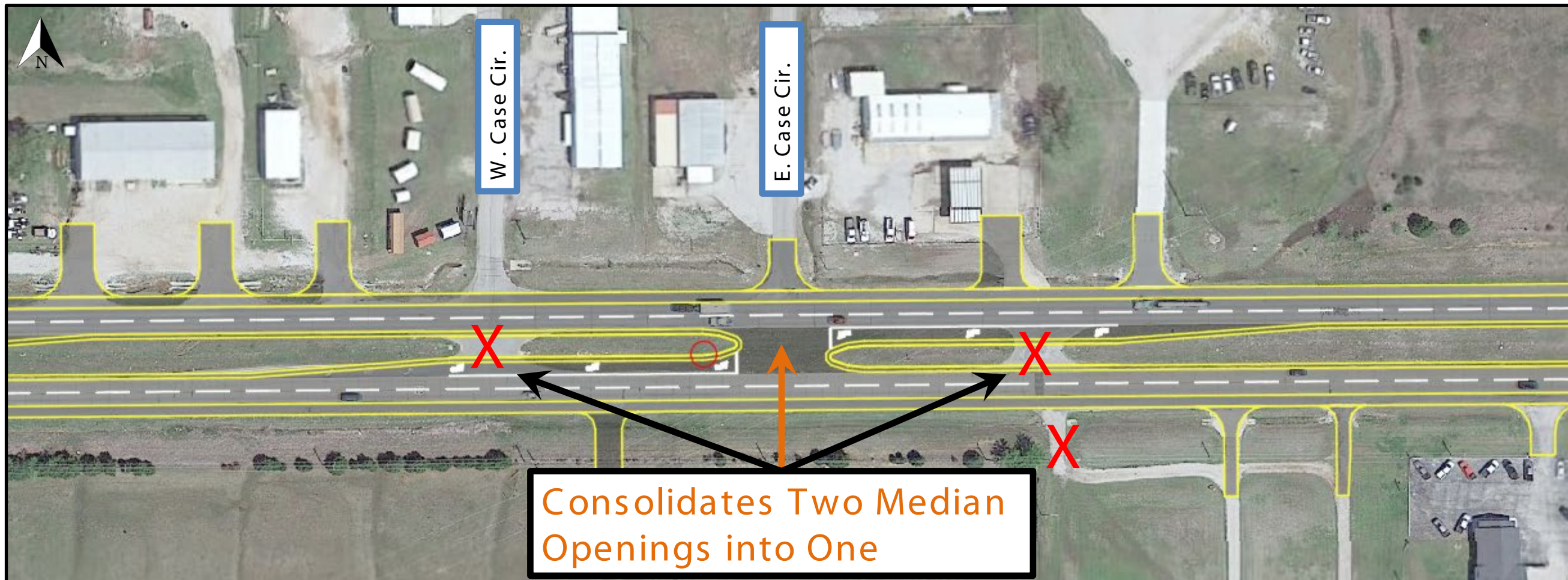
US-70 PROJECT OVERVIEW



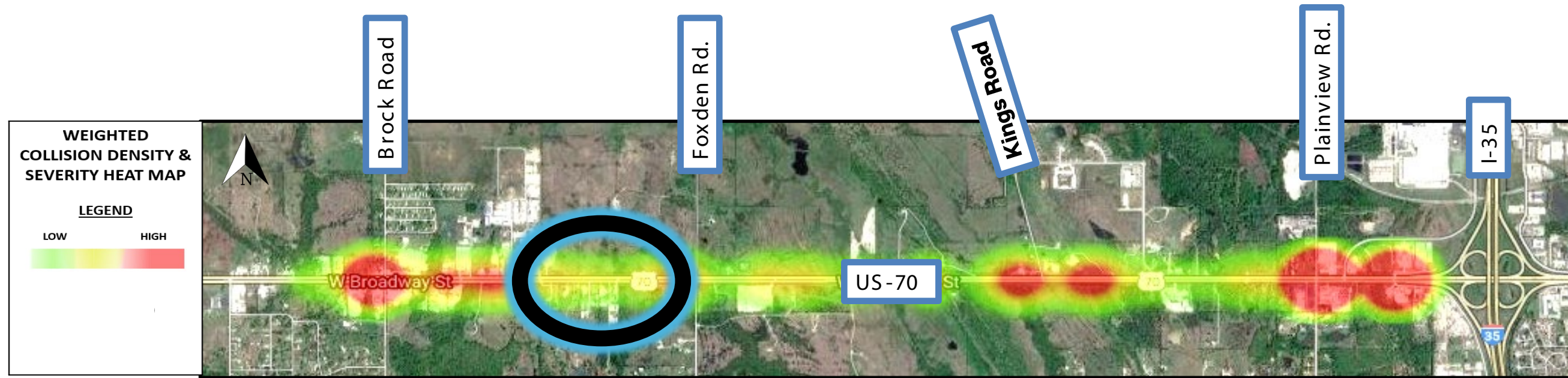
Safety Improvements

Consolidate Median Openings

- Consolidates Two Median Openings into One
- Provide Adequate Deceleration Left-Turn Lanes



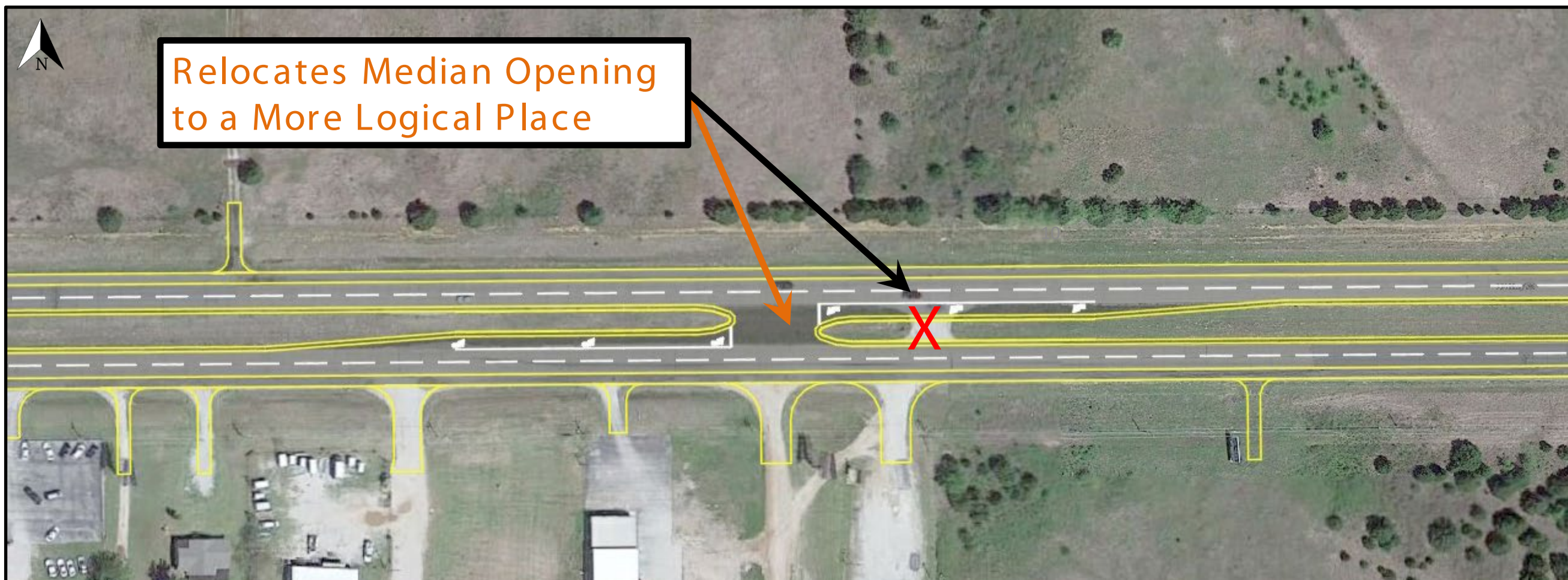
US-70 PROJECT OVERVIEW



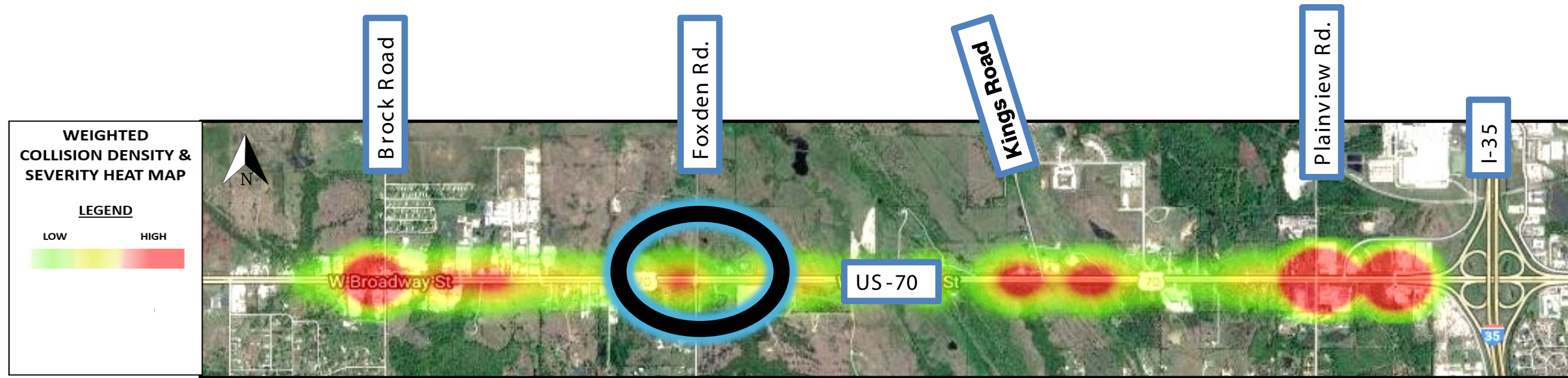
Safety Improvements

Appropriate Median Opening Locations

- Moves Opening to a Logical Location
- Provide Adequate Deceleration Left-Turn Lanes



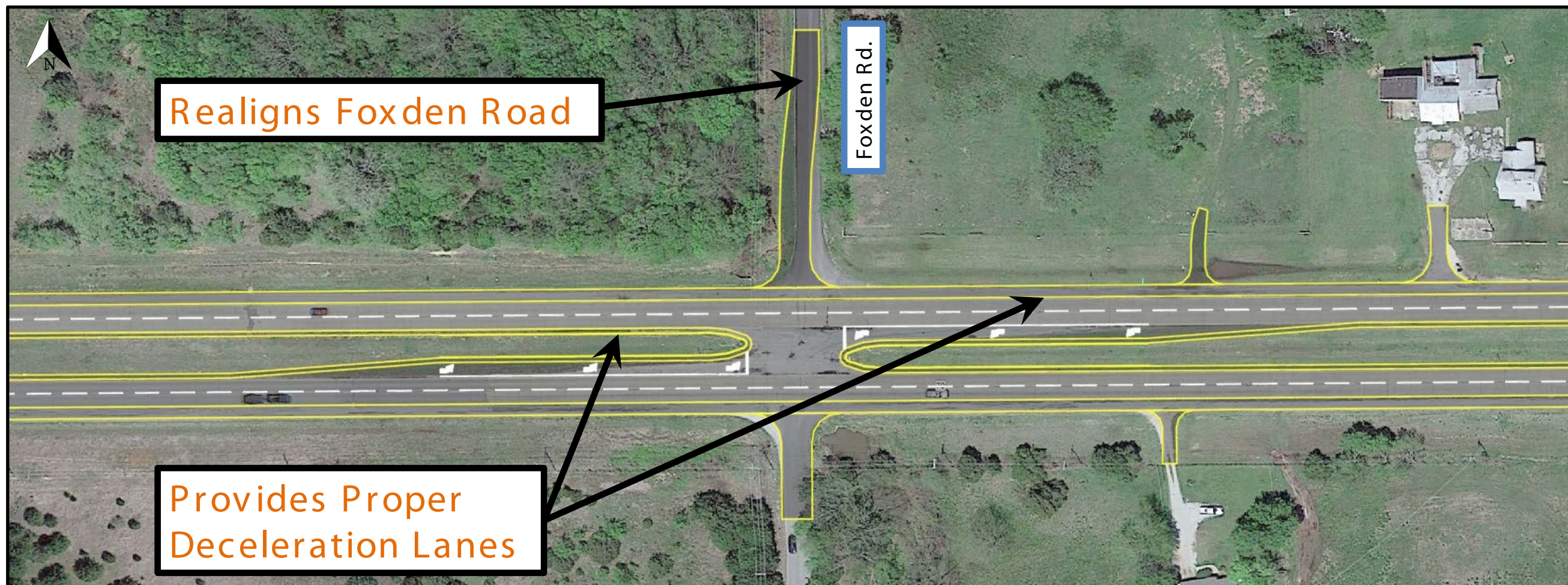
US-70 PROJECT OVERVIEW



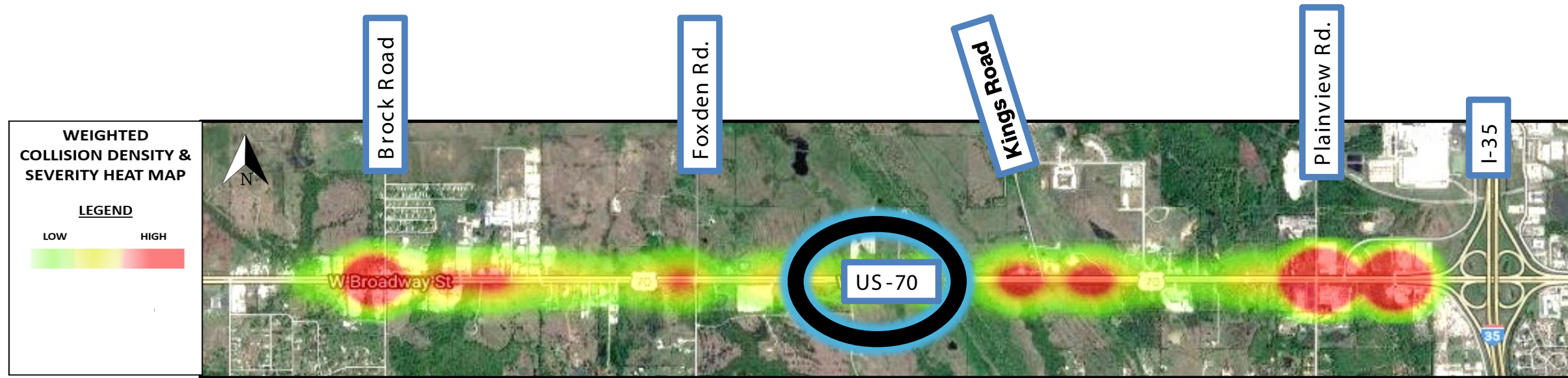
Safety Improvements

Typical Section Line Road Median Opening

- Provide Adequate Deceleration Left-Turn Lanes
- Realigns Foxden Road – Northside and Southside Will Line Up



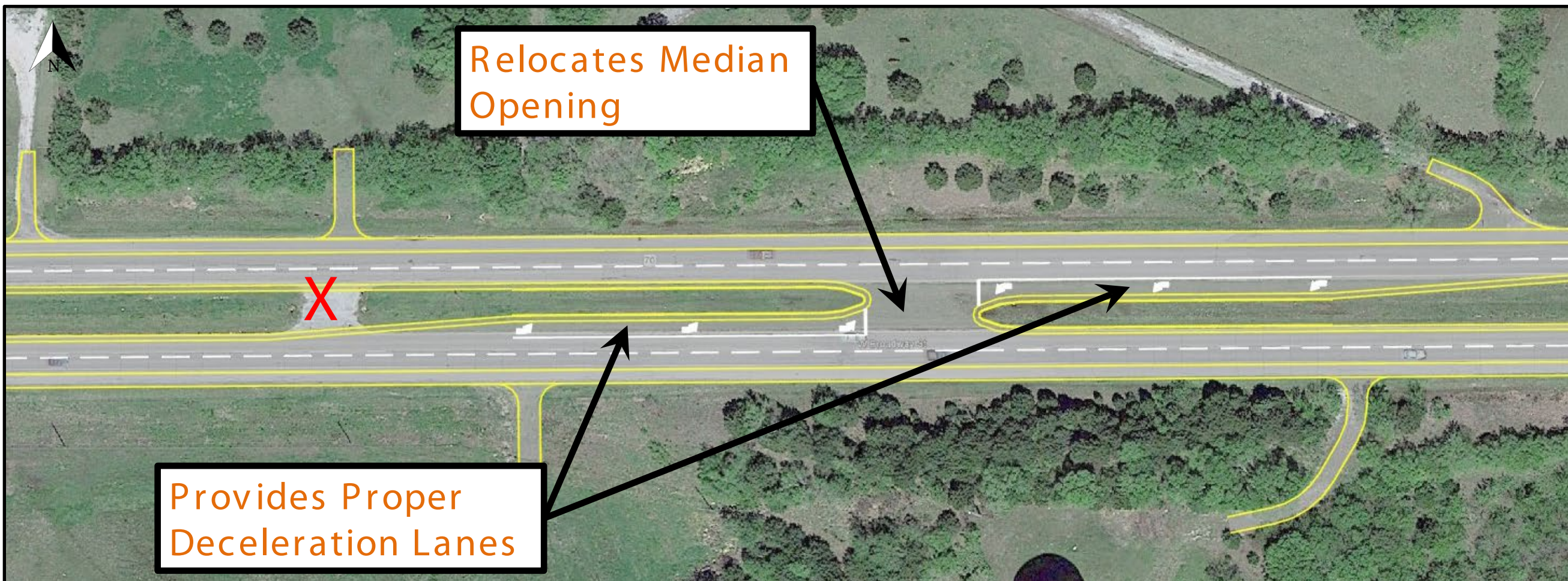
US-70 PROJECT OVERVIEW



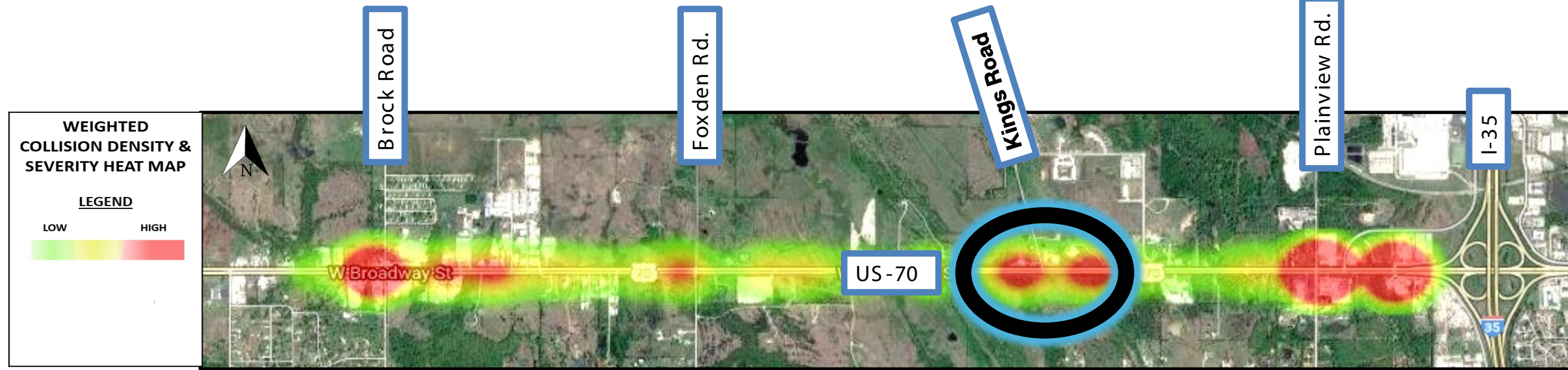
Safety Improvements

Typical U-Turn Median Opening

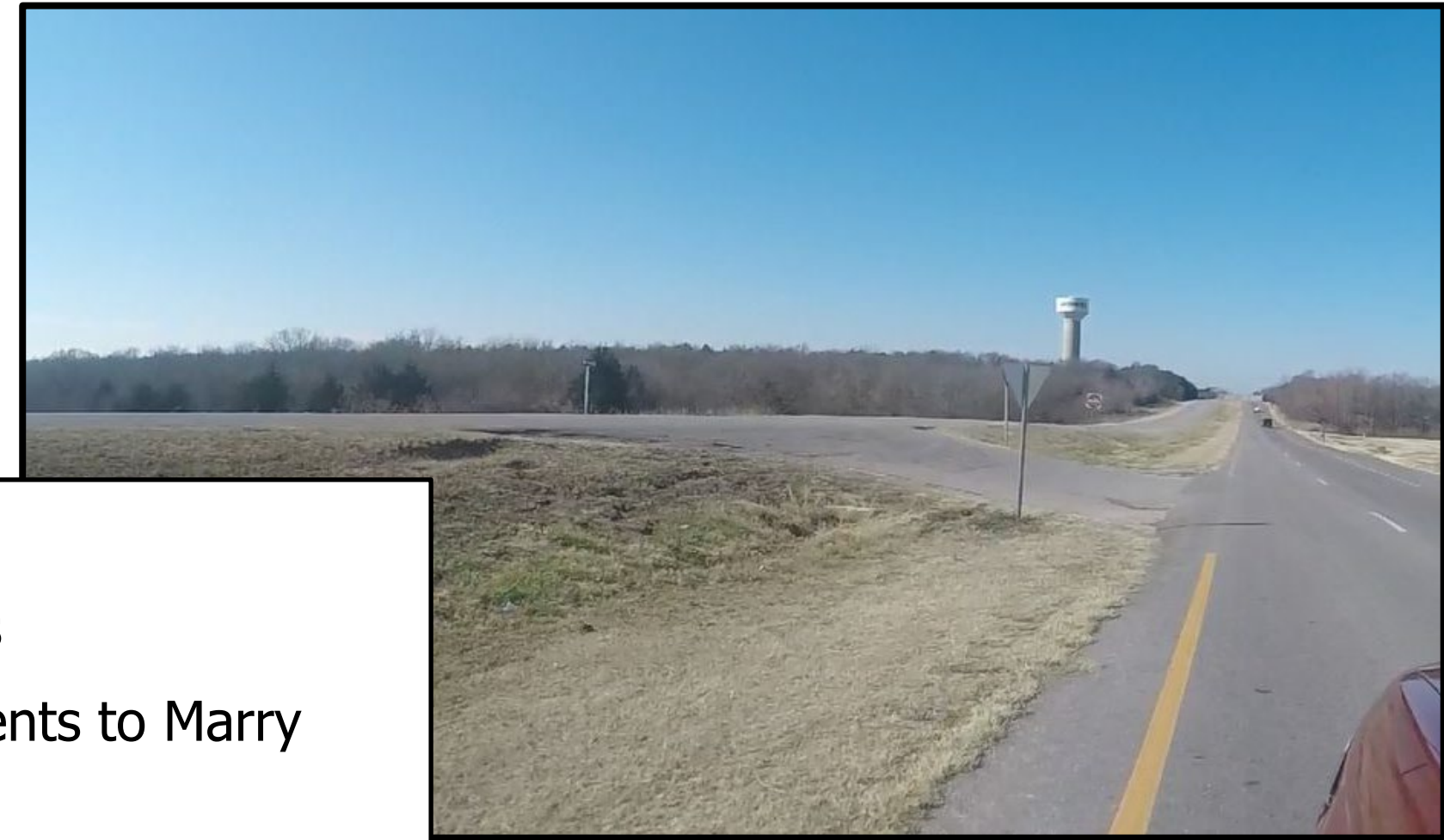
- Eliminate Unnecessary Median Openings
- Relocate Median Openings for Sight-Distance
- Provide Adequate Deceleration Left-Turn Lanes



US-70 PROJECT OVERVIEW



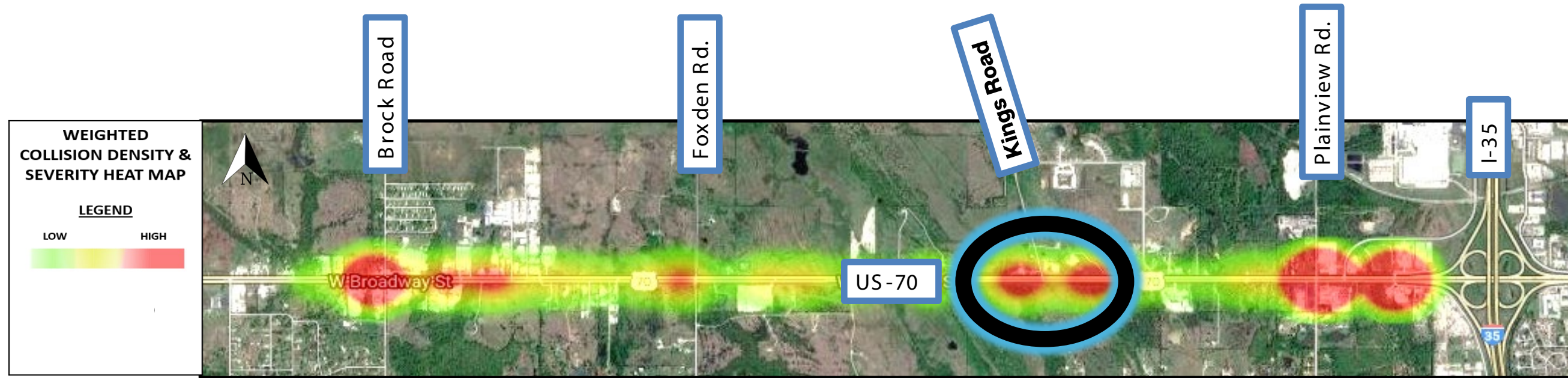
Safety Improvements



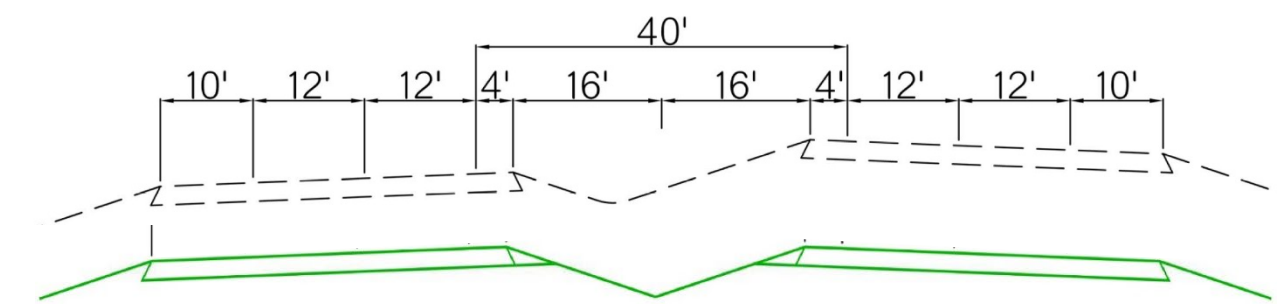
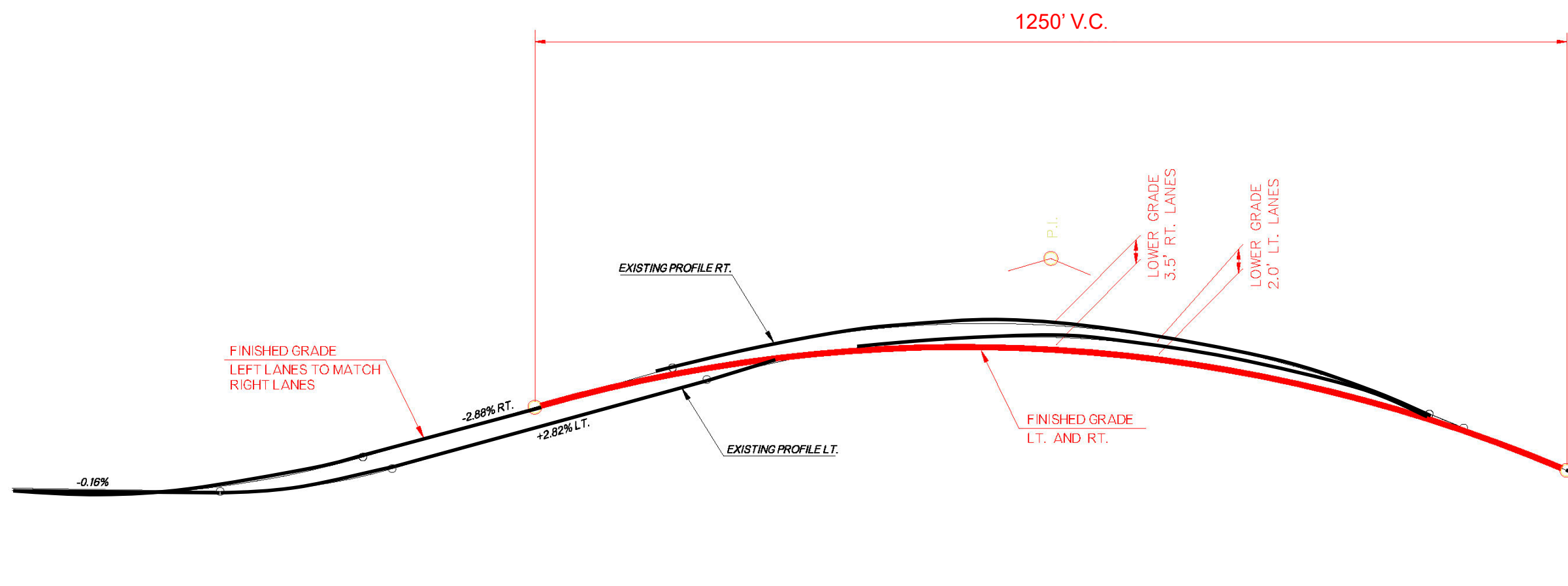
Safety Issues

- Needs Deceleration Lanes
- Needs Elevation Adjustments to Marry Grade Lines
- Sight Distance Issues to East

US-70 PROJECT OVERVIEW



Safety Improvements

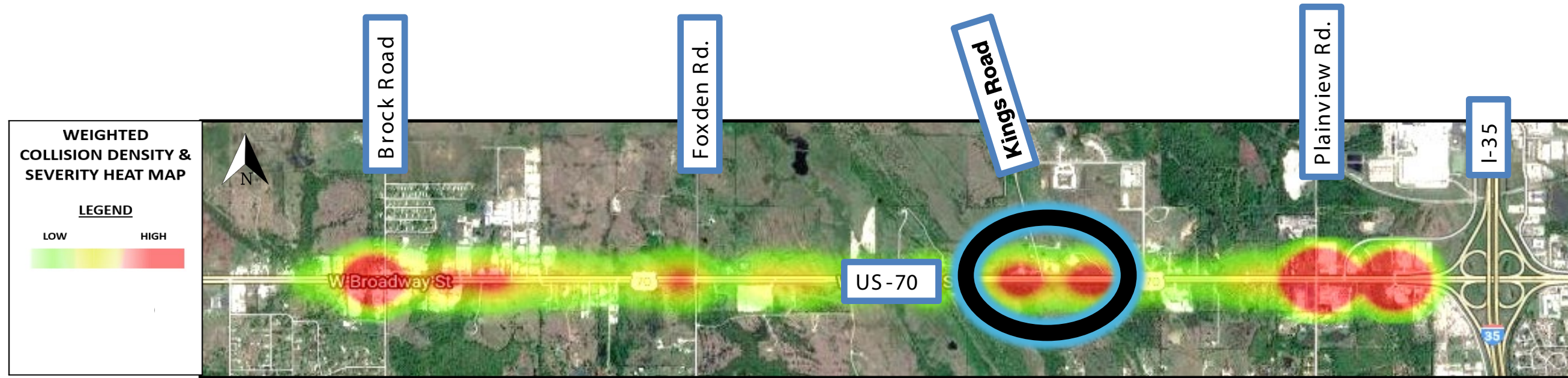


Grade Lines of Westbound and Eastbound Lanes will:

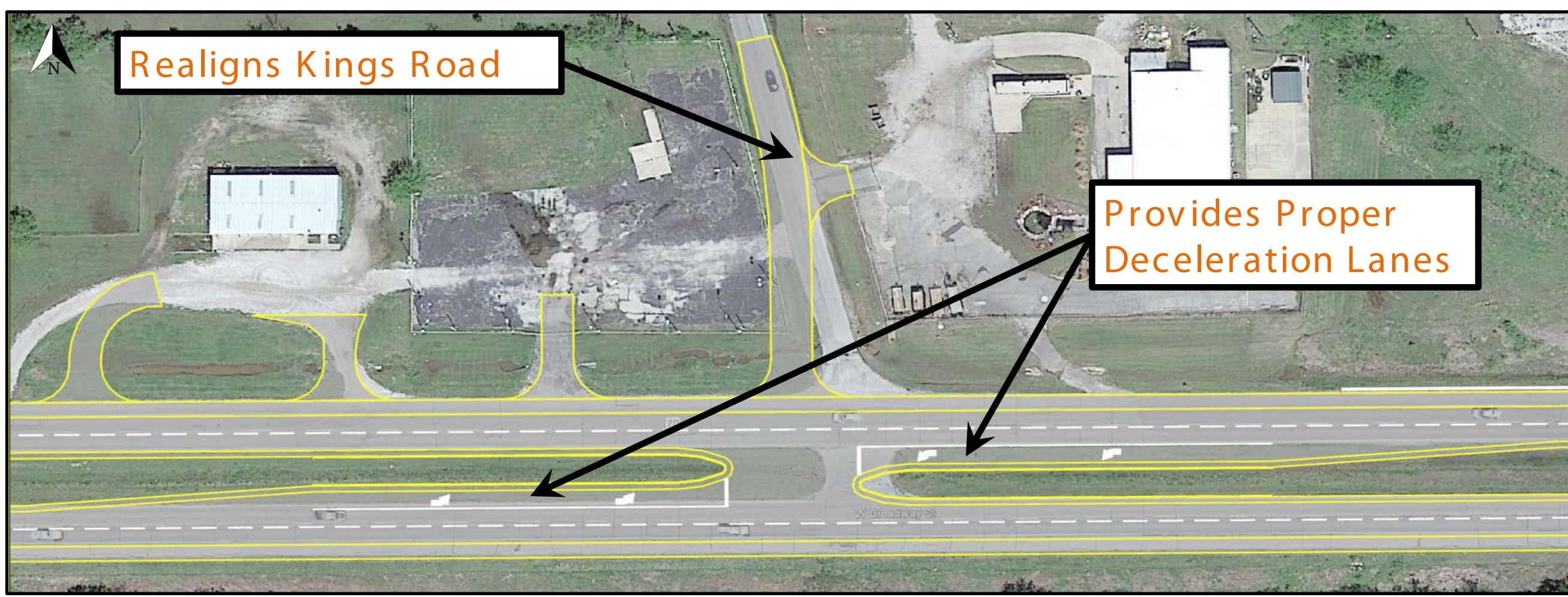
- Both will be Lowered for Sight Distance
- Will be Made to Match

Grade Adjustments for Improved Safety

US-70 PROJECT OVERVIEW

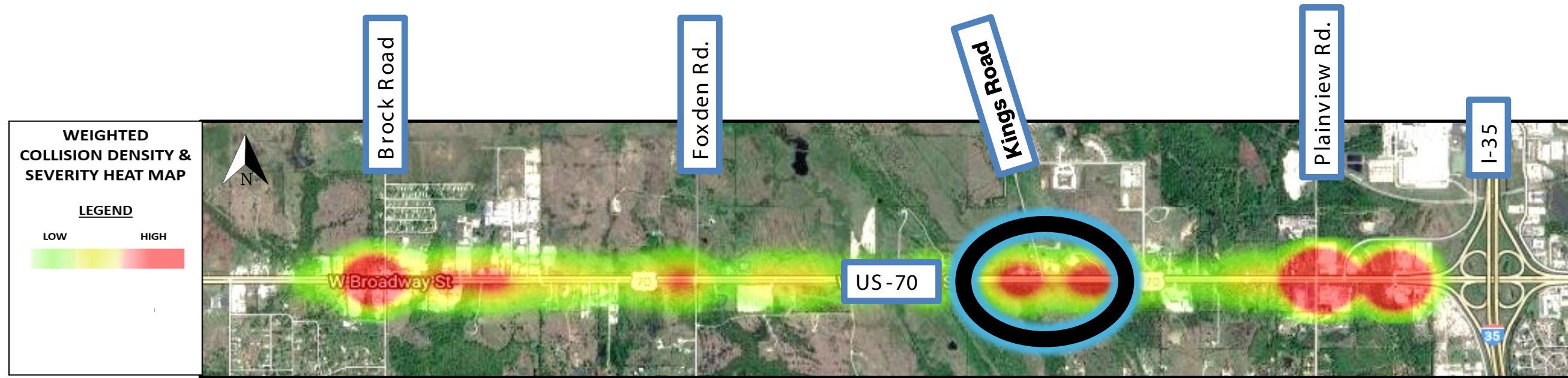


Safety Improvements



Realigns Kings Road for a "Square" intersection

US-70 PROJECT OVERVIEW



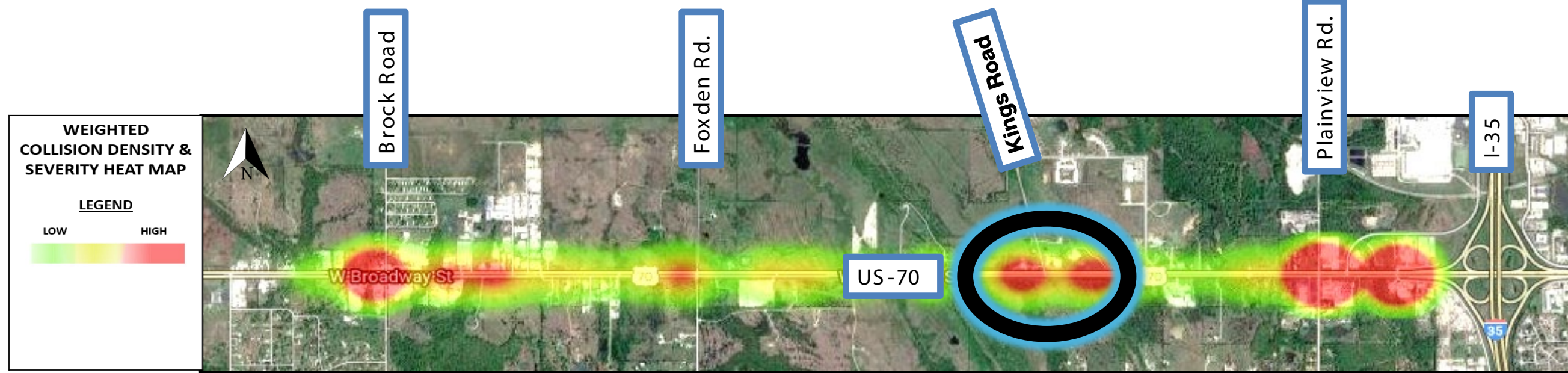
Safety Improvements



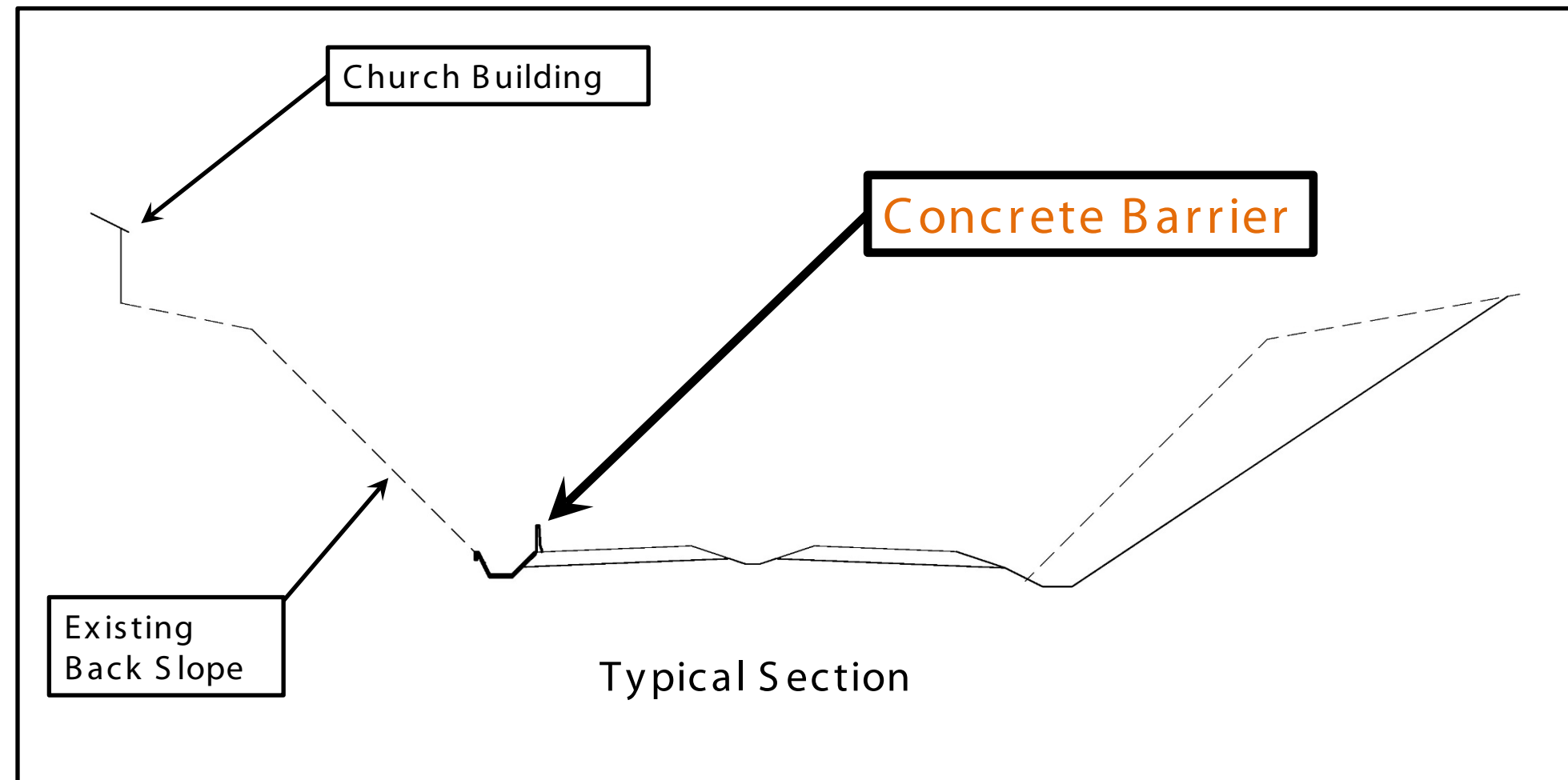
Safety Issues

- Fixed Objects in Clear Zone
- Steep Backslope in Clear Zone
- Limited ROW with Church Building in Close Proximity on the North Side of US-70

US-70 PROJECT OVERVIEW



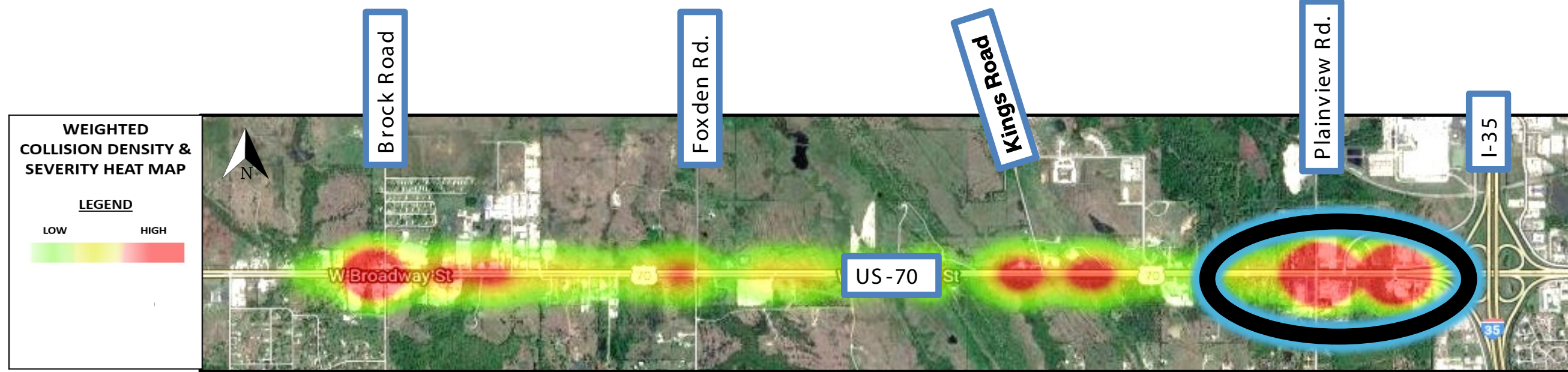
Safety Improvements



Adds Concrete Barrier

- Protects Traffic from Steep Backslopes and Fixed Objects
- Improves Drainage
- Avoids the Church Building

US-70 PROJECT OVERVIEW



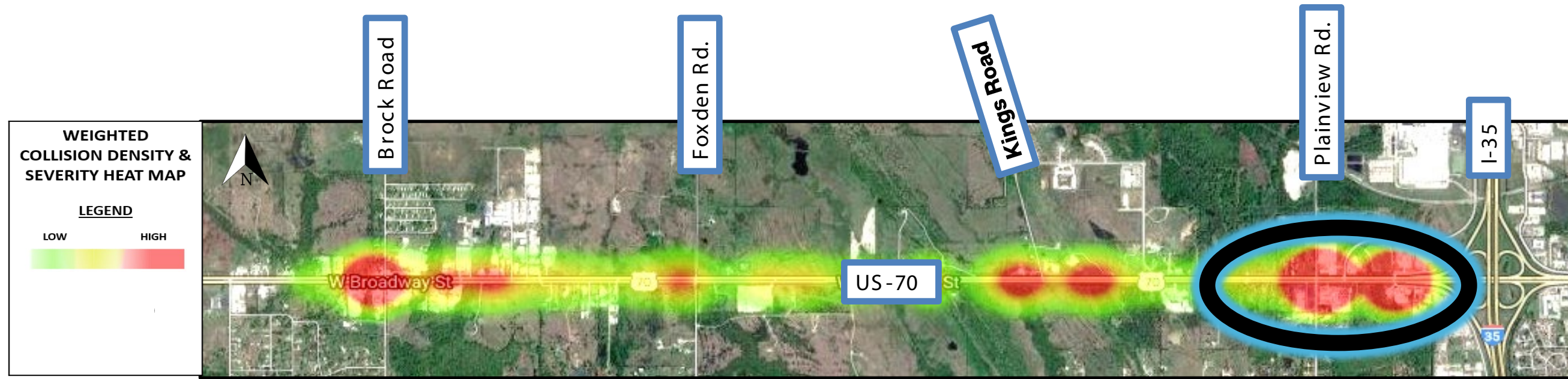
Safety Improvements



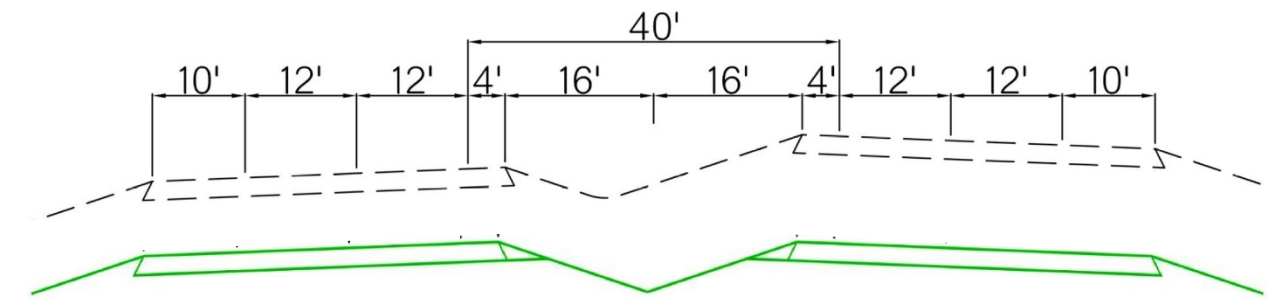
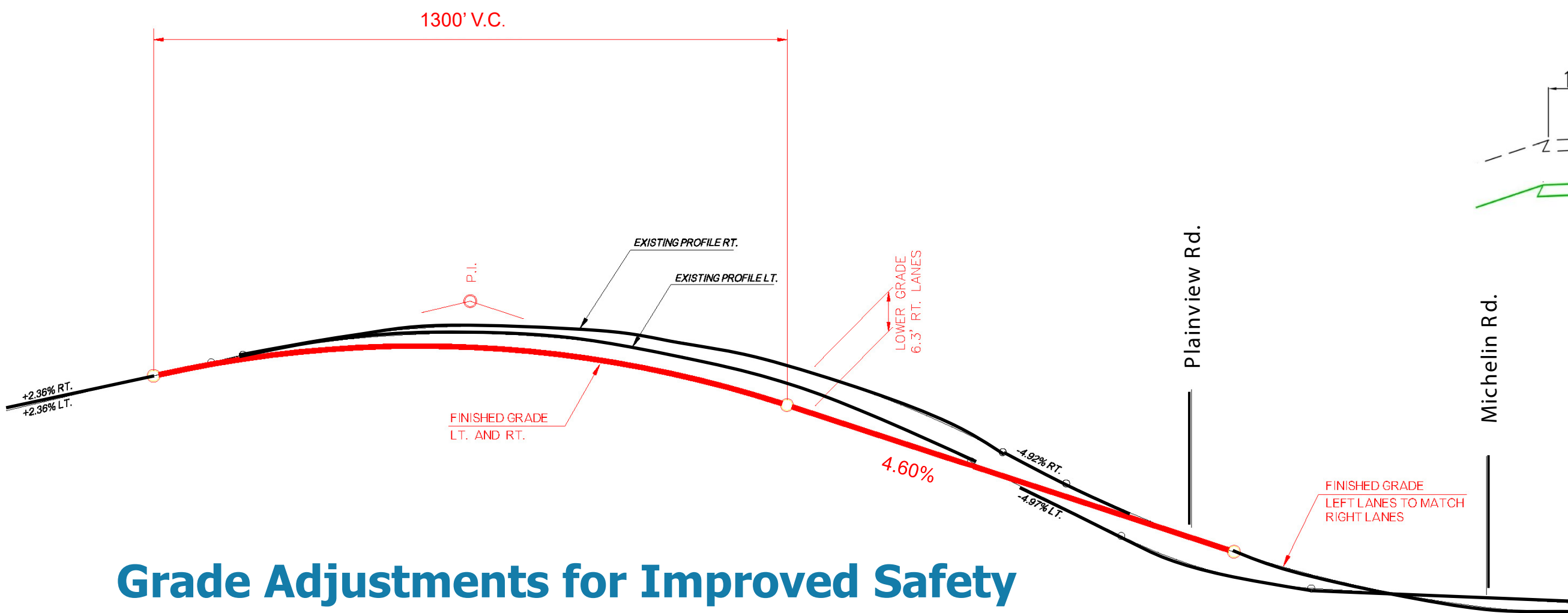
Safety Issues

- Need to Improve:
 - Stopping Sight-Distance from West
 - Crest Vertical Curves in Both Directions of Travel
 - Sag Vertical Curve in Westbound Lanes
 - Differential Grades within Intersection

US-70 PROJECT OVERVIEW



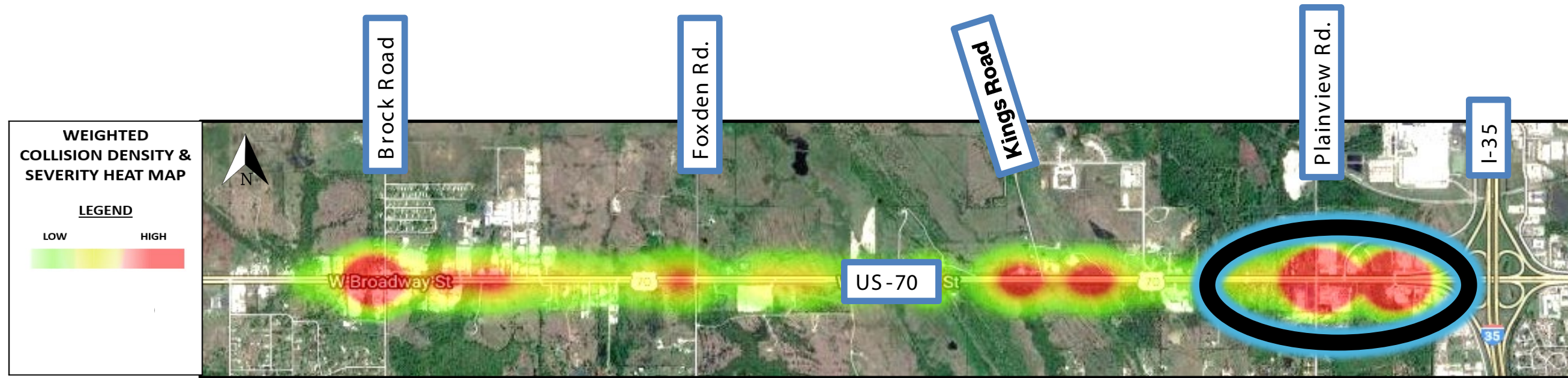
Safety Improvements



Grade Lines of Westbound and Eastbound Lanes will:

- Both will be Adjusted for Sight Distance
- Will be Made to Match

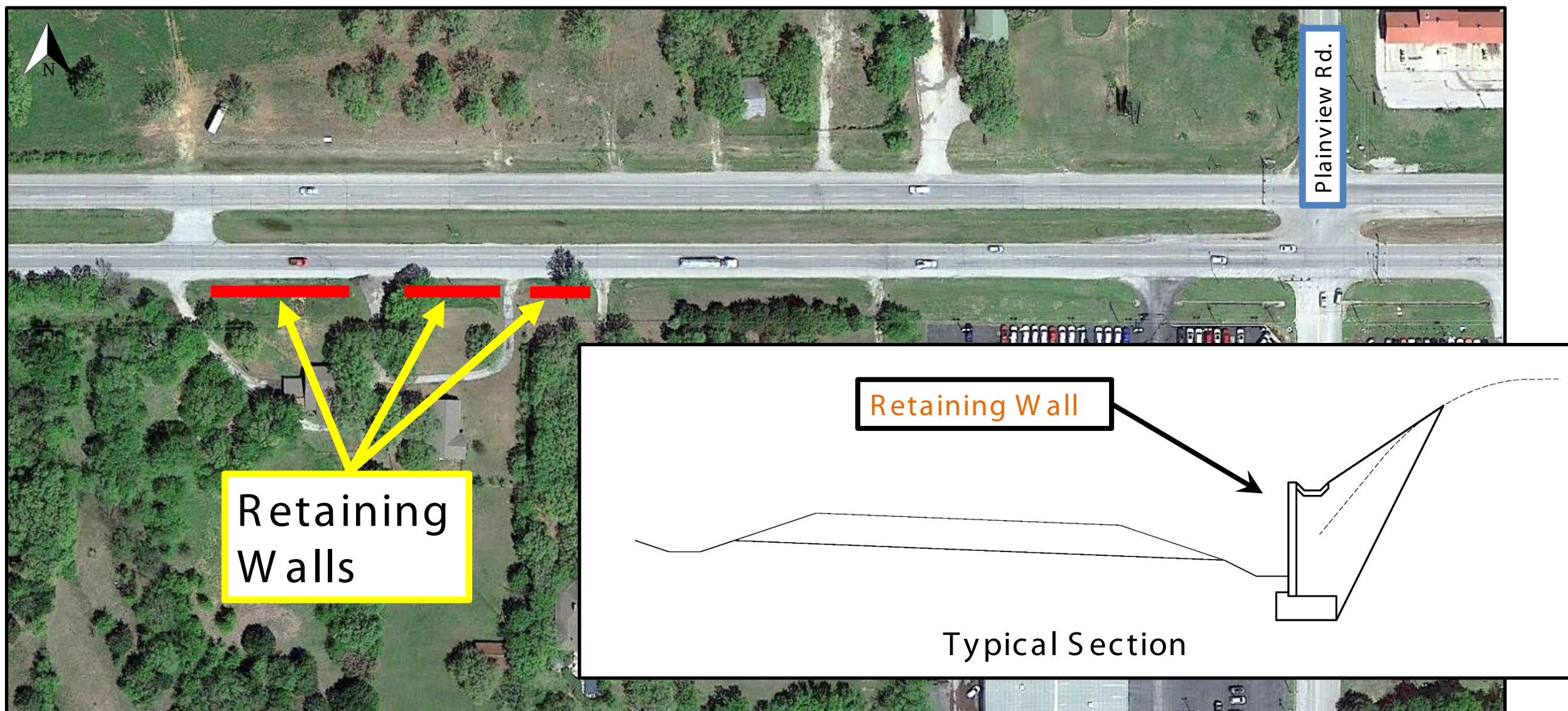
US-70 PROJECT OVERVIEW



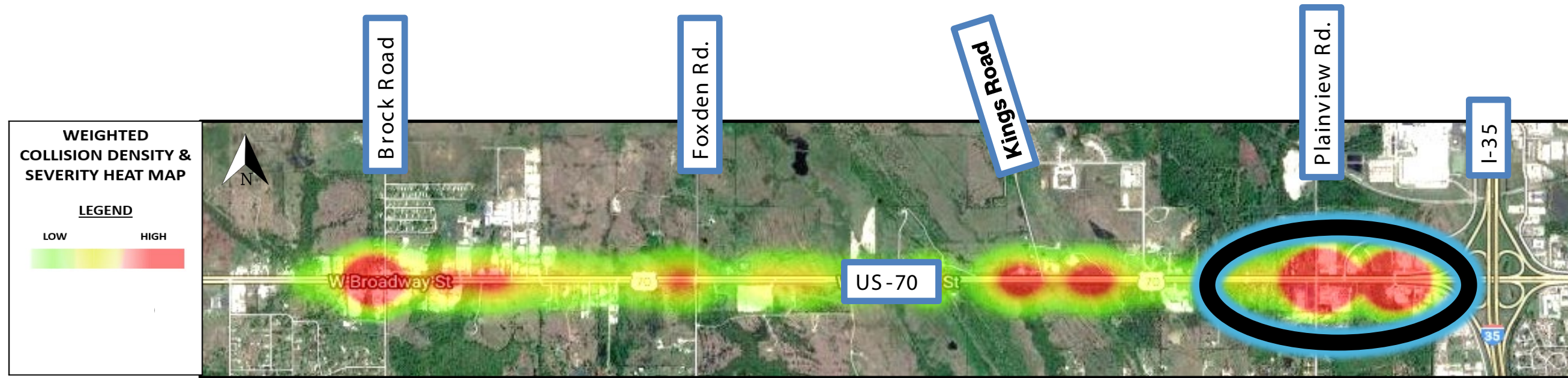
Safety Improvements

Grade Adjustments

- Requires Retaining Walls to Minimize Additional ROW



US-70 PROJECT OVERVIEW



Safety Improvements

Operational Improvements

- Extended Left-Turn Lane through Plainview and Michelin Roads
- Added Eastbound Right-Turn Lane to Plainview Road
- Signalized Intersections will be Synchronized at both Plainview and Michelin Roads
- Proposed Removal of Duplicate, Unsafe Drives

