



SoonerCare Choice

Patient-Centered Medical Home

March 9, 2011

Melody Anthony,
Director Provider Services





Patient-Centered Medical Home Timeline

Feb 2007

**MAT
created;
transition
design**

March 2008

**Outreach
campaign
began**

Sept 2008

**PCP
contract
renewal**

Jan 2009

**PCMH
launched**

July 2010

**1st Health
Access
Network**



SoonerCare Choice PCMH PCP Network: Dec 2010

255
PCPs
have been
added to the
network

1,447 PCPs
at
813 sites
with
1,060,625
total member
capacity

440,842
members are
enrolled
statewide

42%
Member
capacity
being utilized



SoonerCare Choice PCMH: PCP Tier Summary

January 2009

Tier 1 = 445

Tier 2 = 223

Tier 3 = 31

Total = 699

January 2011

Tier 1 = 555

Tier 2 = 214

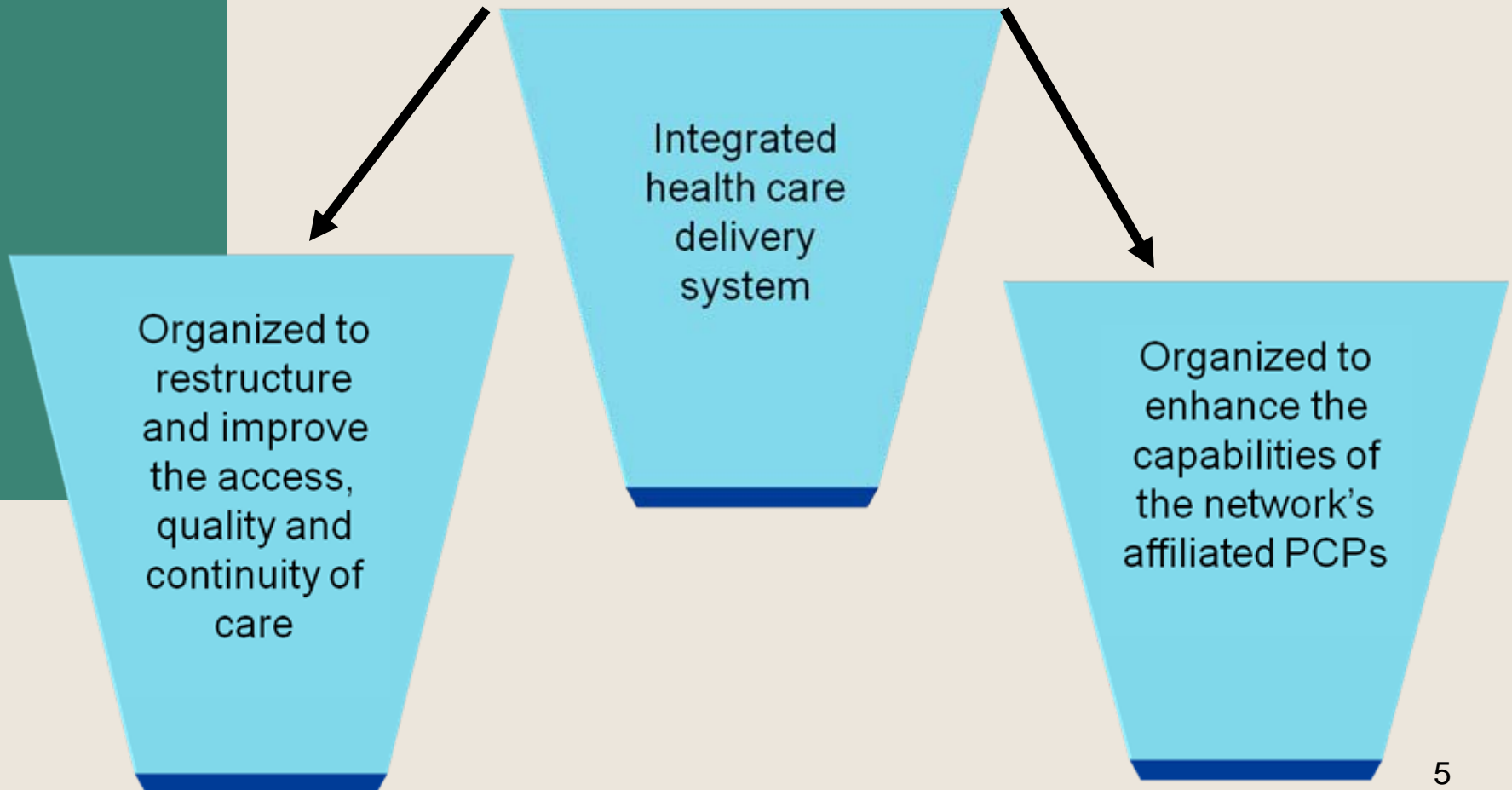
Tier 3 = 44

Total = 813

Tier count is determined by provider location



Health Access Networks (HAN)





OU Sooner HAN

- 145 PCPs/Medical Homes at 8 sites serving over 25,000 members
- All sites have EHR and Telemedicine capabilities
- 520 members under care management



Does It Work?



HEDIS Measures	SoonerCare Choice by Calendar Year								
	2001	2002	2003	2004	2005	2006	2007	2008	2009
Annual Dental Visit (Combined rate < 21 years) (ADV)	41.60%	46.60%	51.20%	53.60%	56.60%	56.30%	57.20%	59.70%	62.10%
Breast Cancer Screening (BCS)	N/A	N/A	29.80%	29.20%	31.90%	33.80%	35.10%	38.30%	43.00%
Cervical Cancer Screening (CCS)	N/A	N/A	32.60%	34.50%	43.50%	42.00%	43.70%	44.40%	46.60%
Children's Access to PCP (CAP) (at least one PCP visit)									
12-24 months	88.10%	89.50%	90.80%	91.40%	91.60%	94.30%	94.10%	94.10%	96.20%
7-11 yrs	76.70%	79.00%	79.20%	77.30%	81.50%	80.40%	80.80%	82.70%	87.60%
Adult Access to Preventive/Amb Health Services (AAP)									
20-44 yrs	68.40%	68.80%	69.80%	71.60%	72.00%	74.90%	75.60%	78.40%	83.30%
45-64 yrs	80.30%	81.50%	81.30%	81.80%	82.80%	84.20%	85.20%	86.80%	89.70%

Significant increase from previous year

Significant decrease from previous year



SFY 2009 CAHPS® Child Health Survey

- High satisfaction steady across six quality measures
- Statistically significant improvement in 2 areas

Overall rating of child's health plan:
Rating increased from 8.24 to 8.73

Always getting treatment quickly:
Rate increased from 51.89% to 70.28%



SFY 2010 CAHPS® Adult Health Survey

- Rising satisfaction with health care and customer service
- Statistically significant improvement in access to care

Always getting treatment quickly:
Rate increased from 52.01% to 59.58%



CMS 416 Report

- Effectiveness of the EPSDT program
- 80% CMS screening benchmark

Child Health Exams	FFY 2008 (Oct 07-Sept 08)	FFY 2009 (Oct 08- Sept 09)
EPSDT screening rate	73%	83%



SoonerCare Choice PCMH: Member Inquiries

	Jan-Dec 2008	Jan-Dec 2009	Jan-Dec 2010
Members	407,408	438,276	440,842
Access to Care	7,833	1,322	509
Same Day / Next Day Access to Care	1,670	13	4



Changes through 2010

- Reduced per capita cost
 - 2008 \$24.95
 - 2010 \$22.53
- Provider Profiles
 - Statistically significant improvement in observed to expected ER visit ratio
- Over \$4M paid in SoonerExcel in 2010



Questions or Comments

- Updates in global and banner messages, provider letters, OHCA public website at www.okhca.org/medical-home

- Contact OHCA

Melody Anthony
Provider Services Director
405.522.7360 / Melody.Anthony@okhca.org

