

Fiscal Year 2011 Annual Review of Plavix® (clopidogrel) and Effient® (prasugrel)

Oklahoma Health Care Authority, February 2012

Current Prior Authorization of Plavix® and Effient®

The first 90 days of therapy for these products does not require prior authorization.

Plavix® Criteria:

1. Plavix® therapy will be approved for members with one of the following diagnoses:
 - a. Recent stroke
 - b. Recent myocardial infarction
 - c. Established peripheral artery disease
 - d. Acute coronary syndrome (unstable angina/non-Q-wave MI)
 - e. Percutaneous coronary intervention with stent placement
 - f. Transient ischemic attacks (CVA, Stroke)
2. Length of approval: 1 year.

Effient® criteria:

1. Effient™ therapy will be approved for members who meet approved diagnostic criteria:
 - a. The approved diagnoses are Unstable Angina/Non-ST-Segment Elevated Myocardial Infarction and ST-Segment Elevated MI patients who are to be managed with percutaneous coronary intervention (PCI), primary or delayed.
2. Length of approval: 1 year.
3. Effient™ will not be approved for members with the following situations:
 - a. Coronary Artery Bypass Graft surgery
 - b. Members with a history of Transient Ischemic Attack or stroke
4. Members greater than 75 years of age will generally not be approved without supporting information.

After the end of 15 months, prescribers should provide supporting information for the continuation of these products.

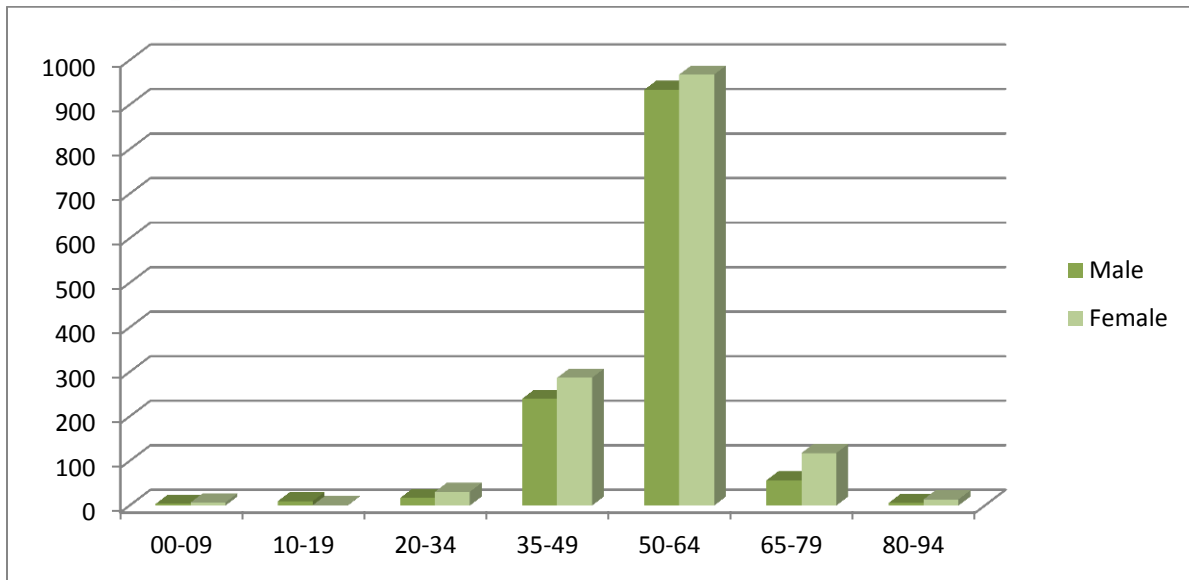
Plavix® 300 mg

- FDA approved diagnosis of non-ST-segment elevated acute coronary syndrome or ST segment elevated acute myocardial infarction.
- Approval will be for only one dose of 300mg.

Trends in Utilization

Fiscal Year	Members	Claims	Cost	Cost/ Claim	Per-Diem	Units	Days
2010	2,572	10,992	\$2,198,593.31	\$200.02	\$5.20	423,571	422,515
2011	2,696	11,667	\$2,542,584.92	\$217.93	\$5.86	435,694	433,718
% Change	4.8%	6.1%	15.6%	9.0%	12.7%	2.9%	2.7%
Change	124	675	\$343,991.61	\$17.91	\$0.66	12,123	11,203

Member Demographics for Fiscal Year 2011

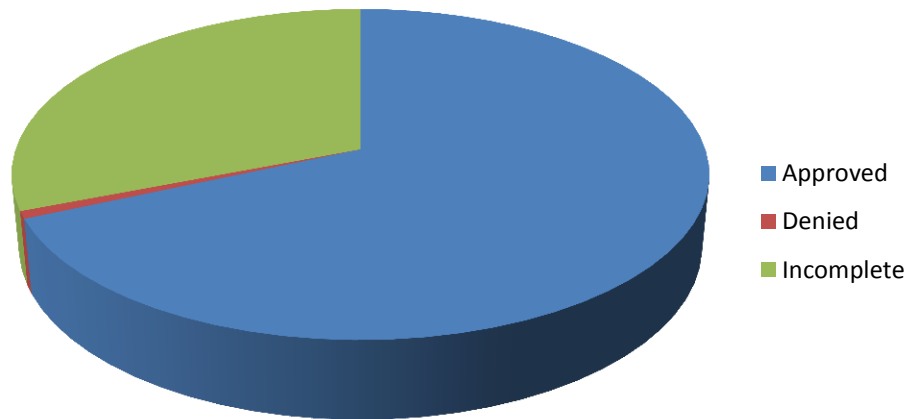


Top 10 Prescribers for Fiscal Year 2011

Specialty	Total Claims	Total Cost	Comparison By Number of Claims
Family Practitioner	3,808	\$797,333.33	~3,808
Cardiologist	3,367	\$783,915.95	~3,367
Internist	1,443	\$311,285.54	~1,443
Nurse Practitioner (Other)	691	\$153,170.18	~691
General Practitioner	612	\$131,104.99	~612
Physician Assistant	527	\$120,687.31	~527
General Surgeon	191	\$40,049.03	~191
Group Prescribers	190	\$42,803.80	~190
Emergency Medicine Practitioner	167	\$34,325.63	~167
Neurologist	92	\$15,694.99	~92

Prior Authorization for Fiscal Year 2011

A total of 2,623 prior authorization requests were processed for this category. 1,794 requests were approved and 820 were either incomplete or denied.



Product Utilization Details – Fiscal Year 2011

Product	Claims	Units	Days	Members	Total Paid	Claims / Member	\$/Day	% Cost
PLAVIX TAB 75MG	11,355	424,621	422,645	2,613	\$2,477,839.99	4.35	\$5.86	97.45%
EFFIENT TAB 10MG	312	11,073	11,073	103	\$64,744.93	3.03	\$5.85	2.55%
	11,667	435,694	433,718	2,696*	\$2,542,584.92	4.33	\$5.86	100.00%

*Unduplicated members.

Recommendations

The College of Pharmacy does not recommend any changes to the current Prior Authorization for Plavix® and Effient® at this time.