

Oklahoma Health Care Authority

Here When It Counts

**Care Management
Supports Families**

Board Retreat 2012

www.okhca.org



Mission of Care Management

Facilitate & coordinate delivery of quality healthcare to SoonerCare Members

Utilization of the most appropriate providers, resources & facilities

Outreach to Pregnant Members and Their Newborns

SoonerCare Contacts these members by

Weekly mailings by Member Services

Member responds by calling SoonerCare Helpline

Initial risk screening by Member Services representative

A positive screen initiates a Care Management referral

Member placed in active Case Management

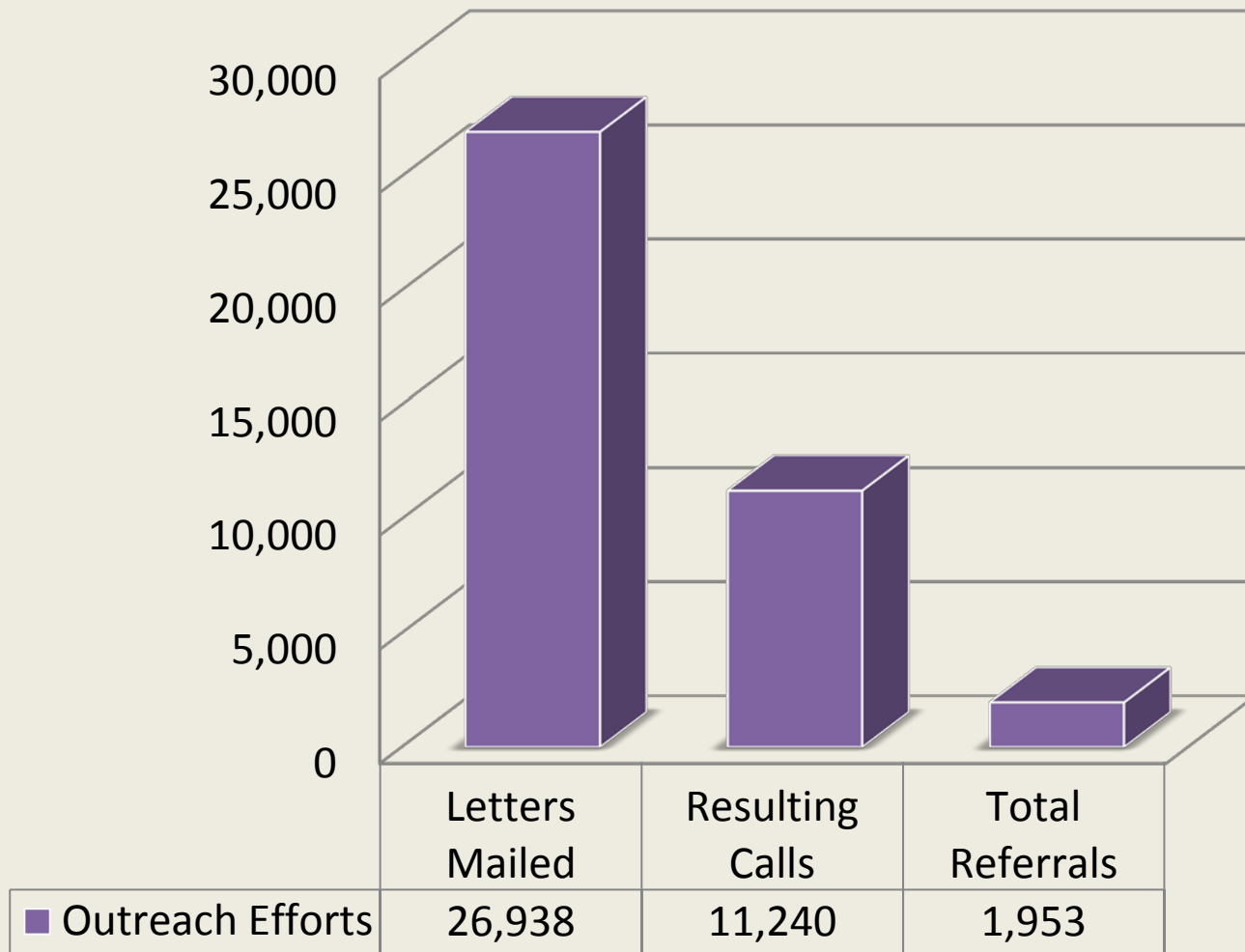


High Risk Obstetric Care

- PA Process
- Must be medically necessary
- Enhanced benefit package
- Care Management initiates & maintains contact with mom until the postpartum period
- Care Management assists with ensuring child has SoonerCare and is choosing a provider



Obstetric & High Risk Obstetric Outreach SFY 2012



Fetal & Infant Mortality Reduction (FIMR)



2006

Oklahoma had an infant mortality rate of 8.0

2008

Nationally 6.61 infant deaths per 1,000 live births

2009

Oklahoma had an infant mortality rate of 7.85

Focus of FIMR Initiative

Top 10 counties with highest infant mortality

1. Atoka
2. Choctaw
3. Coal
4. Latimer
5. McIntosh
6. Lincoln
7. Garfield
8. Greer
9. Jackson
10. Tillman

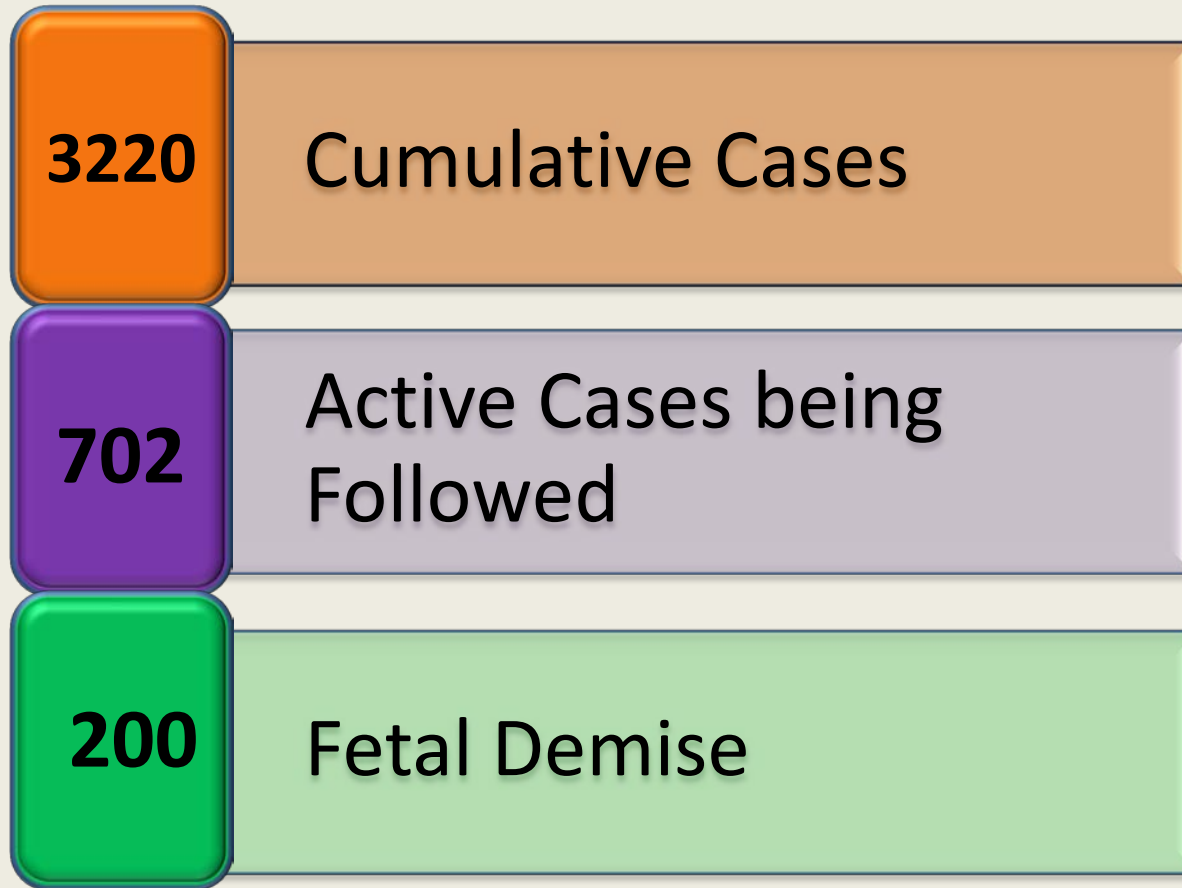


Prenatal Period

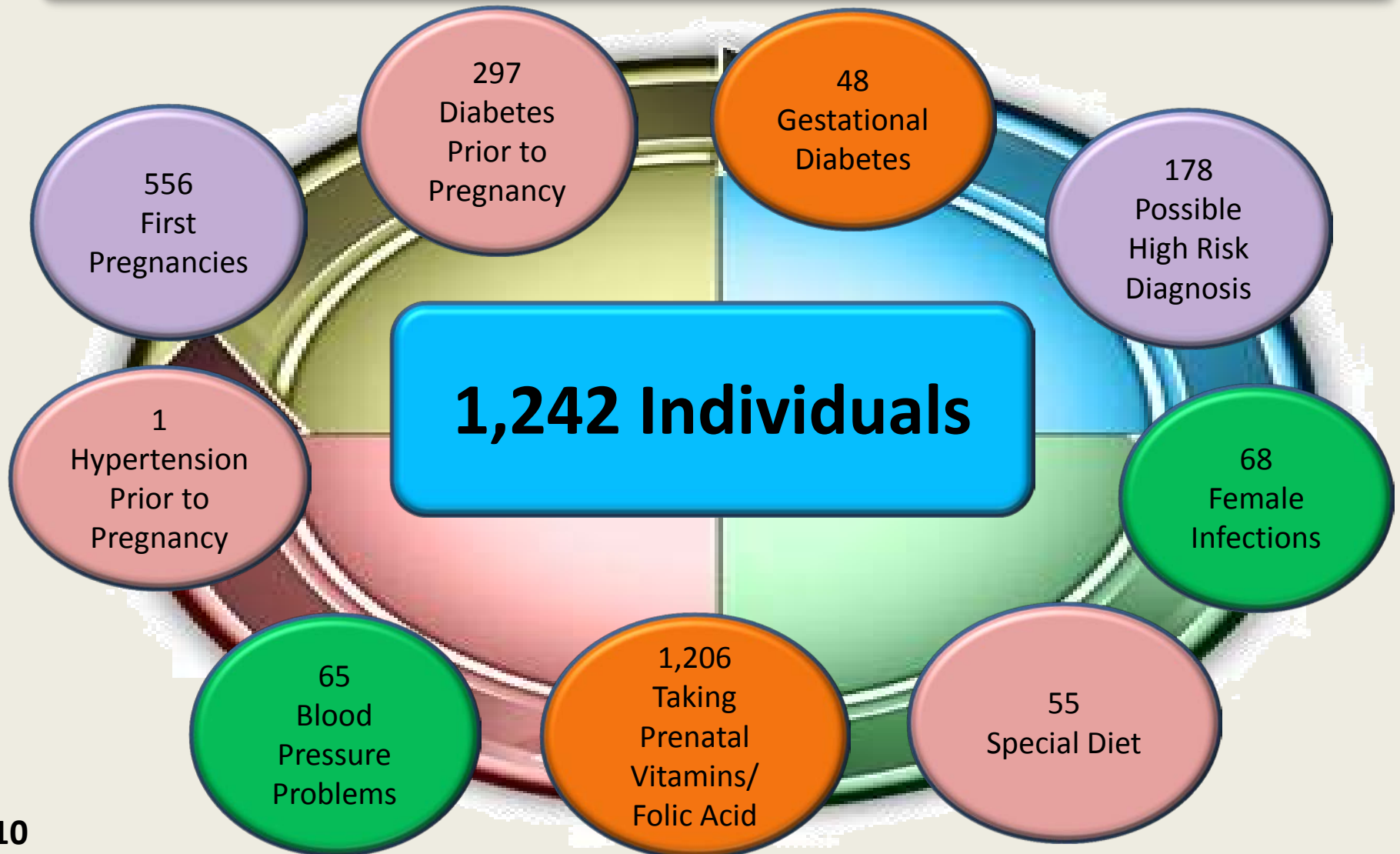
- ✓ Explanation of benefits
- ✓ Compliance with prescribed medical regimen
- ✓ Encourage member/provider communication
- ✓ Education about pregnancy related issues

Fetal & Infant Mortality Reduction Mom Cases

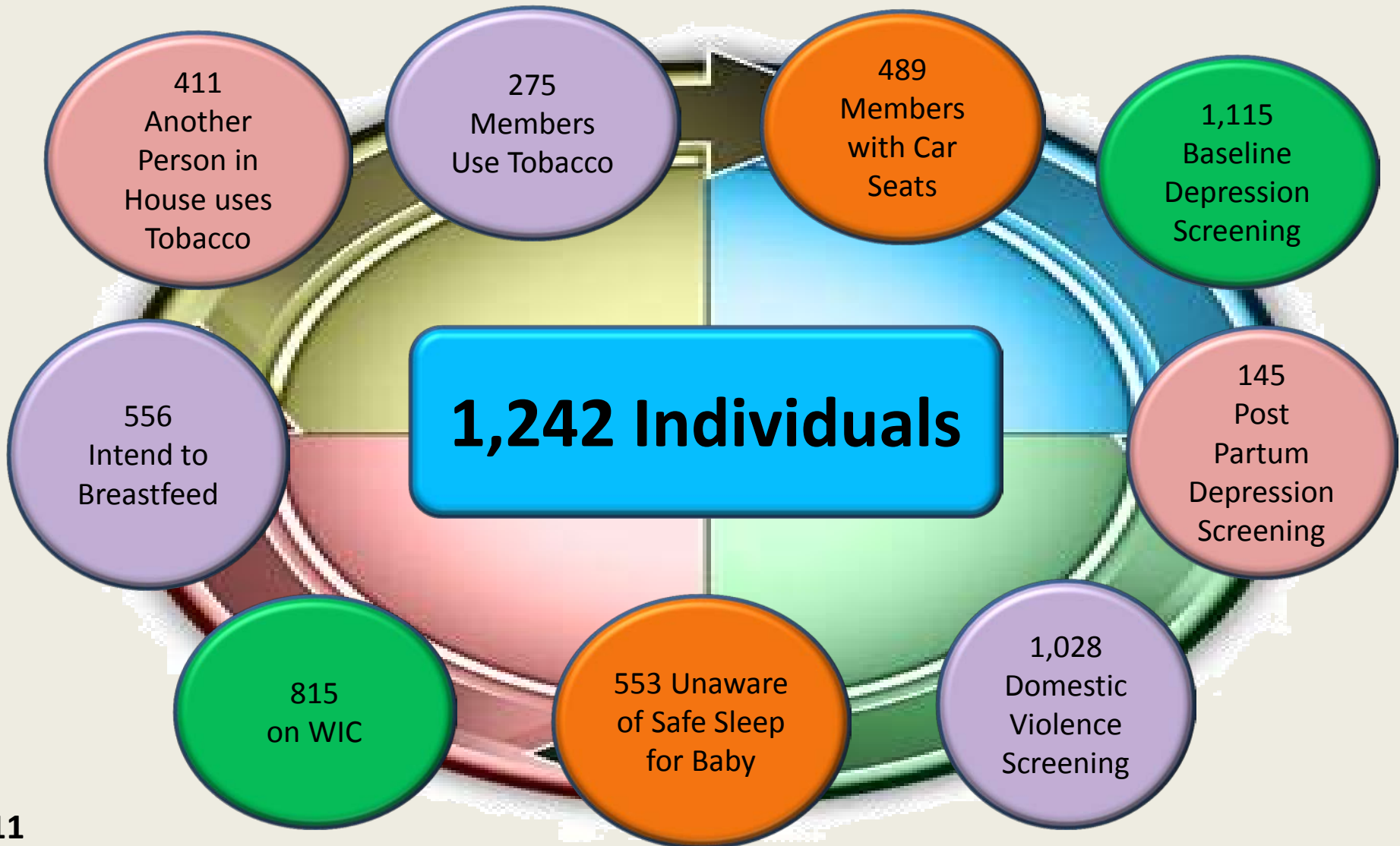
March 25, 2011 through August 10, 2012



Self-Reported Medical Conditions



Self-Reported Social Conditions



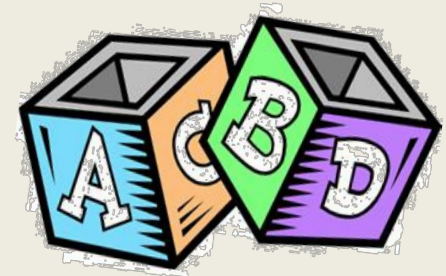
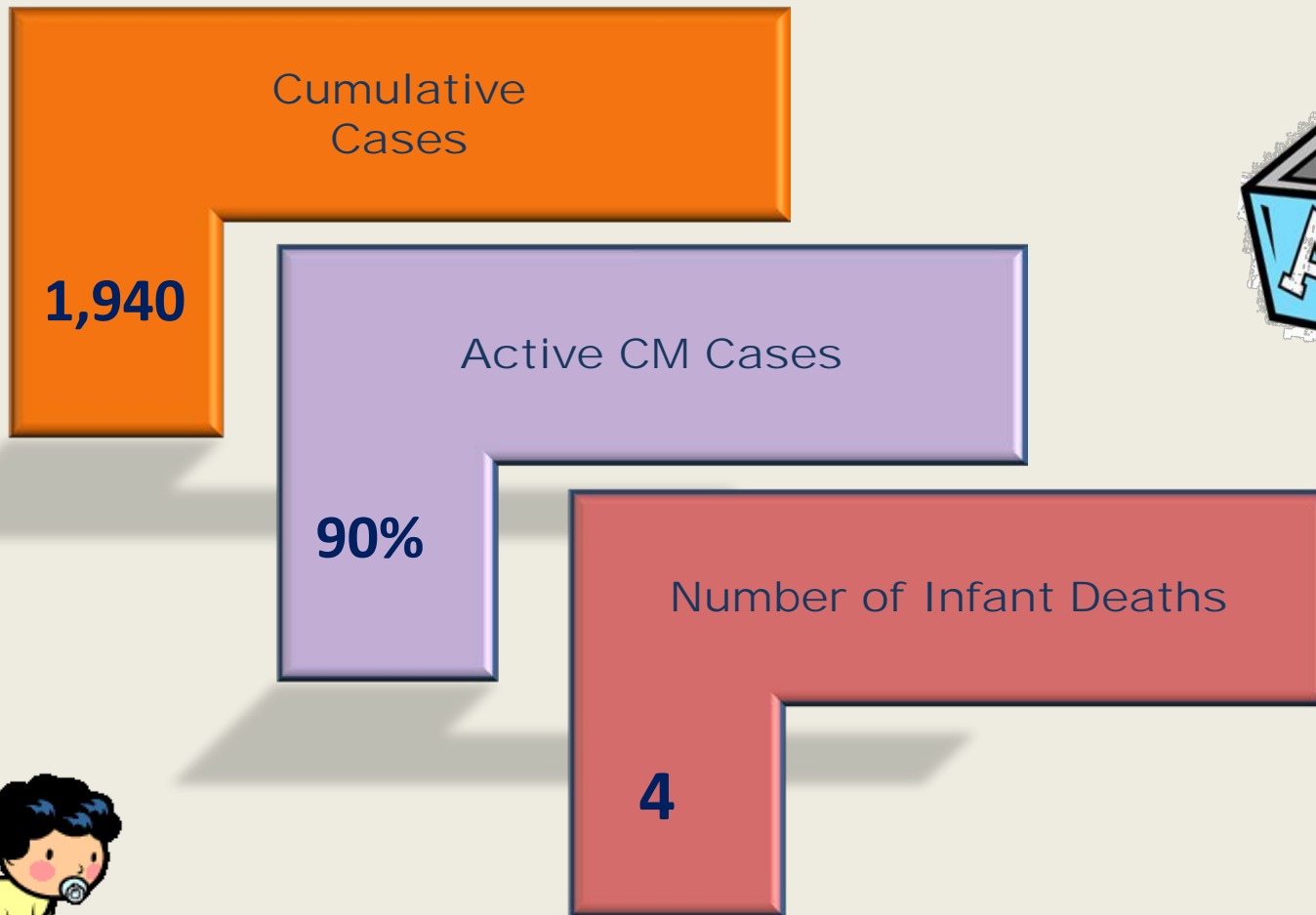
Postpartum Activities

- Each baby goes into active Care Management through 1st birthday
- Education is completed with mom
- Ensure enrollment on SoonerCare
- Tobacco usage in the home
- Safe sleep & safety in the home
- Immunizations & well child appointments
- Referrals as indicated (i.e. SoonerStart, DDSD)



Fetal & Infant Mortality Reduction Baby Cases

August 22, 2011 through August 10, 2012



Oklahoma Health Care Authority

Here When It Counts

Board Retreat 2012

www.okhca.org



Other Targeted Outreaches

- Private Duty Nursing
- Medically Fragile Waiver
- TEFRA
- Hemophilia
- Sickle Cell Anemia
- Synagis



Social Service Coordination

Social Service Coordinators assist with community-based resources and other identified needs based on Abraham Maslow's hierarchy of needs



Out of State Coordination of Care



Review & negotiate out-of-state care when comparable in-state services are not available

In Summation . . .

“The family is both the fundamental unit of society as well as the root of culture. It ... is a perpetual source of encouragement, advocacy, assurance, and emotional refueling that empowers a child to venture with confidence into the greater world and to become all that he can be.”

Marianne E. Neifert



Contact Information

**Marlene Asmussen, RN
Care Management Director**

**Rebekah Gossett, RN
Care Management Supervisor**

1-877-252-6002



References

- Neifert, Marianne. Dr. Mom's Parenting Guide. 2012. http://www.notable-quotes.com/f/family_quotes.html.
- Oklahoma State Department of Health. 2012. <http://www.osdh.gov>