



Crime in Oklahoma, 2020

Selected Findings, Law Enforcement Officers Killed or Assaulted

September 1, 2021

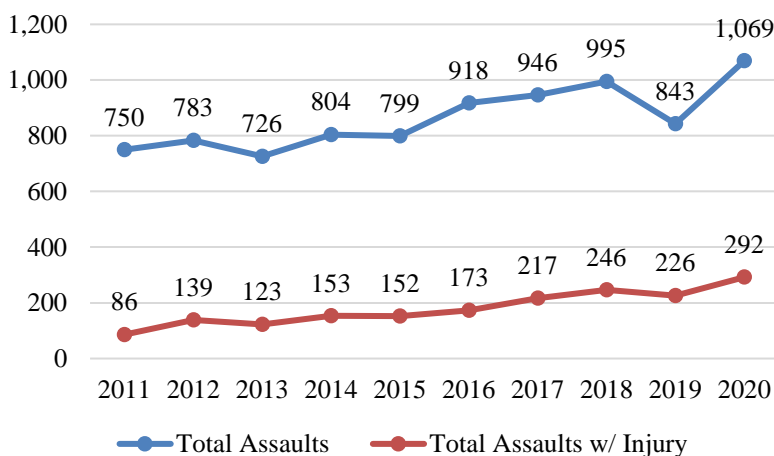
The Oklahoma Uniform Crime Reporting Program collects data on law enforcement officers killed or assaulted in the line of duty.

According to reporting guidelines, assault on a law enforcement officer includes “any assault or death that occurred while the officer was working in an official capacity (on or off-duty), had full arrest powers, was wearing or carrying a badge and firearm, and was being paid from public funds.”

In 2020, one officer was killed as a result of a felonious act, and zero officers were killed as a result of negligence excluding motor vehicle collisions or accidents.

There were 1,069 officers assaulted in 2020, which is a 26.8% increase from the 843 officers assaulted in 2019. From 2011-2020, 2020 had the largest increase in officer assaults. Of the 1,069 officers assaulted, 72.7% reported no injuries and 27.3% reported injuries (Figure 1).

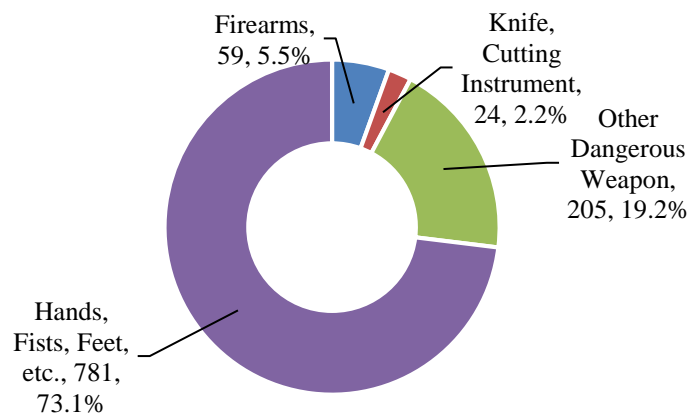
Figure 1. Total Assaults and Total Assaults with an Injury, 2011-2020



Personal Weapons (Hands, Fists, Feet, etc.) was the most commonly (73.1%) used weapon in Officer Assaults.

Other weapons used in an Officer Assaults included Other Dangerous Weapon (19.2%), Firearms (5.5%), and Knife, Cutting Instrument (2.2%).

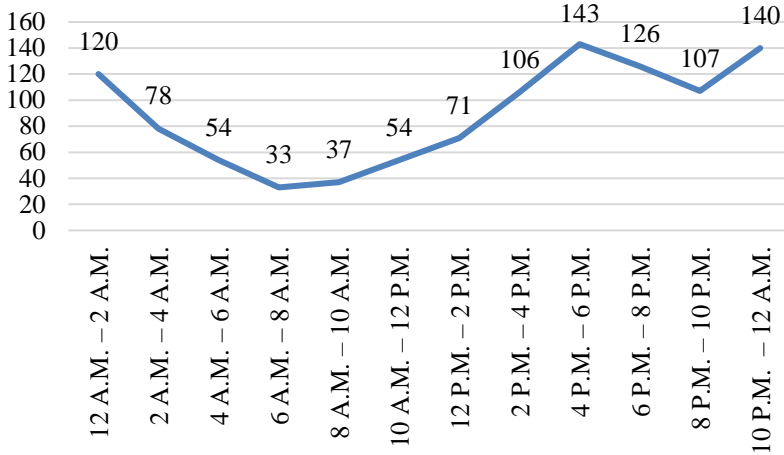
Figure 2. Officer Assaults, by Weapon Type



4:00 P.M – 6:00 P.M had the highest number of Officer Assaults at 143 (Figure 3).

Most (69.4%) officer assaults occurred from 2:00 P.M through 2:00 A.M. While the remaining 30.6% occurred from 2:00 A.M through 2:00 P.M. The least common time an Officer Assault occurred was between 6:00 A.M. and 8:00 A.M.

Figure 3. Officer Assaults, by Time of Day



In 45.7% of Officer Assaults, the officer was assigned to a One Man Vehicle, Assisted.

One Man Vehicle, Alone assignments accounted for 27.6% of Officer Assaults, and Other, Assisted accounted for 15.9%. Of all Officer Assaults, only 4.7% of officers were in a Two Man Vehicle Assignment. The remaining Officer Assaults occurred during Other, Alone (4.3%), Detective, Assisted (0.9%), and Detective, Alone (0.8%) assignments.

Table 1. Officer Assaults by Type of Assignment

Type of Assignment	Alone / Assisted	Number Assaulted	% of Total
Two Man Vehicle		50	4.7
One Man Vehicle	Alone	295	27.6
	Assisted	489	45.7
Detective	Alone	9	0.8
	Assisted	10	0.9
Other	Alone	46	4.3
	Assisted	170	15.9
Total		1,069	100.0

The most common (22.6%) circumstance leading to an assault was a Disturbance Call and the second most common circumstance was Handling, Transporting Prisoner at 21.0% (Table 2).

The least common (0.07%) circumstance leading to an assault was a Civil Disorder.

Table 2. Officer Assaults, by Type of Assignment

Circumstance	Number Assaulted	% of Total
Disturbance Call	242	22.6
Handling, Transporting Prisoner	225	21.0
All Other	198	18.5
Attempting Other Arrest	120	11.2
Traffic Pursuits and Stops	108	10.1
Investigating Suspicious Person or Circumstances	83	7.8
Mentally Deranged	44	4.1
Burglary in Progress	20	1.9
Robbery in Progress	11	1.0
Ambush - No Warning	10	0.9
Civil Disorder	8	0.7
Total	1,069	100.0